



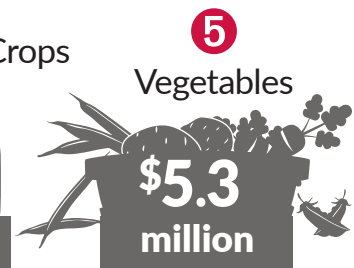
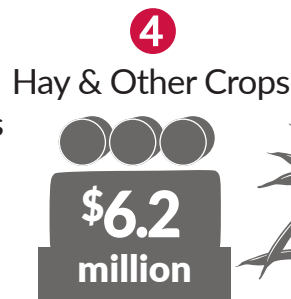
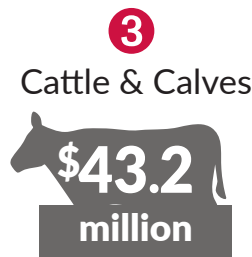
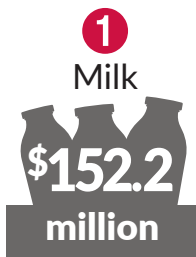
AGRICULTURE WORKS HARD FOR

▶ DODGE COUNTY

Family-owned farms, food processors and agriculture-related businesses generate thousands of jobs and millions of dollars of economic activity for Dodge County, while contributing to local income and tax revenues.

Agriculture's annual impact:

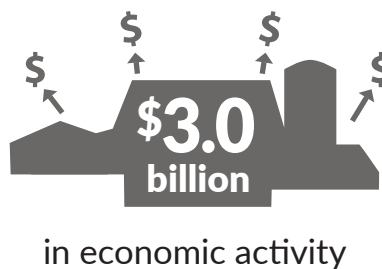
WHAT DO OUR FARMS PRODUCE?



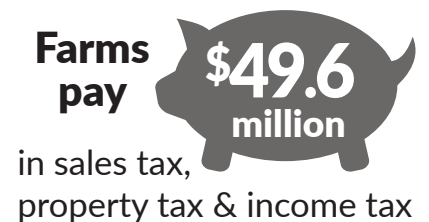
HOW MANY PEOPLE DOES AGRICULTURE EMPLOY?



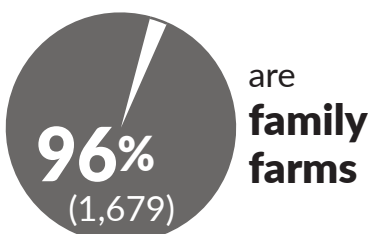
WHAT IS THE ECONOMIC IMPACT?



HOW MUCH TAX DOES AGRICULTURE CONTRIBUTE?



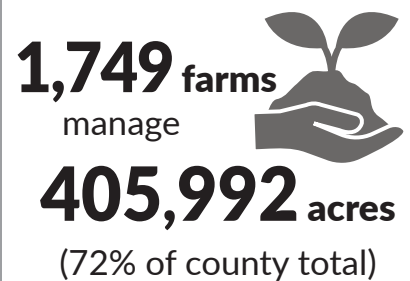
WHO OWNS THE FARMS?



HOW MUCH IS SOLD LOCALLY?



WHO TAKES CARE OF THE LAND?



THE AGRICULTURE SECTOR BENEFITS THE ENTIRE COUNTY

Agriculture is a diverse and vital part of Dodge County’s culture, communities, and economy. Dodge County is a statewide leader in the value of agricultural products sold in the state. While milk from cows and grains are the largest agricultural contributions to the local economy and tax base, Dodge County also ranks among the top ten in the state for cattle and swine. Fruits, vegetables, forages, sheep and goats are also significant. For many, sustainable agriculture is a priority - from reduced-till, no-till, and/or cover-crop land practices to green technologies such as manure digesters, wind turbines and ethanol production.

Did you know?

DODGE COUNTY IS
No. 3 in Wisconsin’s
grain industry



Extension
 UNIVERSITY OF WISCONSIN-MADISON

The University of Wisconsin–Madison Division of Extension is part of the local and statewide network of organizations and agencies that support Wisconsin’s \$104.8 billion agriculture industry. Extension helps enhance the economic impact of agriculture by providing research-based information that increases farm profitability, improves food safety, reduces environmental impacts and expands agribusiness networks.

**For more information,
 please contact:**

UW–Madison Extension Dodge County
 127 E. Oak Street
 Juneau, WI 53039

920-386-3790

dodge.extension.wisc.edu

Copyright © 2019 by the Board of Regents of the University of Wisconsin System doing business as the University of Wisconsin–Madison Division of Extension. All rights reserved. An EEO/AA employer, the University of Wisconsin–Madison Division of Extension provides equal opportunities in employment and programming, including Title VI, Title IX, and ADA requirements.

Support for this work was provided by UW–Madison Division of Extension, Dairy Farmers of Wisconsin and Wisconsin Department of Agriculture, Trade and Consumer Protection (DATCP). Economic data (2017) provided by: Steven C. Deller, Professor, Department of Agriculture and Applied Economics, UW–Madison and Community Development Specialist, UW–Madison Extension. Contribution of Agriculture to the Wisconsin Economy: Updated for 2017 is available at <https://go.wisc.edu/i6947n>. Additional data was from the USDA 2017 Census of Agriculture. Publication production was completed through a collaboration of the Extension Natural Resources Institute and the Extension Office of Communications and Stakeholder Engagement.

Produced in cooperation with Dairy Farmers of Wisconsin, Wisconsin Department of Agriculture, Trade and Consumer Protection and Wisconsin Farm Bureau.

