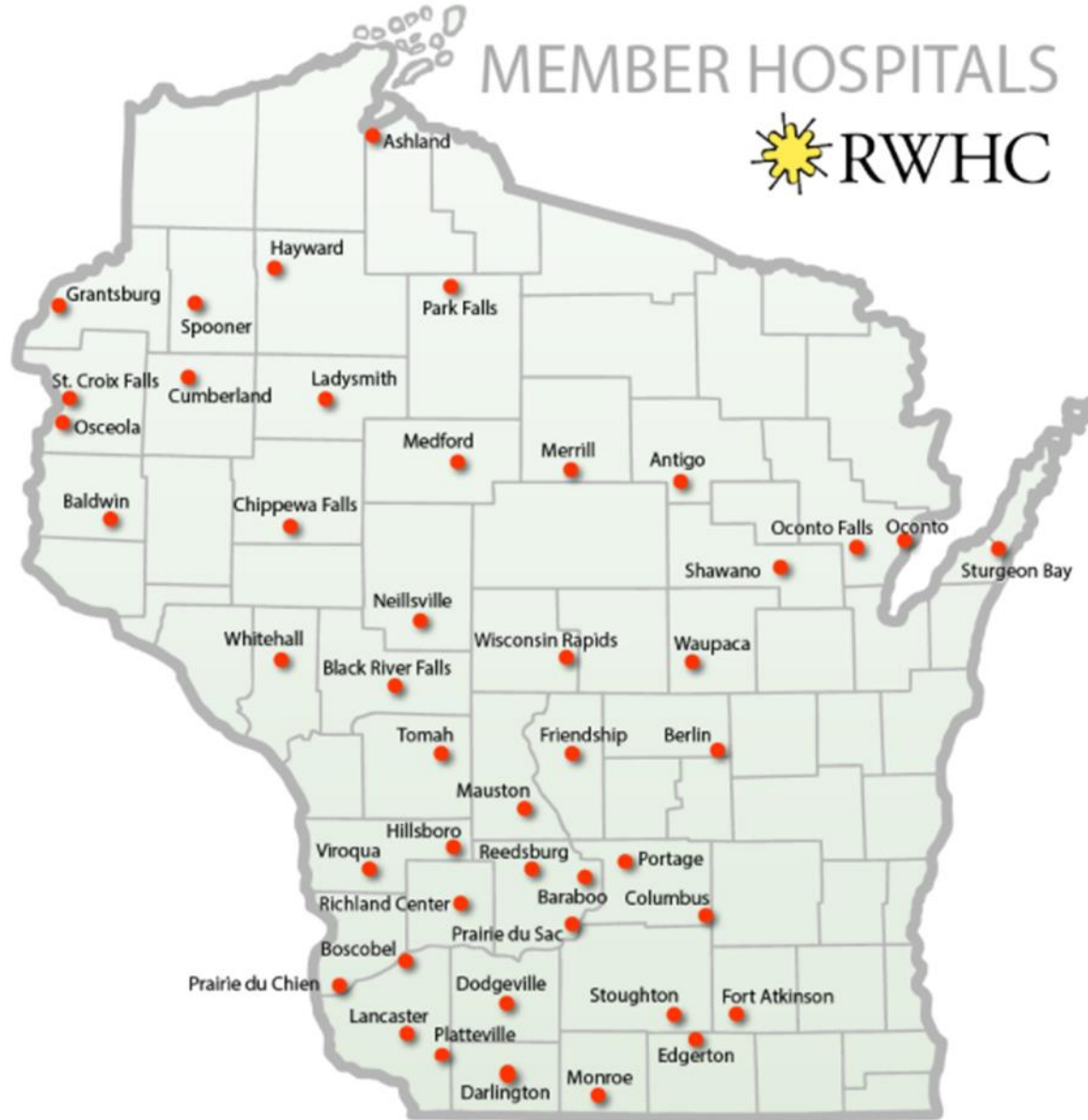


**RWHC  
COMMUNITY  
ECONOMIC  
DEVELOPMENT**



# MEMBER HOSPITALS



# STATE — OF THE — STATE

# of Healthcare





WISCONSIN HEALTH NEWS

# WISCONSIN LARGELY AVOIDS RURAL HOSPITAL CLOSURES, BUT FACES CHALLENGES

Feb 13, 2020 | Hospitals, Top Stories |



Wisconsin News

Stacker Studio

## Wisconsin is the #3 state with the fewest rural hospital closures since 2005

WRITTEN BY:

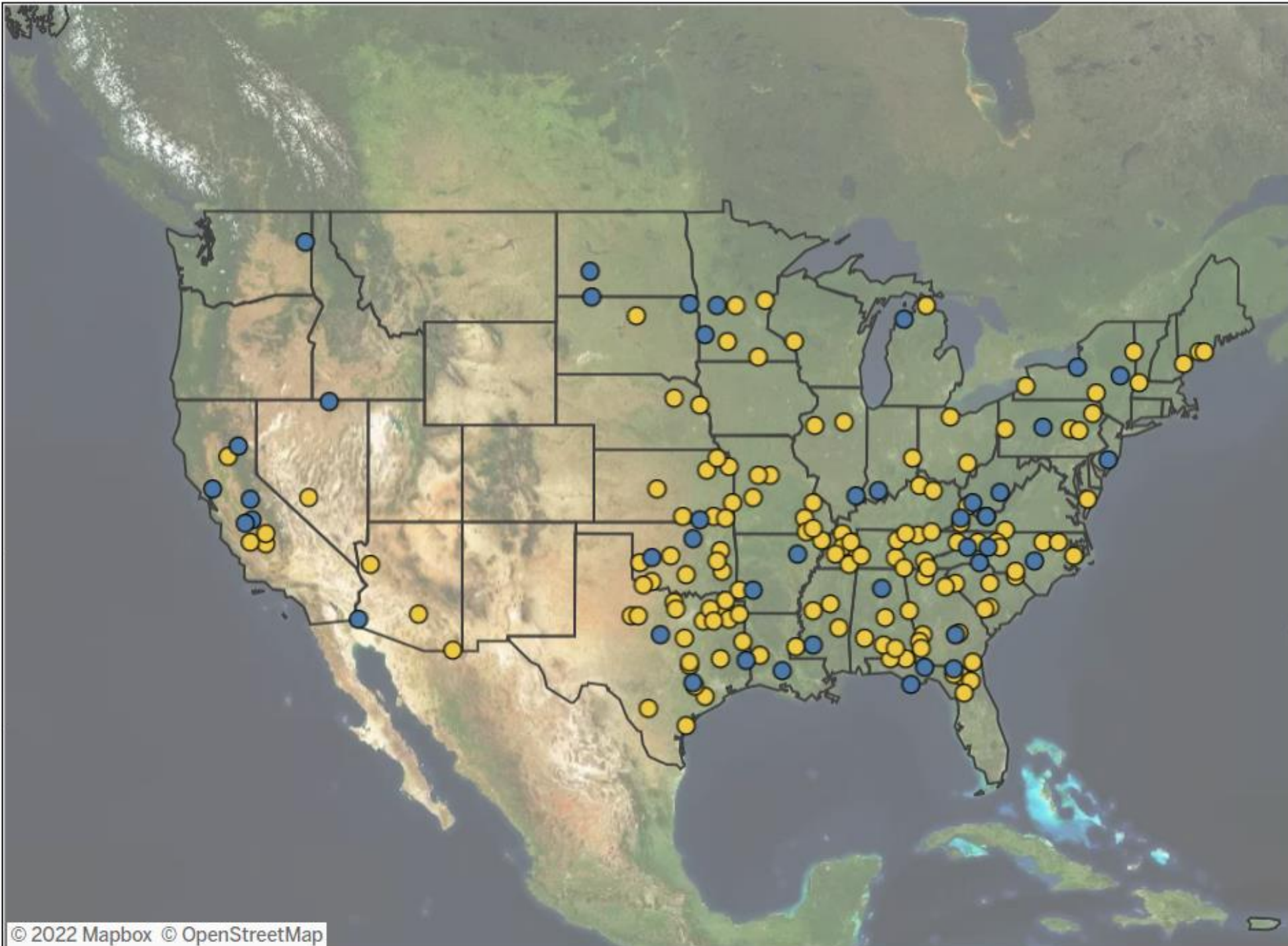
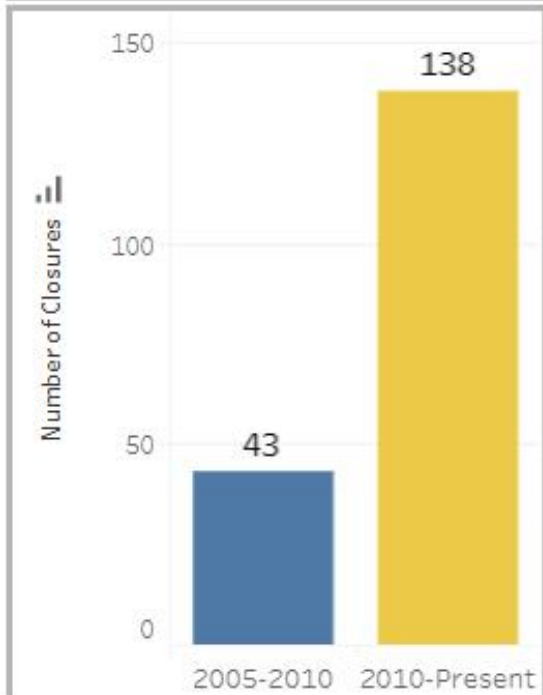
Stacker

December 9, 2021



## Closure Era

2005-2010 2010-Present



# Stability of the Rural Health Safety Net

## Region View



### WEST



#### Vulnerability Creeps Across Region

- 396 rural hospitals
- 10 closed
- 30 vulnerable
- 1.5% median OM
- 42% negative OM

### SOUTH



#### Epicenter of closures and vulnerability

- 777 rural hospitals
- 89 closed
- 269 vulnerable
- 0.4% median OM
- 47% negative OM

### MIDWEST



#### Vulnerability May Foreshadow Closures

- ★ • 832 rural hospitals
- 26 closed
- 137 vulnerable
- ★ • 1.7% median OM
- ★ • 39% negative OM

### NORTHEAST



#### Larger states not immune

- 156 rural hospitals
- 10 closed
- 17 vulnerable
- 0.5% median OM
- 46% negative OM



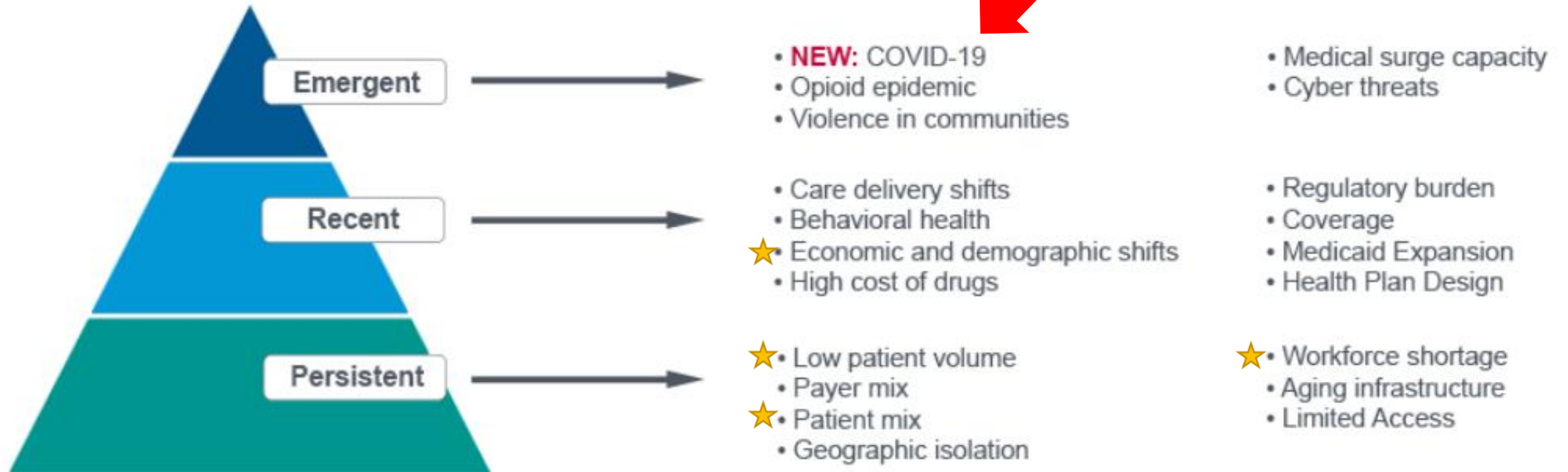
## Top 100 Rural & Community Hospitals for 2022

SSM Health St Clare Hospital	Baraboo	WI
Fort Memorial Hospital	Fort Atkinson	WI
Monroe Clinic Hospital	Monroe	WI
Sauk Prairie Memorial Hospital	Prairie Du Sac	WI
Aurora Medical Center in Manitowoc County	Two Rivers	WI

## Top 100 Critical Access Hospitals for 2022

Aspirus Langlade Hospital	Antigo	WI
★ Black River Memorial Hospital	Black River Falls	WI
Ascension Calumet Hospital	Chilton	WI
Mayo Clinic Hospital - Red Cedar in Menomonie	Menomonie	WI
Westfields Hospital & Clinic	New Richmond	WI
HSHS St Clare Memorial Hospital	Oconto Falls	WI
Door County Medical Center	Sturgeon Bay	WI
ThedaCare Medical Center - Waupaca	Waupaca	WI





Source: American Hospital Association

# What did the COVID-19 pandemic teach us about rural healthcare?

Division over Public Health Practices

Innovative Care Delivery + Community Collaborations

Financial Vulnerability

Workforce Shortages

HOSPITALS

# Nearly half of rural hospitals face negative operating margins as COVID-19 hits outpatient revenue

By Robert King • Feb 10, 2021 06:40pm

coronavirus

COVID-19

Finance

Hospital Impact



This year, 46% of rural hospitals are in the red and more than 450 could possibly close, a new study from Chartis said.



KHN

# Bounties and Bonuses Leave Small Hospitals Behind in Staffing Wars

REPUBLIC THIS STORY

By Bram Sable-Smith  
FEBRUARY 7, 2022



MORNING IN AMERICA

## Rural hospitals seeing staff shortages amid omicron surge



Kelsey Kernstine, Cassie Buchman

16,000 RNs  
short by 2035

## The Future of Wisconsin's Healthcare Workforce

### The Solutions:

- Expanded + modified education and training
- Expanded financial support for GME + APPs
- Implement clinical training best practices
- Incorporate telemedicine into training
- Explore care delivery changes
- Better data for continued analysis + planning!



Why does your hospital  
matter to your rural  
economy?







# ECONOMIC IMPACT



## A Critical Access Hospital...

- Increases local retail sales by 28% compared to towns without a CAH
- Increases total number of retail establishments as well as the number of small and micro businesses
- Can contribute between \$20k and \$1.3m per year to the local economy via telemedicine services, with the average CAH contributing \$522k
- Generates an average of \$1.8m in taxable local retail sales
- Creates .34 jobs in local businesses for every 1 job within the hospital
- Supports \$2.30 of local business activity with every \$1 they spend in the community
- Generates 170 jobs, \$7.1m in salaries, wages and benefits



# Rural Hospital Closure

- Reduces local income by \$703/person or 4%
- Increase unemployment rate by 1.6%
- Increase in poverty levels + unemployment levels
- Median rent values decrease
- Management, business and science occupations decreased by 1.63%
- Construction, information, sales, finance + professional occupations also significantly decreased
- Reduces employment by an average of 99 full and part time positions, with a range from 26 to 188 positions
- Reduces wages, salaries and benefits by \$5.3m on average with a range from \$902k to \$9.5m





Figure 1C: Wisconsin Employment Growth Index  
Total Employment, Health Care and Hospitals

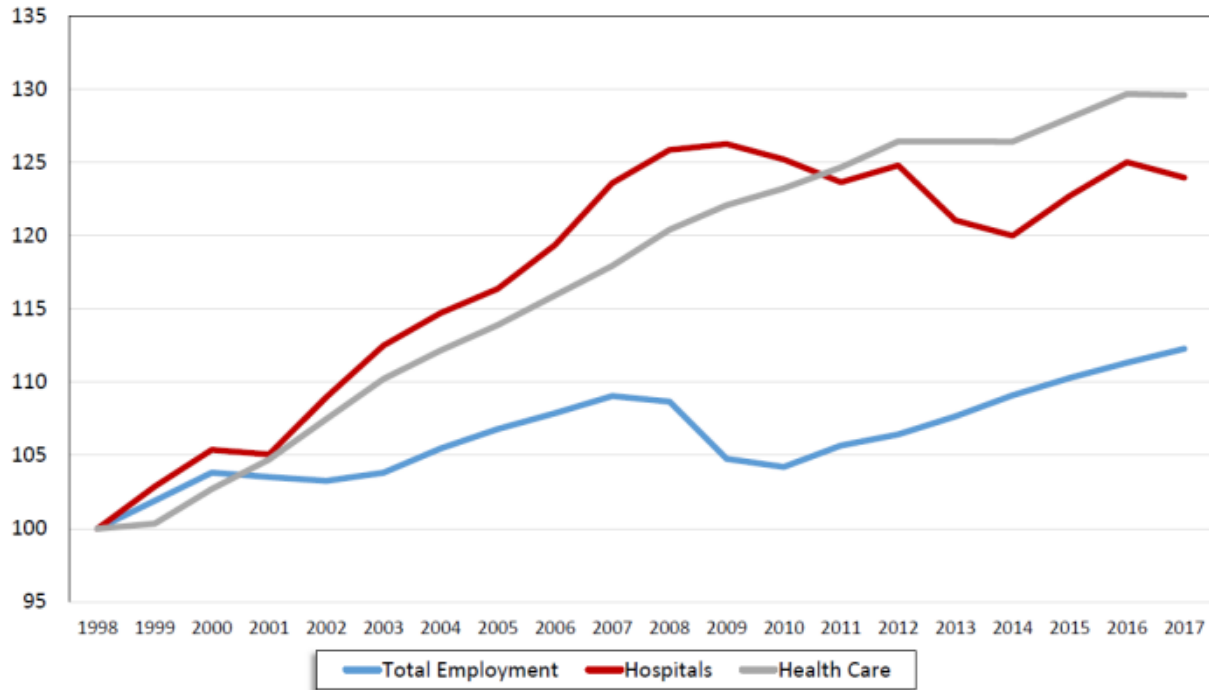
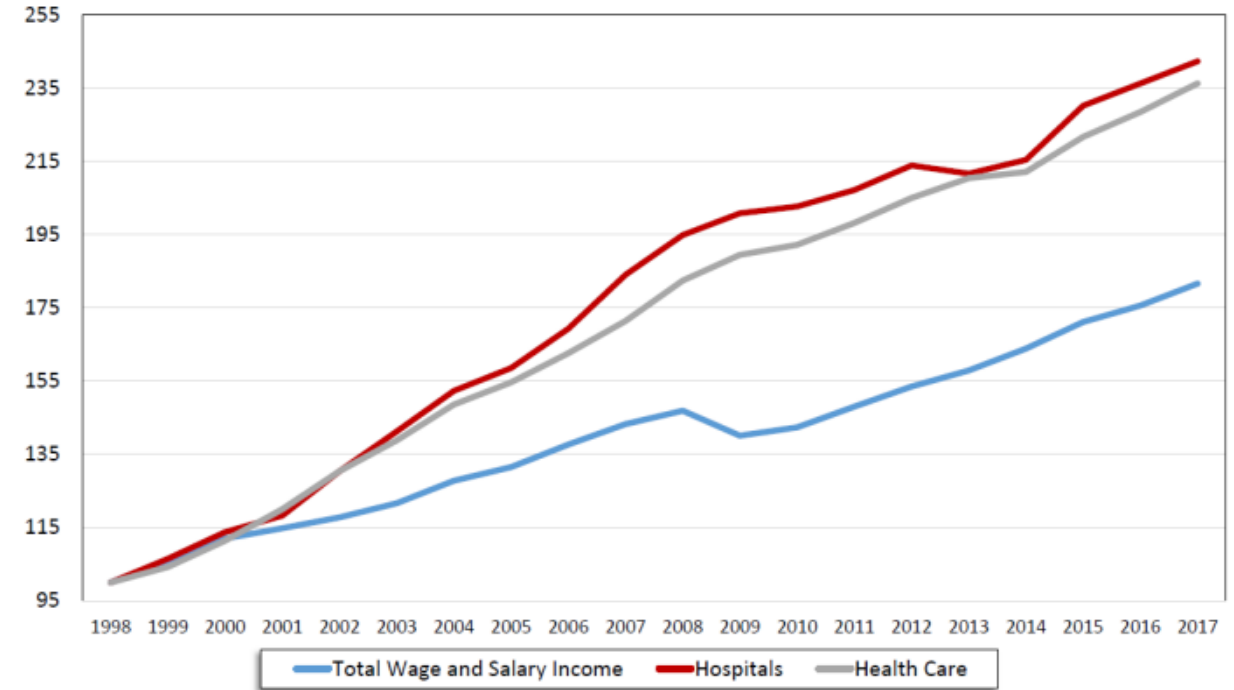


Figure 2C: Wisconsin Wage and Salary Income Growth Index  
Total Wage and Salary Income, Health Care and Hospitals



# Health Care Workers Have Consistently Higher Wages than the Average Worker in Lafayette County

Mean Wages - +\$17,750

Entry Wage - +\$220

Experienced Wage - +\$26,520

90th Percentile Wage - +\$45,200

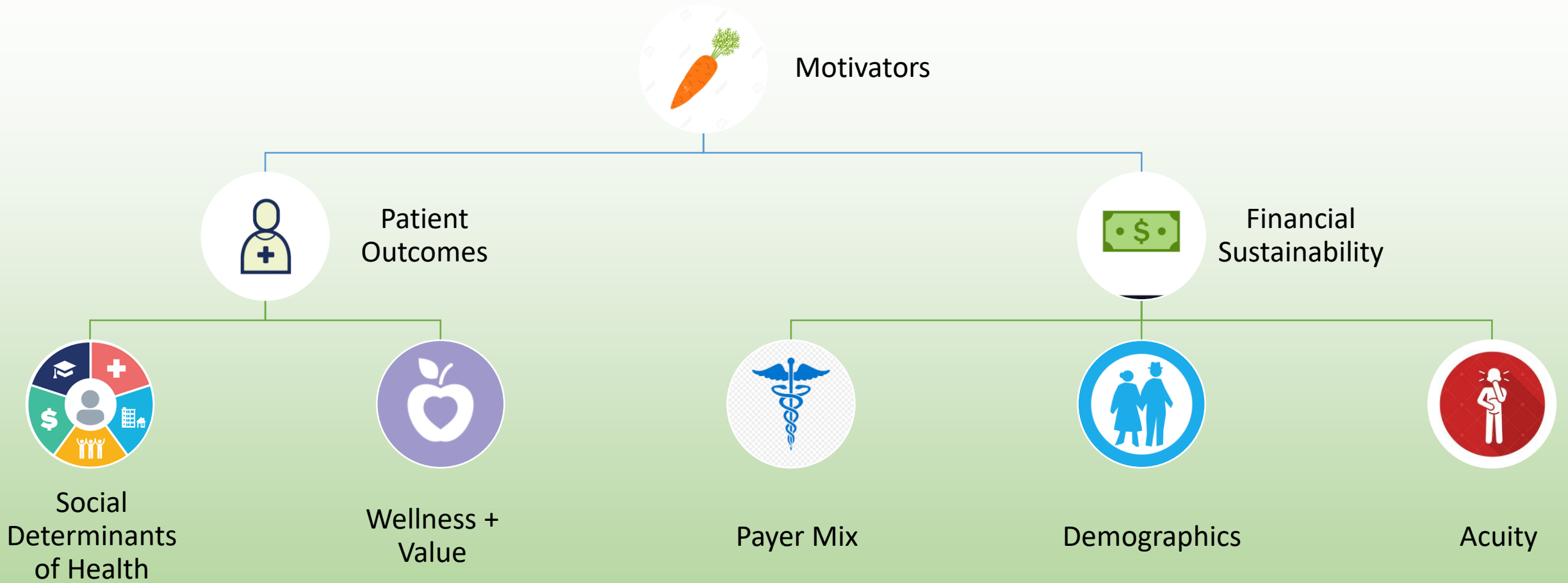


Data Source: Wisconsin Labor Market Information Data, 2019

How is rural economic growth/development linked to access to health care?



Rural healthcare providers can  
only be as economically viable as  
their rural communities



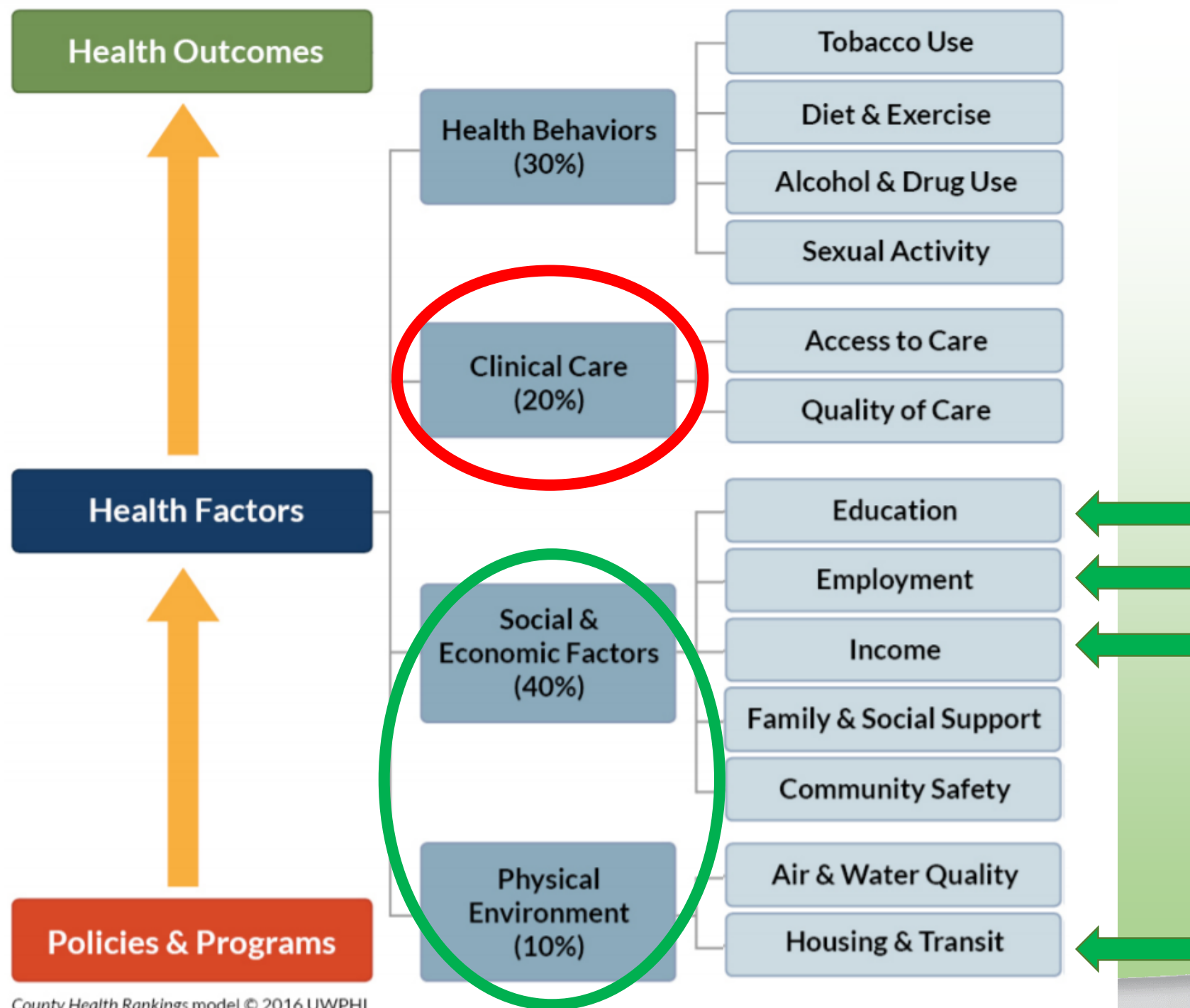
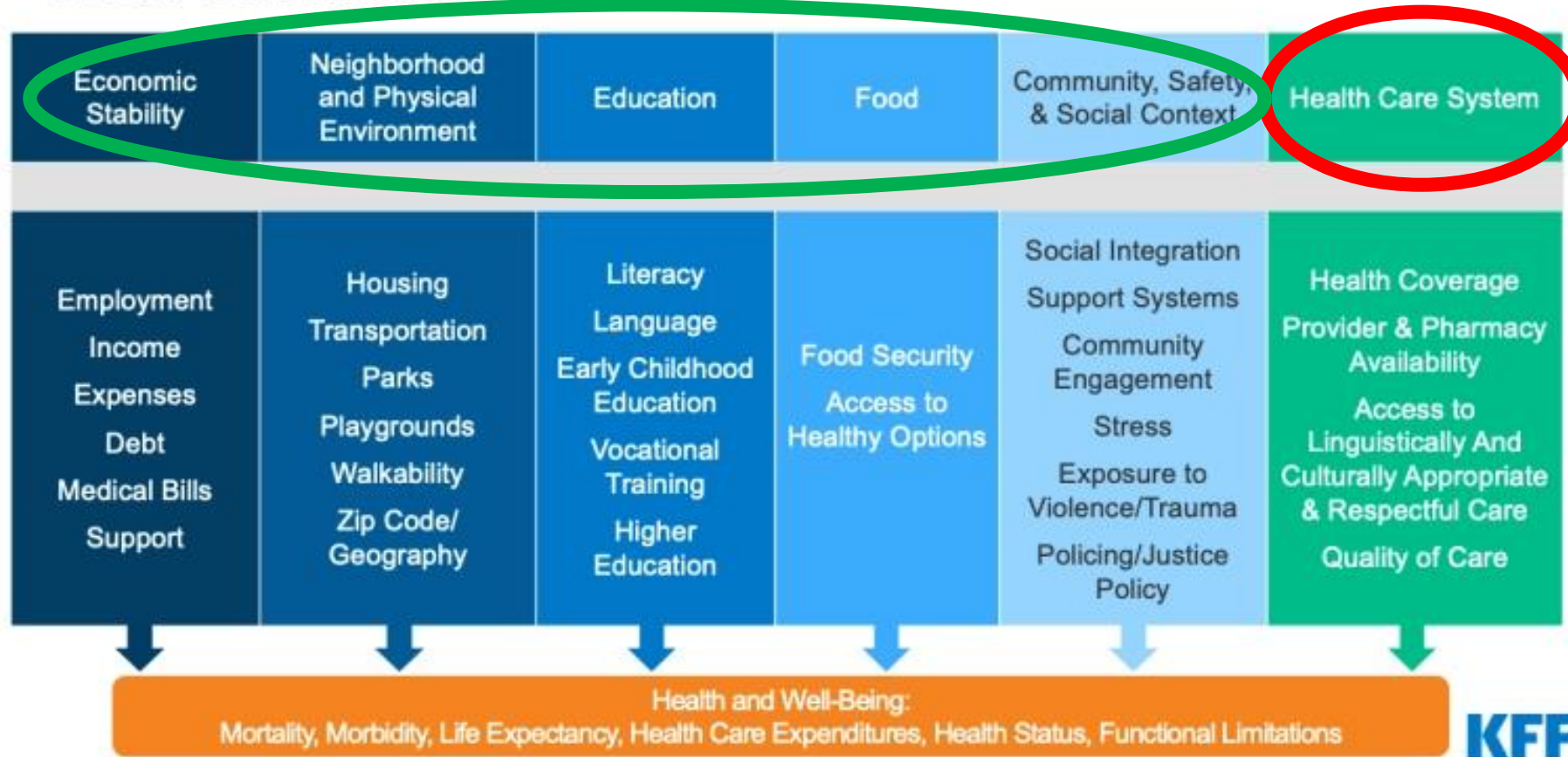


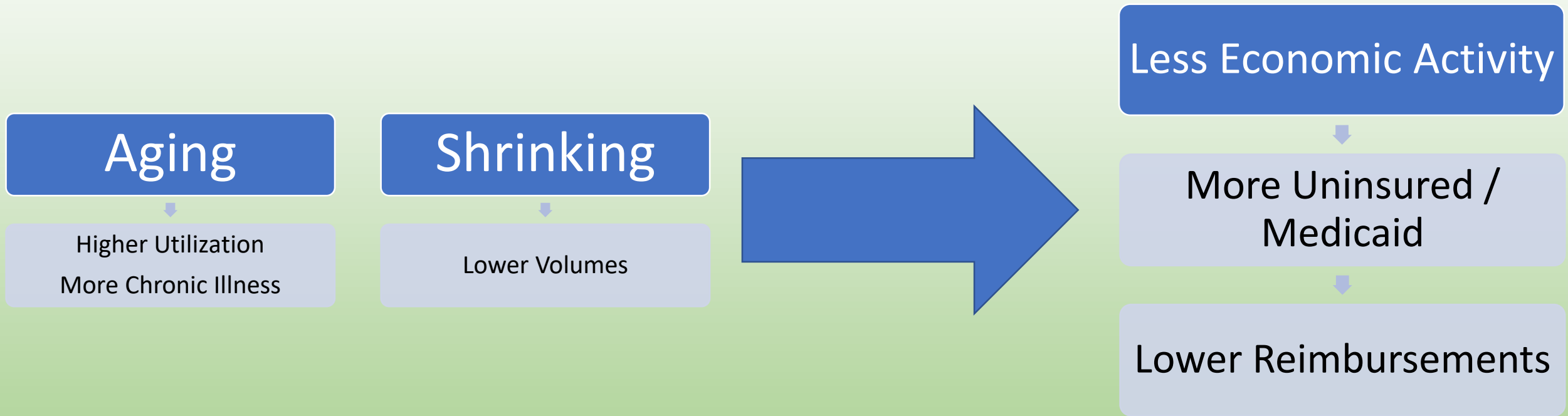


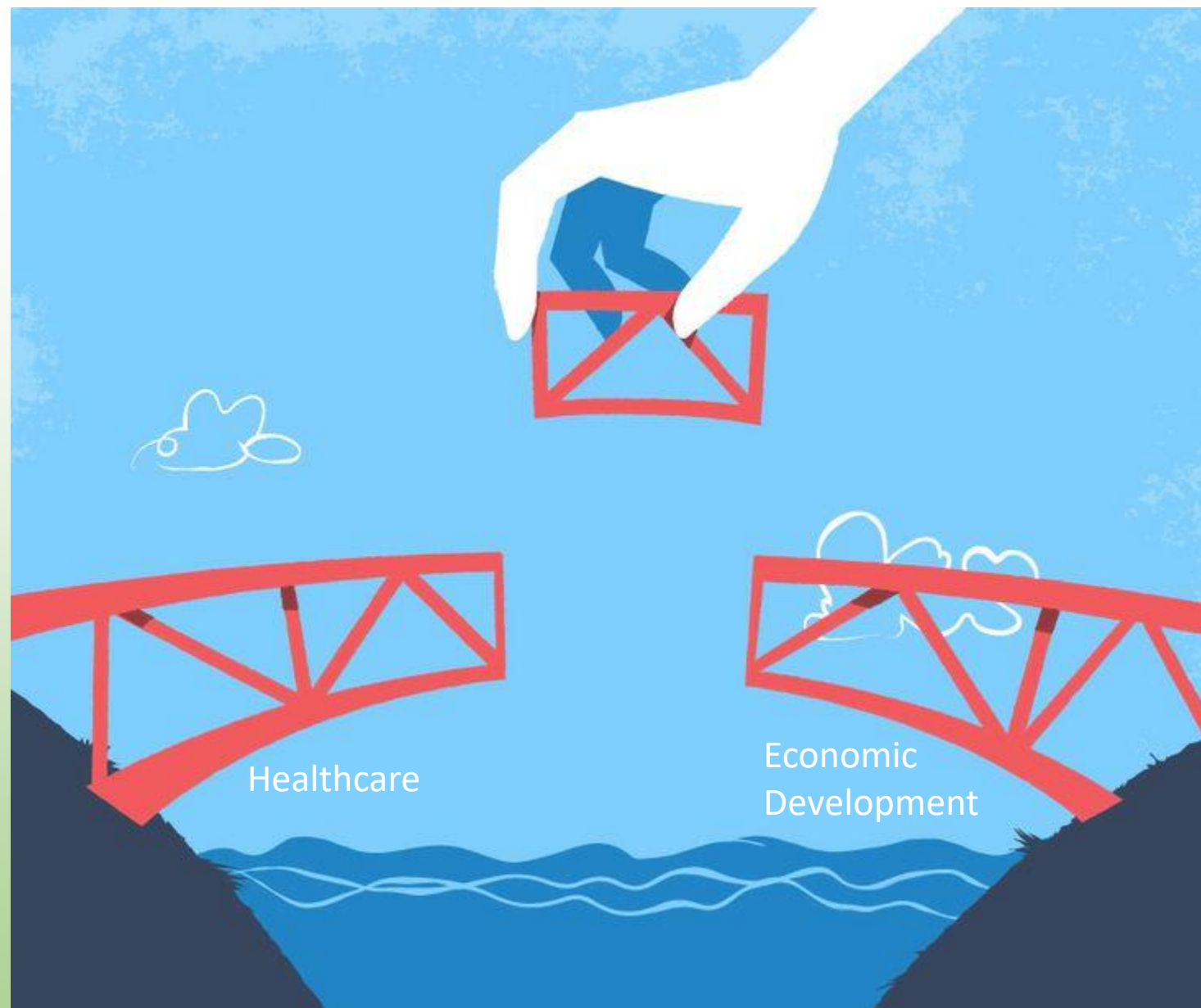
Figure 1

## Social Determinants of Health



# Wisconsin Demographics





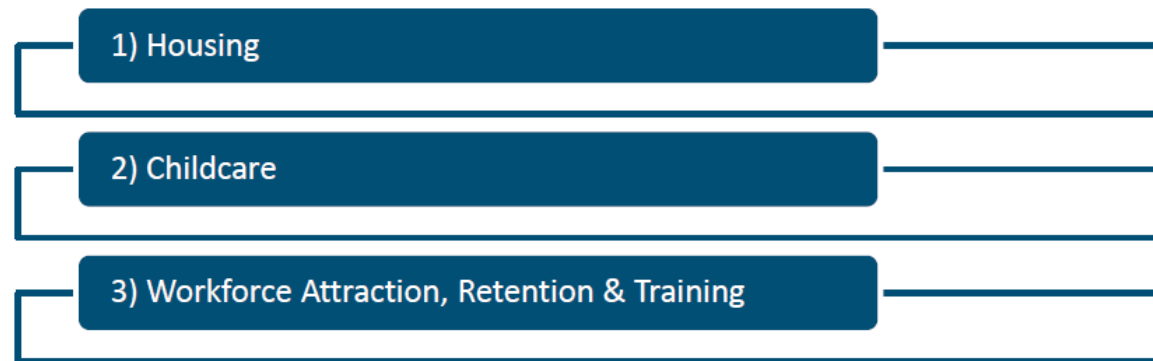


# Member Issues

## By Ranking



## By Frequency



# Contact Information

Marie Barry

Director of Community Economic Development

Rural Wisconsin Health Cooperative

[mbarry@RWHC.com](mailto:mbarry@RWHC.com)