



**Broadband, Equity, Access  
and Deployment**

**4.3.2023**

A serene landscape photograph of a calm lake at sunset. Two kayakers are visible on the water, their silhouettes highlighted against the golden light of the setting sun. The sky is a clear, deep blue, and the water reflects the warm colors of the sunset. In the background, dark silhouettes of hills or mountains are visible against the horizon. A white rectangular box is overlaid on the center of the image, containing text.

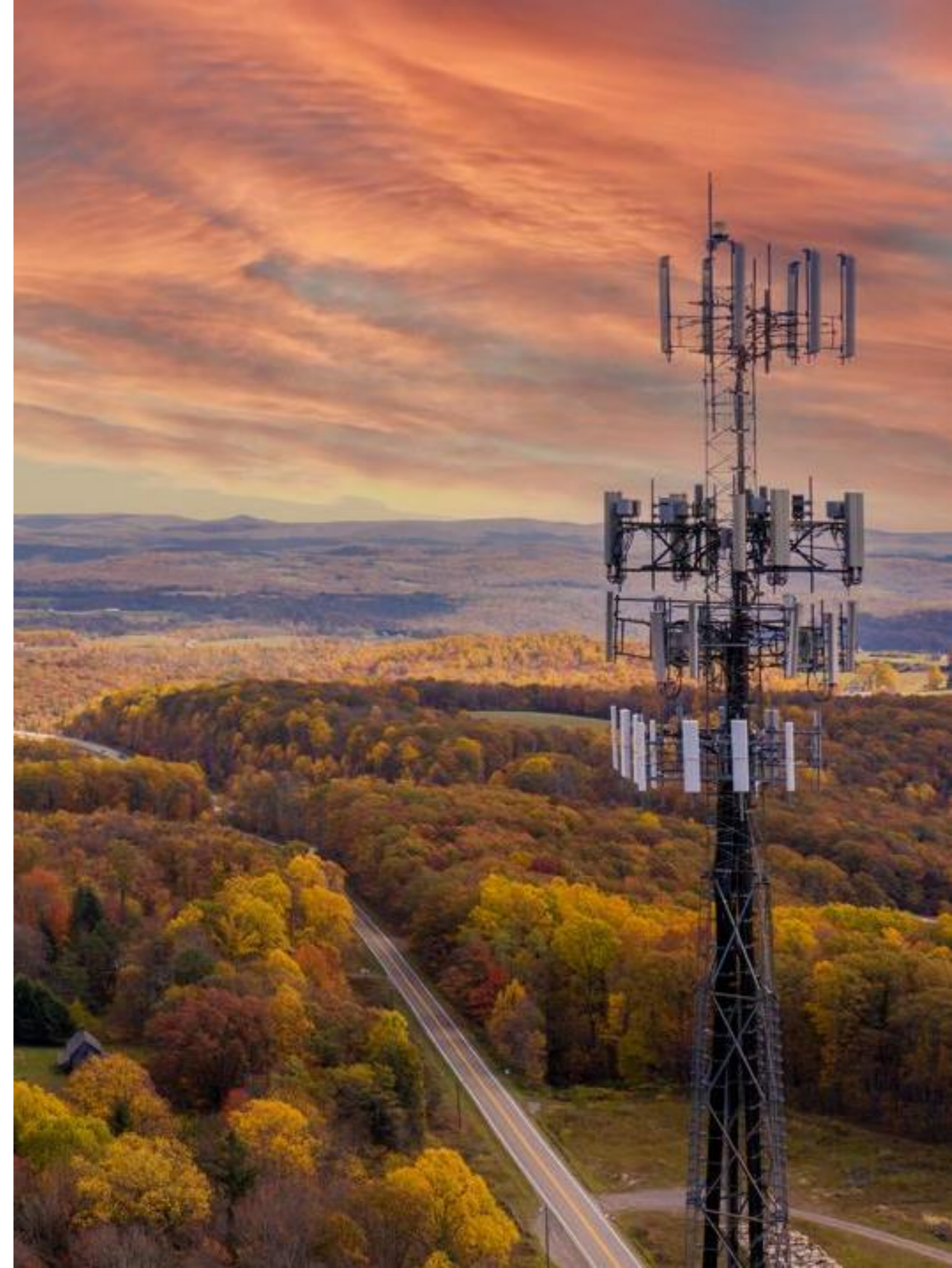
**The Office of Rural Prosperity seeks to foster vibrant, prosperous, and resilient rural communities across Wisconsin**



# Overview

## ➤ Office of Rural Prosperity deliverables

- GeoPartners speed testing contract
- Regional Technical Assistance
- Regional toolkit

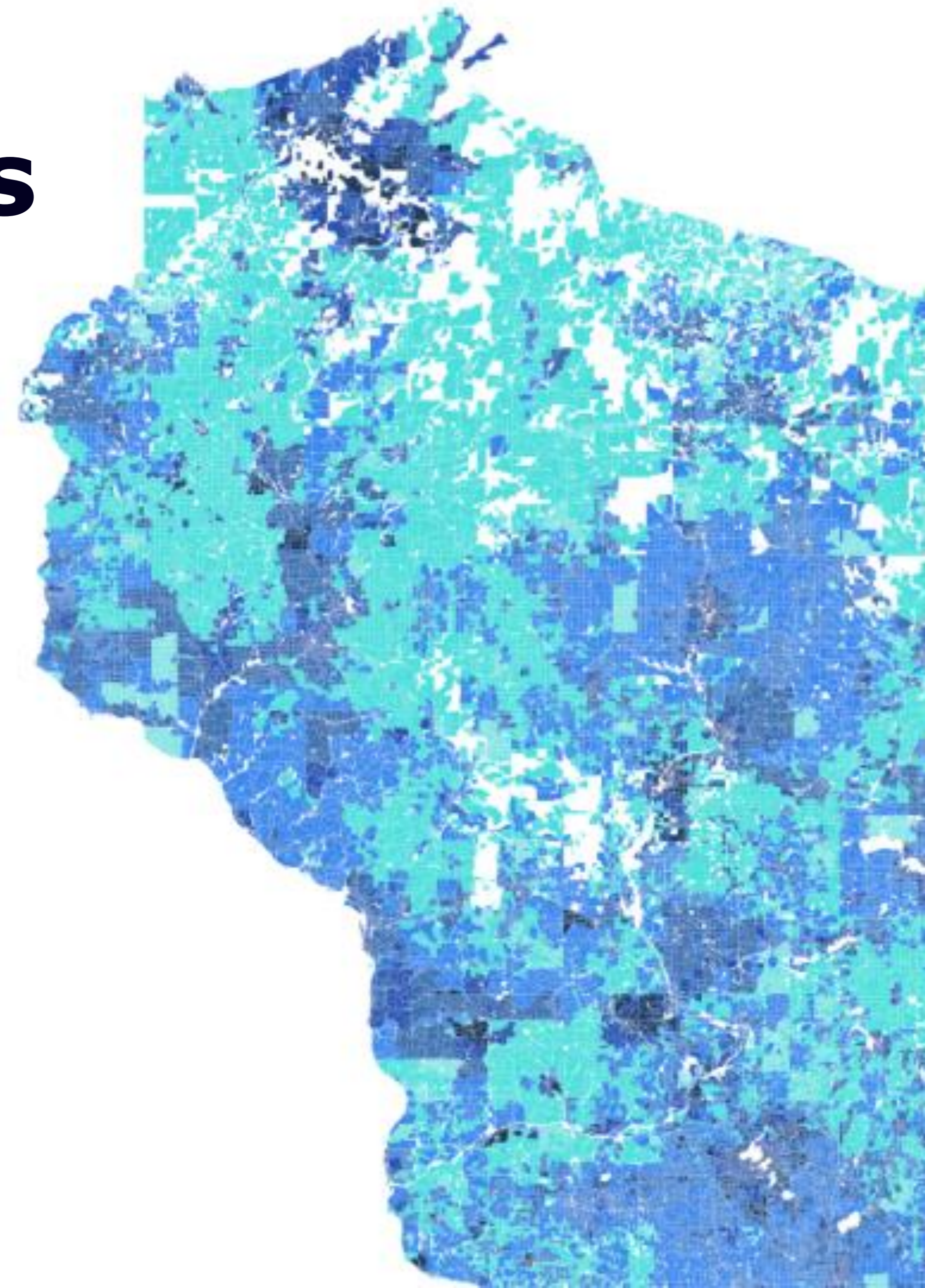




# WEDC ORP deliverables

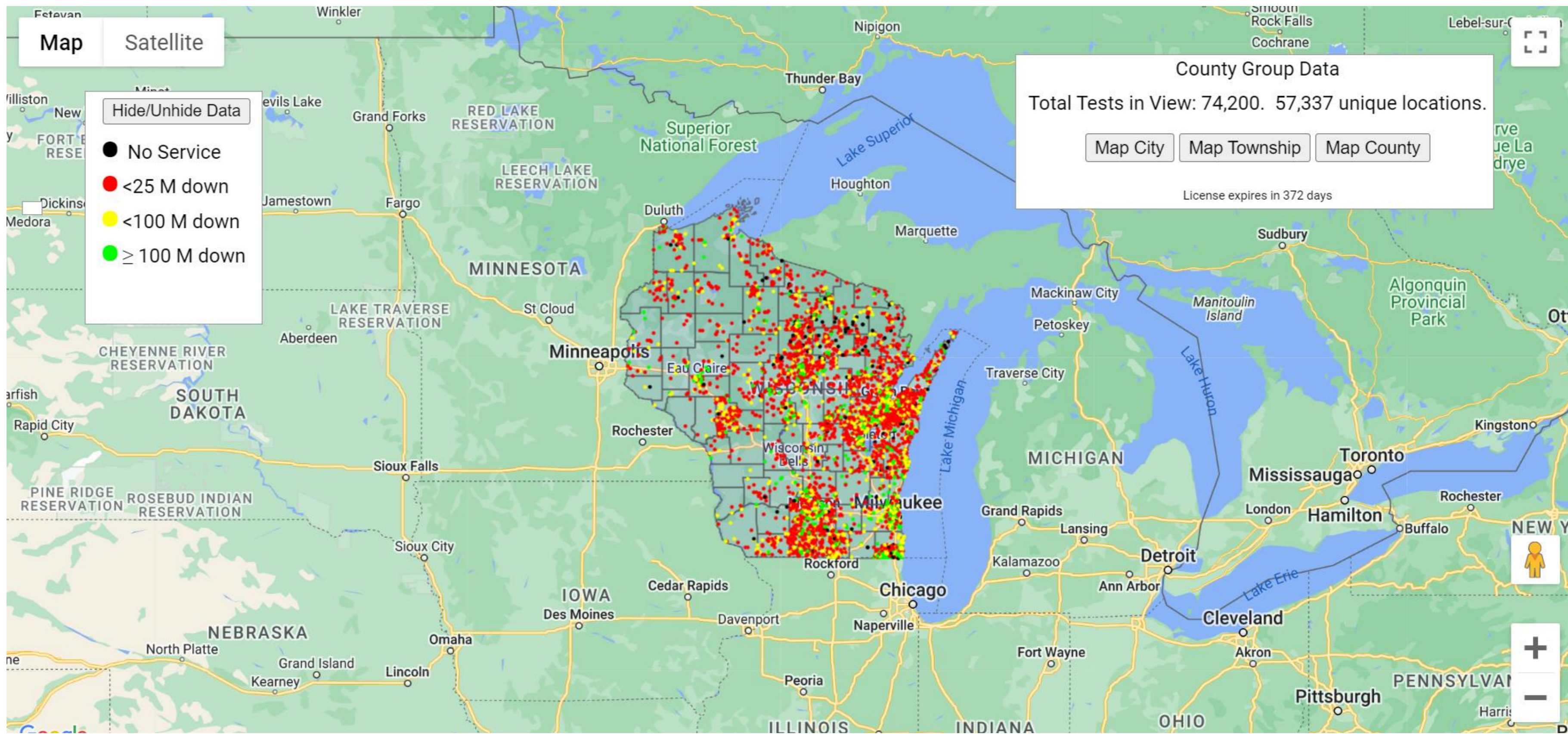
## ➤ GeoRegional Technical Assistance

- Contract has been executed with North Central Wisconsin Regional Planning Commission – contract extension to Spring 2024
- Mapping is live
- Reach out to NCWRPC – license agreement
- Holding page:  
<https://www.ncwrpc.org/ncwrpc2021/broadband-speed-test/>
- Map:  
<https://expressoptimizer.net/projects/Wisconsin/speedtestmap.php>



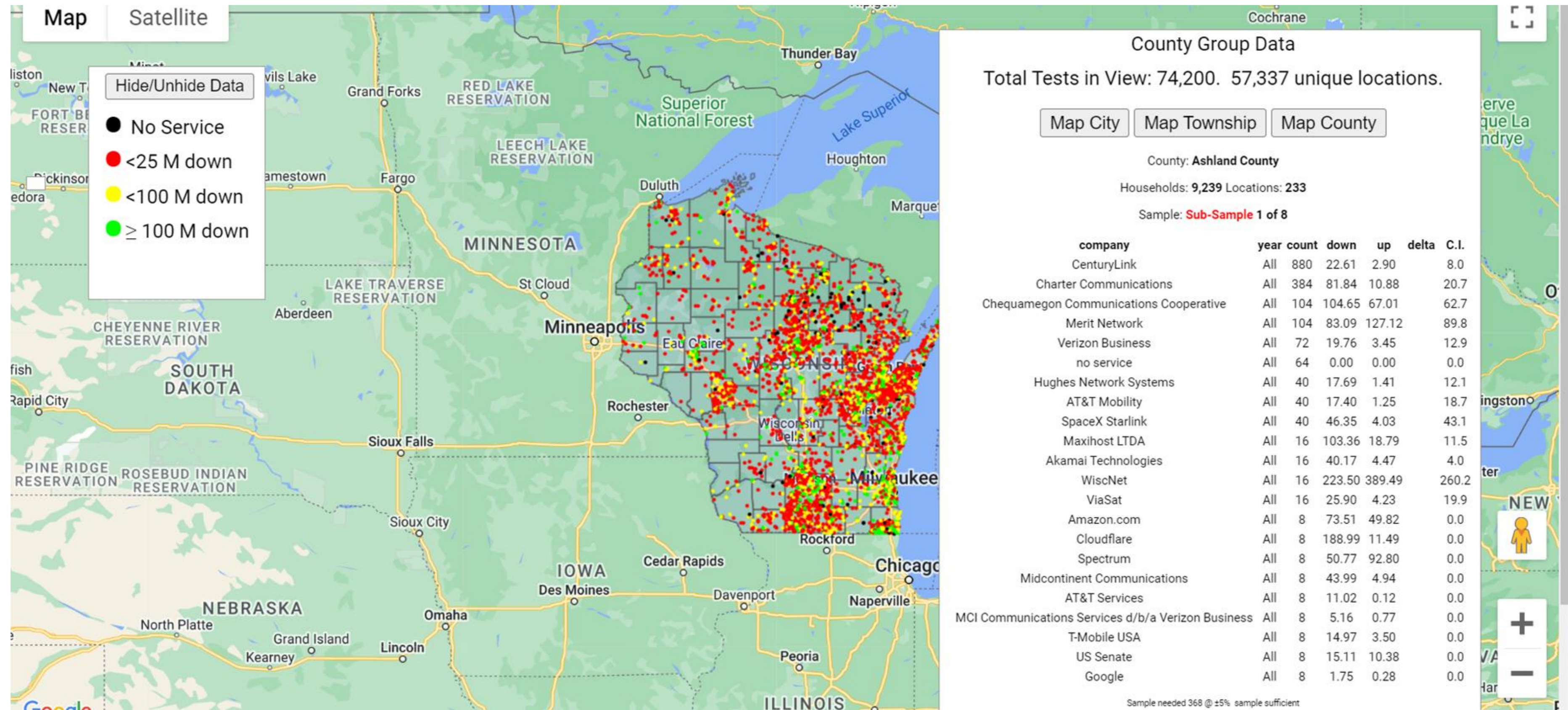


# Speed test Map





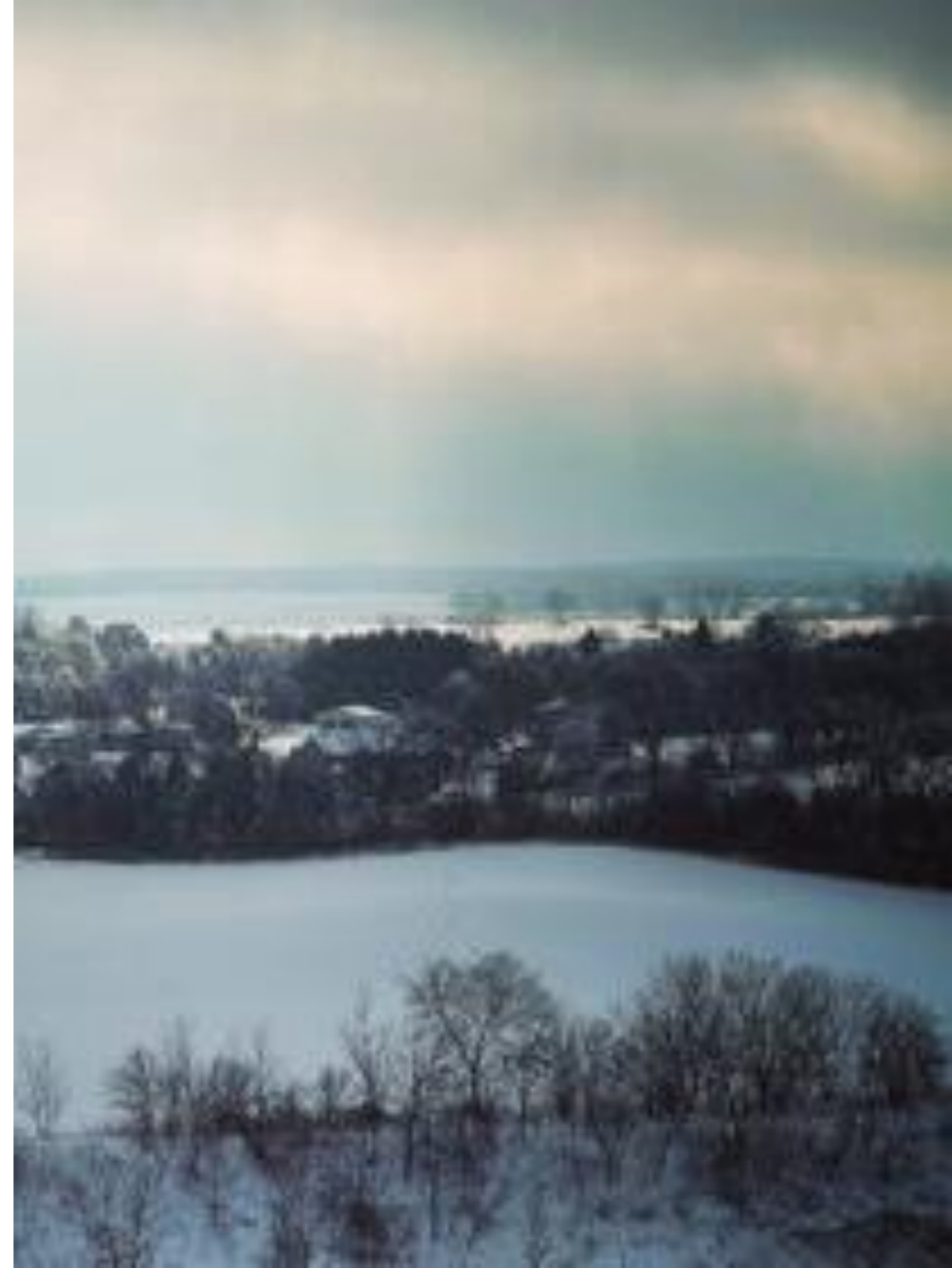
# Map with 'Map County'





# Toolkits

- WEDC/Div. of Extension – meeting later this week
- Wide variety of documents
- Needs:
  - Meet grant deliverables – clear expectations
  - Process / background
  - Information sheets
    - Funding
  - Best practices



# Regional Technical Assistance

- Format – TBD
- What we have heard:
  - Meeting overload
  - Clarity
  - Include partners when discussing
- Broadband Education
- Capacity
- How to address varying levels of needs
- Leverage subject matter expertise in region
- Leverage ED and planning initiatives
  - Workforce / Tourism
- Funding





# Additional Thoughts

- Please reach out
- Contact info

Danielle Jones, Director, Rural Initiatives

[Danielle.jones@wedc.org](mailto:Danielle.jones@wedc.org)

608-210-6832

- For additional assistance, non-broadband
  - <https://ruralwi.com/contact-us/>



**Email us!**  
**rural@wedc.org**  
**ruralwi.com**

