



ProsperitySouthwest.com

Volume 1

DRIFTLESS GETAWAYS

**A SAMPLER OF ADVENTURES
IN SOUTHWEST WISCONSIN**



**THE CONNECTING ENTREPRENEURIAL
COMMUNITIES ROADTRIP GUIDE**



INDEX

TABLE OF CONTENT



Photo by: David Mark from Pixabay

02

WELCOME!

03

PICTURESQUE
DRIVES AND VISTAS

05

ONE OF A KIND
WONDERFUL

08

HIKING AND
HISTORY

11

LOCAL BARS AND
BREWERIES

13

SUPPER CLUBS

15

UNIQUELY
DRIFTLESS TERRAIN

18

SAY CHEESE

21

LIVING IN
THE DRIFTLESS

INDEX

TABLE OF CONTENT



Photo by: David Mark from Pixabay

02

WELCOME!

03

PICTURESQUE
DRIVES AND VISTAS

05

ONE OF A KIND
WONDERFUL

08

HIKING AND
HISTORY

11

LOCAL BARS AND
BREWERIES

13

SUPPER CLUBS

15

UNIQUELY
DRIFTLESS TERRAIN

18

SAY CHEESE

21

LIVING IN
THE DRIFTLESS

From the tiny towns tucked into the valleys, to the abundant hilltop vistas, the topography reflects the wide range of entrepreneurial businesses and communities that call this region home. We could not list every single place you should visit, so this is a sample to get you started.

Drive times from Platteville are noted.

WELCOME TO THE DRIFTLESS



Want to recommend a Site or Business to be included?
Visit bit.ly/3TFTlvU or scan the QR code to add your favorites.

THE DRIVE IS HALF THE FUN



Rolling topography, sweeping vistas, intimacy with natural features, and pastoral scenes make this a driving dream. Two of the five Wisconsin Scenic Byways – Highways 60 and 133 - are in the region as well as Highway 35 - The Great River Road running along the Mississippi.

1

Platte River Valley

Hwy. 81, Platteville to Cassville - 40 minutes

Start in Platteville and drive west through the Platte River Valley, visit the historic square at Lancaster and the copper-domed courthouse, drive the vista ridge past Beetown to the Mississippi River at Cassville. Consider taking the ferry across the river to Iowa.

3

Cows and Cheese

Hwy 81, Platteville to Monroe - 1 hour

This is the heart of our dairy country and ends in the cheesetastic city of Monroe. Along the way view open pastures, see the quaint towns of Darlington and Argyle, the Toy Train Museum, see a large cheese production facility, and end at the Alp and Dell Cheese Store in Monroe.

2

Great River Road

Hwy 133, Cassville to Potosi - 25 minutes

Drive a portion of the Great River Road Scenic Byway between two historic river towns. Here you ride next to the river before riding on a ridgetop. Stop at “Beer’s Hometown” and visit Potosi Brewery, the National Brewery Museum, and the Great River Road Interpretive Center.



DUGWAY ROAD, GLEN HAVEN

Want solitude and scenery? Download WisDot’s Rustic Roads Guide.

ROADTRIP!

4

Amish Country

Hwy 80, Platteville to Muscoda - 50 minutes
Head north through the Amish country around Livingston, across the old Military Ridge Trail (now Hwy. 18) to Highland, then twist downhill into the Wisconsin River Valley. Finish in Muscoda - the "Morel Mushroom Capital."



While you enjoy the ride, please keep an eye out for horse-drawn buggies and wildlife.

Photo by: SWWRPC

5

Wisconsin River Ride

Hwy 60, Gotham to Bridgeport - 50 minutes
Take in 47 miles of the Lower Wisconsin River Road Scenic Byway as you enjoy nearly constant and intimate views of the river and the surrounding bluffs.



6

Go See Grand Dad

Hwy 35, Bridgeport to La Crosse - 1.3 hours
Perhaps the Granddaddy of scenic drives in Wisconsin and one of the finest in the Midwest. Start in historic Prairie du Chien, founded in 1817, and finish the drive at Grand Dad's Bluff in La Crosse to take in this majestic view.

7

Fishing and Frank

Hwys 23/14, Dodgeville to Viroqua - 1.5 hours
Starting in Dodgeville, there is a C-97 plane along the road, then Frank Lloyd Wright sites around Spring Green and in Richland Center, as you wind through the heart of trout fishing country into Viroqua. There, get a coffee at Wonderstate and nibbles at the Viroqua Food Co+op.

ONE OF A KIND WONDERFUL

SITES TO BEHOLD

Southwest Wisconsin has a scope of wonders, from architecture to unique finds to gathering spots. Maybe the land sparks these unique ideas, maybe the settlers brought them. Now is your chance to feed your wonder and experience the Driftless.



1. A.D. German Warehouse
Richland Center



2. Dickeyville Grotto
Dickeyville



3. Platte Mound M
Platteville

**DISCOVER THE
FLAVORS AND SITES
OF THE DRIFTLESS**



THE TRAVEL DEETS



ONLY IN THE DRIFTLESS

01 **A.D. German Warehouse**

Businessman Albert Delvino German commissioned Frank Lloyd Wright to design an innovative four-story warehouse. Prebook a tour.
*300 S. Church St., Richland Center
1 hour*

02 **Dickeyville Grotto**

Between 1924 and 1930 Father Matthias Wernerus created the Dickeyville Grotto with materials and objects sourced worldwide.
*377 Great River Road, Dickeyville
15 minutes*

03 **Platte Mound M**

The "M" was created in 1937 by some fun-loving College of Engineering students and is 241 feet high. Stairs lead to the top.
*18600 Mound Road, Platteville
8 minutes*

WHAT ELSE TO SEE?

MAKING GREAT MEMORIES AND STORIES TO TELL



The Toy Train Barn Museum

Explore the inventive, gadget-filled world in builder Buck Guthrie's wall-to-wall train landscapes. Ride on the people-sized train outside. *40 minutes*

W9141 WI-81, Argyle



Boaz Mastodon

In 1897, a mastodon bone was found in Boaz. The beast now resides at UW Madison, but the Boaz Community Park hosts a wood replica and historical plaque. *1 hour*

County E & Jefferson St., Boaz



Hubbard's Fishing Float

No boat? No problem. Raise the signal bucket at the Boat Landing and a boat will bring you to a prime fishing dock right below Lock #9. *1.5 hours*

Gordons Bay Road, Lynxville

EMBRACE



CHOOSE YOUR ADVENTURE

HISTORY



Photo by: Wisconsin Historical Society

Discover Wisconsin's Cornish heritage at Pendarvis's collection of stone buildings and lifestyles from the 1840's.

Mineral Point - 24 minutes

HIKING



This Wyalusing State Park vista is one of many area parks with trails and hikes to enjoy. *Bagley - 45 minutes*

& SPELUNKING



Eagle Cave is an onyx cave that was discovered in 1849 and opened to the public in 1938.

Blue River - 1 hour

THE OUTDOORS

HIKING



Belmont Mound State Park, 18650 Co. Rd., Belmont *13 minutes*

Belmont, from the French belle monte, means "beautiful mountain." The top of Belmont Mound is 1,400 feet above sea level, and Wisconsin's First Capitol historic site is a half mile west of the park. This mound helped early travelers find the capital.

Blue Mound State Park, 4350 Mounds Park Rd., Blue Mounds *30 minutes*

At the highest point in southern Wisconsin, Blue Mound State Park offers spectacular views and unique geological features. Over 20 miles of scenic hiking, off-road bike trails, and a family campground. There is access to the Military Ridge State Trail with bike-in campsites.

Governor Dodge State Park, 4175 WI-23, Dodgeville *35 minutes*

Governor Dodge State Park has over 5,000 acres of steep hills, bluffs and, deep valleys plus two lakes and a waterfall. Governor Dodge offers camping, picnicking, hiking, canoeing, biking, hunting, fishing, off-road biking, and horseback riding opportunities.

Nelson Dewey State Park, 12190 Co Hwy. VV, Cassville *1 hour*

Nelson Dewey State Park overlooks the Mississippi River from a 500-foot bluff. Camp, hike or, picnic high above the Mighty Mississippi. Named for Wisconsin's first governor, Nelson Dewey, the park has a rich history, featuring the Dewey home at the nearby Stonefield Historic Site.

New Glarus Woods, W5446 County Hwy. NN, New Glarus *30 minutes*

New Glarus Woods State Park is a 435-acre state park offering camping, hiking and, picnicking just south of the city of New Glarus. The park has direct access to the Sugar River State Trail, a 24-mile linear trail for bicycling and hiking.

Tower Hill State Park, 5808 County Rd. C, Spring Green *50 minutes*

Visitors can see how lead shot was made in the mid-1800s, hike bluff trails and, enjoy river views at this park outside Spring Green. A picnic area and shelter, hiking trails, canoe landing on the Wisconsin River and, a small campground are all available.

Wyalusing State Park, 13081 State Park Ln., Bagley *45 minutes*

At Wyalusing State Park, camp 500 feet above the confluence of the Wisconsin and Mississippi rivers. One of Wisconsin's oldest state parks, Wyalusing features hiking trails, a canoe trail, Native American burial mounds, bird watching, fishing, boating, bicycling and, picnicking on bluff top overlooks.

Yellowstone Lake State Park, 8495 N Lake Rd,

Blanchardville *35 minutes*

One of a few lakes in southwestern Wisconsin, 450-acre Yellowstone Lake State Park is one of the least visited state parks. It offers ample space to enjoy camping, swimming, fishing, boating, hiking, biking and, picnicking. You can rent boats and grab some ice cream too!

PRO TIP: ARE YOU INTO RARE PLANTS AND BIRDS? CHECK OUT THE AVOCA PRAIRIE



HISTORY

First Capital Historic Site, 18904 County Rd. G, Belmont *13 minutes*

Long before Madison became the capital of Wisconsin, Belmont was the capital city. See the buildings where Wisconsin's first laws were passed. You will gain an understanding of life before statehood as you tour the newly refurbished Council House and Court House.

Pendarvis Historic Site, 114 Shakerag St., Mineral Point *24 minutes*

Discover Wisconsin's Cornish Heritage. Pendarvis features a collection of primitive stone buildings dating to the 1840's. Also learn of the early preservation efforts that helped create the site. Explore the charming offerings in Mineral Point. When you're done, grab the local dish, the Cornish pasty, at the Red Rooster Cafe on High Street.

Stonefield Historic Site, 12195 County Rd. VV, Cassville *45 minutes*

Step back in time at the former estate and farm of Wisconsin's first Governor, Nelson Dewey. Learn about early agriculture and life before mechanized farm equipment. Adjacent to Nelson Dewey State Park. Stop in the historic town of Cassville with several nice eateries.

Villa Louis Historic Site, 521 N Villa Louis Rd., Prairie du Chien *1 hour*

Live the earliest days of Wisconsin history. Prairie Du Chien can trace its history back to the 1600s. It has ties as an early French trading post, in the War of 1812 and in the Winnebago War. At Villa Louis you will be on the site of the Dousman Family estate. Wonderfully interpreted and curated by the State Historical Society.

& SPELUNKING

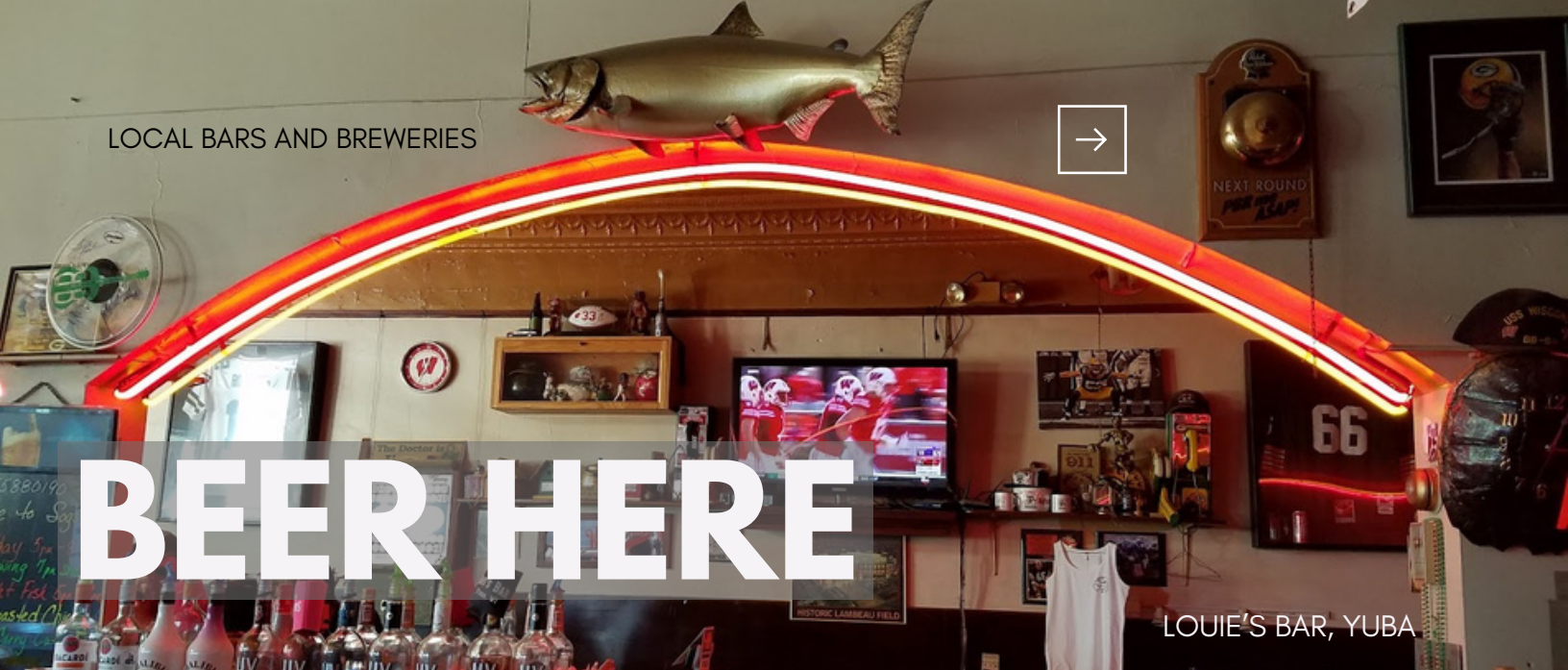
Eagle Cave, 16320 Cavern Lane, Blue River *1 hour*

This large onyx cave offers guided 1 hour and 2 hour group tours, and private wild caving adventures for youth groups are offered off season. Cabins and campsites are available onsite as well as canoe trips on the Wisconsin.

Cave of the Mounds Natural Landmark, 2975 Cave of the Mounds Rd., Blue Mounds *45 minutes*

Considered to be the premier cave in the Midwest, this cave system was discovered in 1939, and guided and self-guided tours typically last 45 minutes. Bring a jacket.

**MAKING
MEMORABLE
ADVENTURES
FOR THE
WHOLE FAMILY**



BEER HERE

LOUIE'S BAR, YUBA

Rural bars serve a neighborhood – but don't let the address fool you, these very local bars are usually miles outside of town, plus we included a couple of town bars that are too good to pass up. A bar might feature horseracing or cribbage or the best cheese curds ever. You won't know unless you stop in. Drive times from Platteville are noted. Call ahead to check open hours.

NORTH

Gracie's Point, 9396 State Rd. 80, Platteville

12 minutes

Pleasant Ridge Bar, 4948 Co. Rd. Z, Dodgeville

35 minutes

Honkers, 34055 State Rd. 80, Muscoda *45 minutes*

Hyde Store, 5314 County H, Ridgeway *45 minutes*

Mt. Zion Pub, 43499 County Rd. W, Boscobel *1 hour*

Rolling Ground Bar, 16463 Store Rd, Soldier's Grove

1.2 hours

Louie's Bar, Yuba, 10964 Co. Hwy C, Hillsboro

1.5 hours

SOUTH

Guler's Corner, 1895 State Rd. 80, Cuba City

17 minutes

Leadmine Tavern, 5389 Co Rd. I, Benton *20 minutes*

New Diggings General Store, 2944 Co. Rd., Benton

25 minutes

EAST

Fayette Saloon, 10990 Co. Rd. D, Rural Darlington

35 minutes

Good Fellas Tavern, 109 S. State St., Downtown

Argyle - *44 minutes*

Twin Grove Stage Stop, W3704 County Hwy. K,

Juda *1.2 hours*

Attica Bar, N 7298, Co. Hwy X, Albany *1.25 hours*

WEST

Yoder's Rockville Bar, 6090 US-61, Potosi

15 minutes

The Burton Tavern, 8001 Burton Ln., Potosi

30 minutes

Moon's Town Pump, 118 E. Amelia St., Downtown

Cassville *40 minutes*

Valley Public House, 7921 County U, Beetown

30 minutes

Dew Drop Inn, 12761 County X, Bagley *50 minutes*



BREWERIES

EXPLORE WITH FRIENDS, BOTH OLD AND NEW



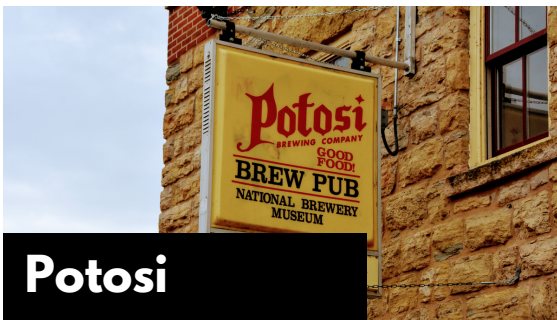
Monroe

Minhas Brewery, the oldest in Wisconsin, second oldest in the nation, has a robust lineup of brews and daily tours. 1208 14th Avenue, Monroe *1 hour*



New Glarus

The New Glarus Brewery is set on a gorgeous hilltop campus with tours, tastings and outdoor seating to enjoy. 2400 WI-69, New Glarus *1 hour*



Potosi

Founded in 1852, The Potosi Brewing Company also houses the National Brewery Museum. Tours available. 209 South Main St., Potosi *35 minutes*



Hillsboro

Hillsboro Brewing Company includes great food, great beer, an event center and a short-term rental property. 206 East Madison St, Hillsboro *1.5 hours*



Cashton

Footjoy Farm and Brewing grows the grain, brews the beer and makes the pizza - a match made in heaven. 407 Central Drive, Cashton *1.8 hours*



Richland Center

Mel's Micro sits on the west side of Richland Center is a great venue for good beer, some volleyball and a little pool. 21733 US14, Richland Center *1 hour*

DESTINATION FOCUS:

SUPPER CLUBS



JONES BLACK ANGUS, PRAIRIE DU CHIEN



SUPPER CLUBS

Crossroads Supper Club, 9315 State Rd-80, rural Platteville *12 minutes*

Located in the unincorporated hamlet of Arthur. A creative menu with the usual supper club mainstays. Finish at Gracie's across the street.

Hideaway Acres Supper Club, 4825 Bennett Rd., rural Benton *25 minutes*

Located in the woods. Get the table by the fireplace and stay until Sunday for country line dancing!

Louisburg Junction Supper Club, 2061 Louisburg Rd., rural Cuba City *20 minutes*

Known for its cocktails and experimental menu. But the Tomahawk Steak is a sight to behold.

Reds Supper Club, 27569 WI-81, rural Cuba City *13 minutes*

It hasn't changed in forever. It's everything you expect a supper club to be. Frog legs and grasshoppers!

Three Mile House Supper Club, 370 WI-35, rural Hazel Green *25 minutes*

Located three miles from the state line. It's a classic. Ask for the turtle. One of the best relish trays around.

Village Bar Supper Club, 3410 County HHH, Cuba City, Kieler *17 minutes*

A mainstay in this small village for generations. Best ribeye known to man. The 40-ounce King Prime Rib is a legend - take a picture with it!

Jones Black Angus, 37640 US-18, Prairie Du Chien *55 minutes*

Great seafood and prime Angus Beef in a classic old-fashioned atmosphere. Grab a pre-dinner drink at the sunken bar. It's a great supper club experience - and a locals hangout.

Hi Point Steak House, 6900 Co Rd HHH, Ridgeway *38 minutes*

Offering aged, hand-cut steaks, delicious seafood and house-made pastry. This supper club, founded in 1938, gets high points for service and has both dining room and patio seating.

**DELICIOUS
ADVENTURES
AWAIT**

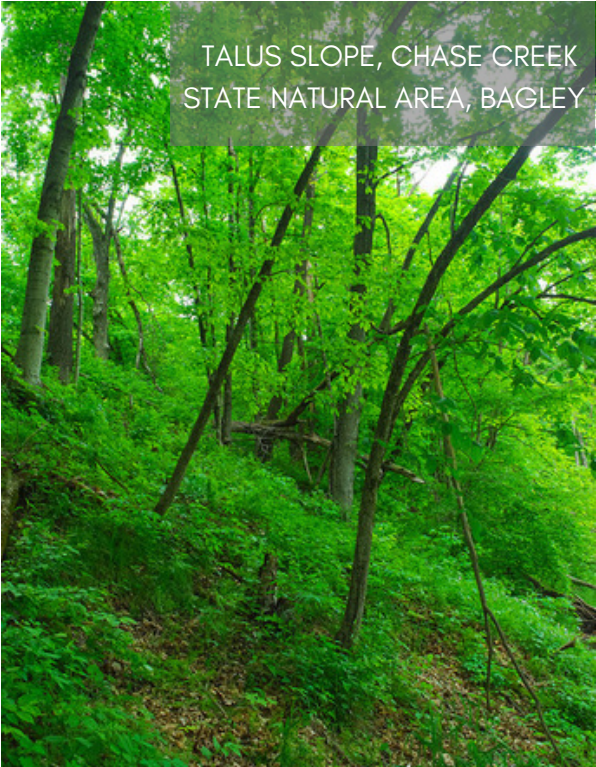
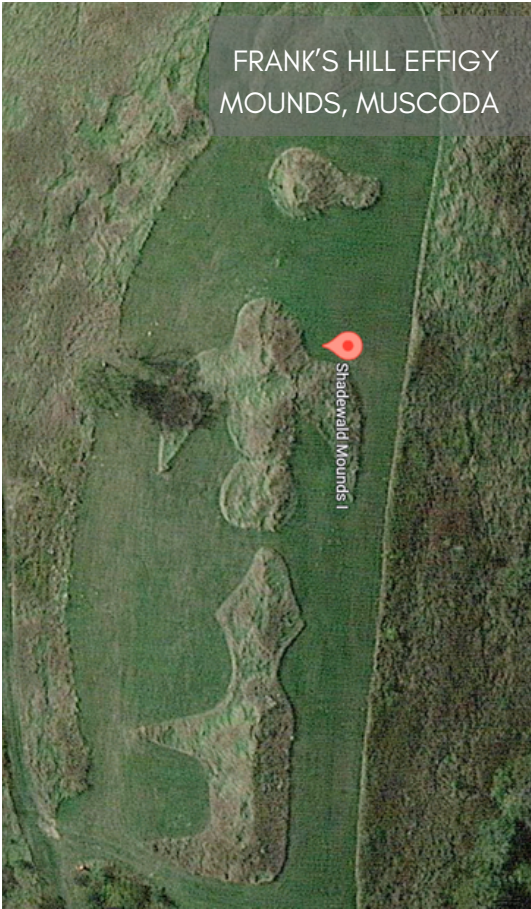


VILLAGE BAR SUPPER CLUB, KIELER

UNIQUELY DRIFTLESS TERRAIN

NO DRIFT

The Driftless Area was untouched by glaciers, giving the region attributes not found anywhere else. Being unglaciated, or lacking “drift,” allowed for hilltops, valleys and unique microclimates. In addition, the people inhabiting this zone left their unique marks as well.



**DISCOVER THE
HIDDEN WONDERS
OF THE DRIFTLESS
REGION**

EXPLORING



01

Badger Mine and Museum

*279 W. Estey St. Shullsburg
1 hour*

Minerals such as lead and zinc are close to the surface here, Native Americans began using lead and later Euro-Americans immigrated here creating the first industry – mainly in the southern Driftless. The towns of Shullsburg, Mineral Point, Benton, Platteville and Hazel Green are steeped in mining history. The Badger Mine and Museum contains a primitive hand-dug mine six stories below the ground. You can also learn how Wisconsin became “The Badger State.” The Mining & Rollo Jamison Museum in Platteville is another great option.

02

Chase Creek State Natural Area

*Dugway Road, Rural Bagley
1 hour*

Algific slopes are rare and are known only to occur in the Driftless Area. “Algific talus slopes” are small and isolated and occur on steep north or east-facing slopes with fractured limestone bedrock that retains ice and emits cold air throughout the growing season. These cold microhabitats support and enable the persistence of more northern plant species and periglacial relicts. Chase Creek features a rare algific slope natural community. Parking is on the side of Dugway Road, followed by a squirrely climb up the side of the bluff. This is expert-level hiking, as much of the site is steep and lacks trails. Please tread lightly.

03

Dewey Heights Prairie

*12190 Co. Hwy VV, Cassville
45 minutes*

The Driftless is known for its sweeping views of the landscape atop ridges above the surrounding area. Perhaps no other location provides a better view than the one at Dewey Heights Prairie, located within Nelson Dewey State Park. Dewey Heights Prairie rests atop a southwest-facing bluff 800–870 feet high, overlooking the Mississippi River, with exposed rocks, ledges, and cliffs. It’s a classic Driftless dry prairie and a sight to behold! See the effigy mound at Riverside Park next to the river too, for the full experience.

EXPLORING



04

Frank's Hill

*Hwy 193, rural Muscoda
50 minutes*

Perhaps nowhere in the world contains more effigy mounds than Southwest Wisconsin. Effigy mounds, built in the shape of animals, exist on hilltops throughout the Upper Mississippi and Wisconsin River Valleys. The effigy mound civilization lived in Wisconsin from roughly 700–1200 A.D. The Shadewald Mound Group, aka “Frank’s Hill” is open to the public and contains a variety of animal shapes and conical mounds believed to be “calendar mounds.” Park on the east side of Highway 193. Please enjoy visiting the mounds, but do not walk on them or disturb them.



BLAZINGSTAR IN BLOSSOM,
SPRING GREEN PRAIRIE

05

Spring Green Prairie

*Angelo Ln., rural Spring Green
1 hour*

Known as the “Wisconsin Desert,” the preserve is a place where a bluff levels off into sand dunes. It demonstrates the unique diversity of Driftless ecosystems. Spring Green Preserve harbors some of Wisconsin's rarest plant communities, including sand prairie, dry bluff prairie, and black oak barrens. Here you can see a land of cactus and lizards, sand dunes and dry grasses—without heading out West.

06

Trout Streams

*Rural Crawford and
Richland Counties
1 hour*

All counties in the Driftless contain trout streams but Richland and Crawford counties have the highest concentration. Due to the large number of springs in the Driftless, the area has become a Midwest leader in trout fishing. Springs feed these streams with the cold water preferred by trout. Many conservation efforts are underway to help maintain these streams’ quality. Please use the great WDNR maps online for specific spots, then grab your waders, poles, and net.

CHEESE PLEASE

Wisconsin and cheese go hand-in-hand, and we are pleased to share the bounty of Driftless cheese stores with you. There are many more in the region than we can list - they are all delish!



Brunkow Cheese

Brunkow has been producing specialty cheese since 1899. Stop at the Fayette Saloon when you're done.

Recommendation: Horseradish Raw Milk Cheddar

17975 Hwy F, Darlington
35 minutes



Carr Valley Cheese

Master Cheesemaker Sid Cook has won more top awards than any other cheesemaker in North America. Don't miss the photo op with Igor outside.

Recommendation: Bread Cheese - any flavor - and Ménéage Butter

1675 Lincoln Ave,
Fennimore 30 minutes



Chalet Cheese Cooperative

The only producer of Limburger cheese in the US and one of the oldest cheese cooperatives in the country.

Recommendation: Limburger - but keep it covered until ready to enjoy.

1N4858 County Hwy N,
Rural Monroe 1 hour



DON'T FORGET THE CURDS!



116 N. Main St.
Cuba City 15 minutes

Gile Cheese Outlet

The cheese is produced outside of town, but they sell it on Main Street. With over 140 varieties of cheeses to choose from, you'll have a hard time choosing just one.

Recommendation: Colby Longhorn



320 Commerce St.
Mineral Point 25 minutes

Hook's Cheese

Julie Hook is the only woman to win an overall world championship award at the World Cheese Championship, a Colby. Hook's is known for their long-aged cheddars.

Recommendation: 15-Year Cheddar



1050 Industrial Dr.
Muscodia 45 minutes

Meister Cheese

What started as a small rural cheese maker in 1916 has turned into one of the nation's top makers of cheese and whey products. Meister takes pride in their sustainable products.

Recommendation: Wild Morel Jack



The City of Monroe
1 hour

Monroe

Monroe is the cheesiest. It is home to the National Historic Cheese Making Center Museum and the high school team is the Cheesemakers.

Recommendation: Baumgartner's Cheese Store and Tavern or the Alp & Dell Cheese Store



300 US Hwy 14, Arena
1 hour

Arena Cheese

Celebrate the inventors of Cojack and 34-time medal winners in US, World and ACS Cheese competitions.

Recommendation: Cojack and a photo op with the mouse!



15982 WI-11, rural
Shullsburg 30 minutes

Roelli Cheese

After stopping cheese production in 1991, fourth-generation cheesemaker, Chris Roelli, re-branded the operation as an artisanal maker in 2006. He has built a reputation for outstanding small batch cheeses.

Recommendation: Dunbarton Blue

“AGE IS OF NO IMPORTANCE UNLESS YOU’RE A CHEESE.”

BILLIE BURKE



208 Water St.
Shullsburg 30 minutes

Shullsburg Creamery

This Creamery has been the heartbeat of the city since the 1930’s, both as an employer and in its support of local tourism. Watch curds being made in their viewing window.

Recommendation: The “Bargain Bin!”

LIVING IN THE DRIFTLESS

GET TO THE GOOD LIFE

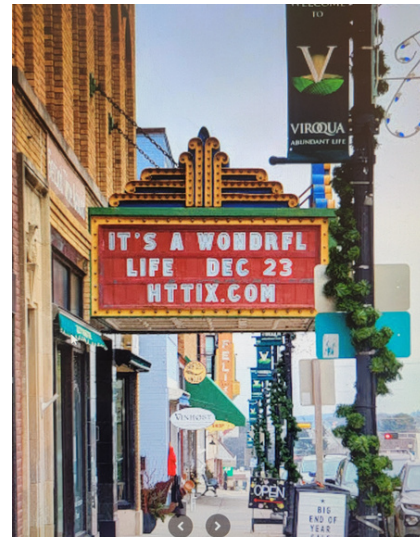


Photo: Precious Moments Photography

LIVE WHERE OTHERS JUST VACATION

Fresh air, no traffic, more time for fun. Why be stuck in your car, wait in line or endure the crush? We have room for you here.

LIVING LARGER



SPEND LESS LIVE MORE

1

It seems so... rural?

We are lacking Starbucks on every corner, but we have local roasters, artists, musicians, and successful entrepreneurs. What we don't have, we find or we make - including new friends.

2

Why Driftless?

We have good schools, affordable housing, and safe streets. Plus a chance to get to know your neighbors, a chance to be the mayor, an artist or a business owner. You call the shots.

3

Test drives welcome

Why chase the dollar when you can work nearby or work remote and keep more of what you earn? Come spend the weekend, or the month, or the year. All are welcome here.

- Affordable land and houses
- Easy access to nature
- Vibrant arts and music venues
- Welcoming communities
- Sunrises, sunsets and stars



CONTACT US

Want to know more about the Driftless Region? We'd be happy to answer your questions about our destinations, about launching or bringing your business here, or about helping you explore living here.



608 305 4428



Kate Koziol
k.koziol@swwrpc.org



www.prosperitysouthwest.com
www.swwrpc.org
www.bit.ly/3TFTlvU



SOUTHWESTERN WISCONSIN
REGIONAL PLANNING
COMMISSION

