



# The Wisconsin Rural Economy

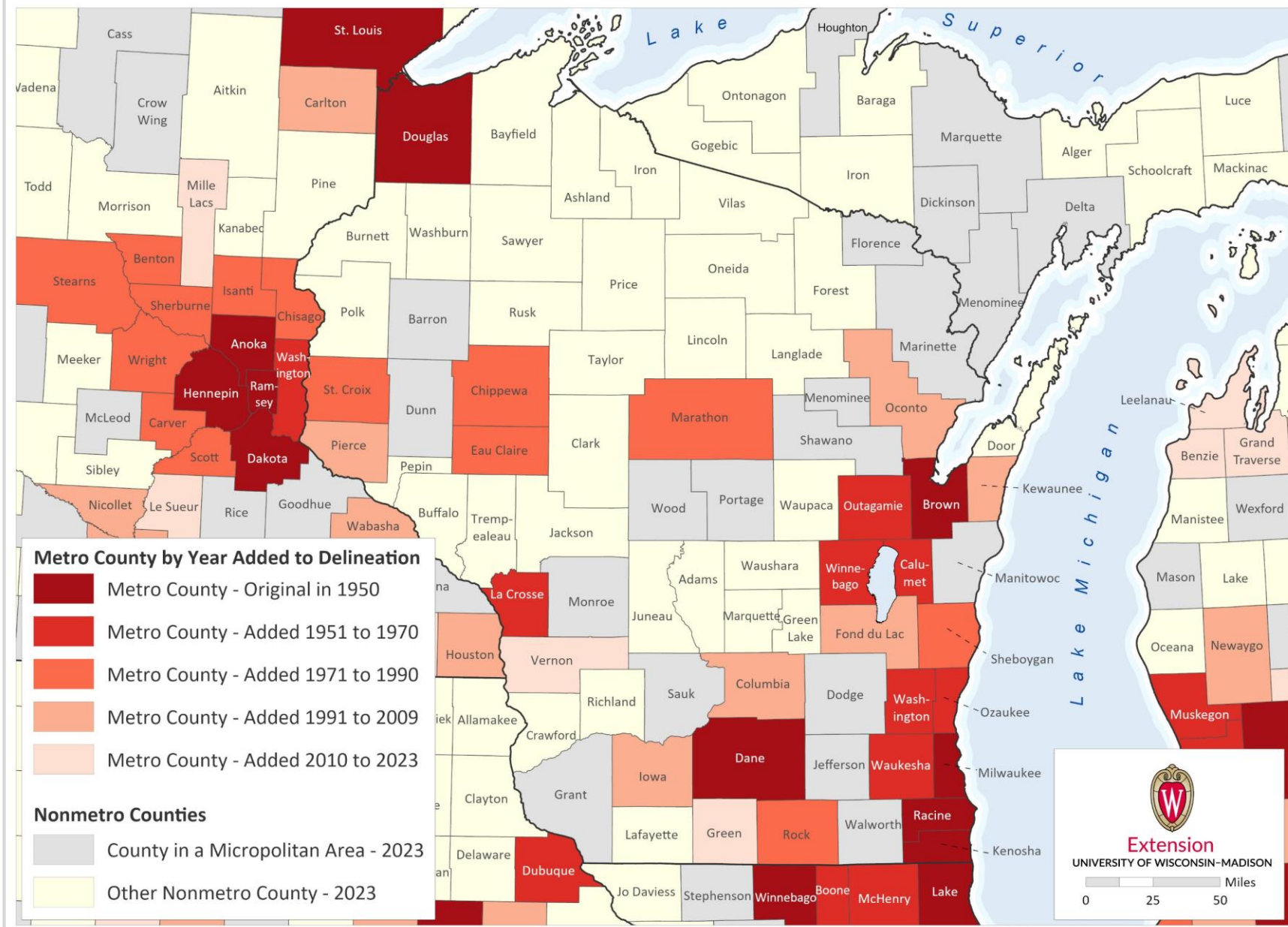
Steven Deller

Economic Development Administration University Center  
Department of Agricultural and Applied Economics  
Division of Extension  
University of Wisconsin-Madison



UW-Madison, EDA UC Wisconsin Rural Economic Summit March 2024

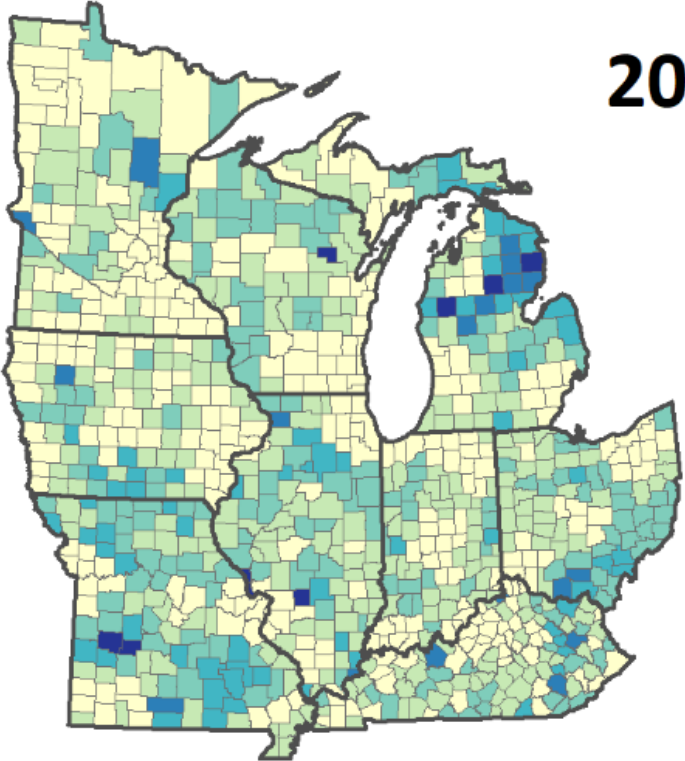
## Change in Metropolitan Counties - 1950 to 2023



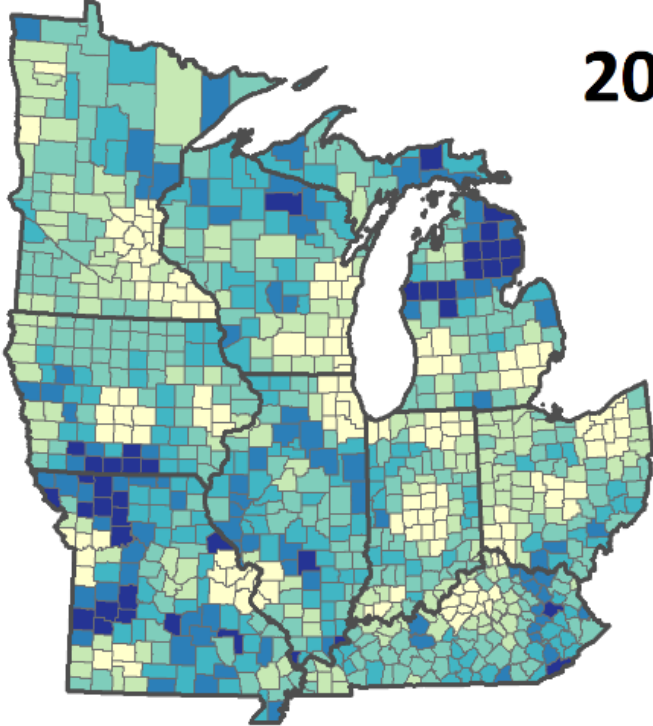
Metropolitan Statistical Areas are defined as having a central county or counties with an **urbanized area of at least 50,000 people**, plus adjacent outlying counties having a high degree of economic integration with the central county, as measured through worker commuting ties. Multiple counties are included in a Metropolitan Statistical Area if **at least 25 percent of employed residents in the central county commute to work in one or more adjacent counties.**



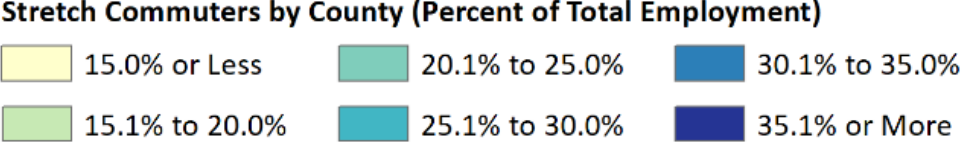
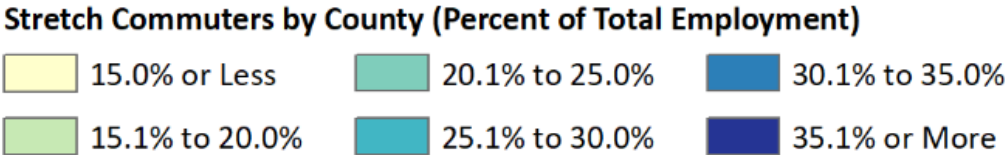
# Stretch Commuters: Commuting more than 50 Miles One-Way



**2006**



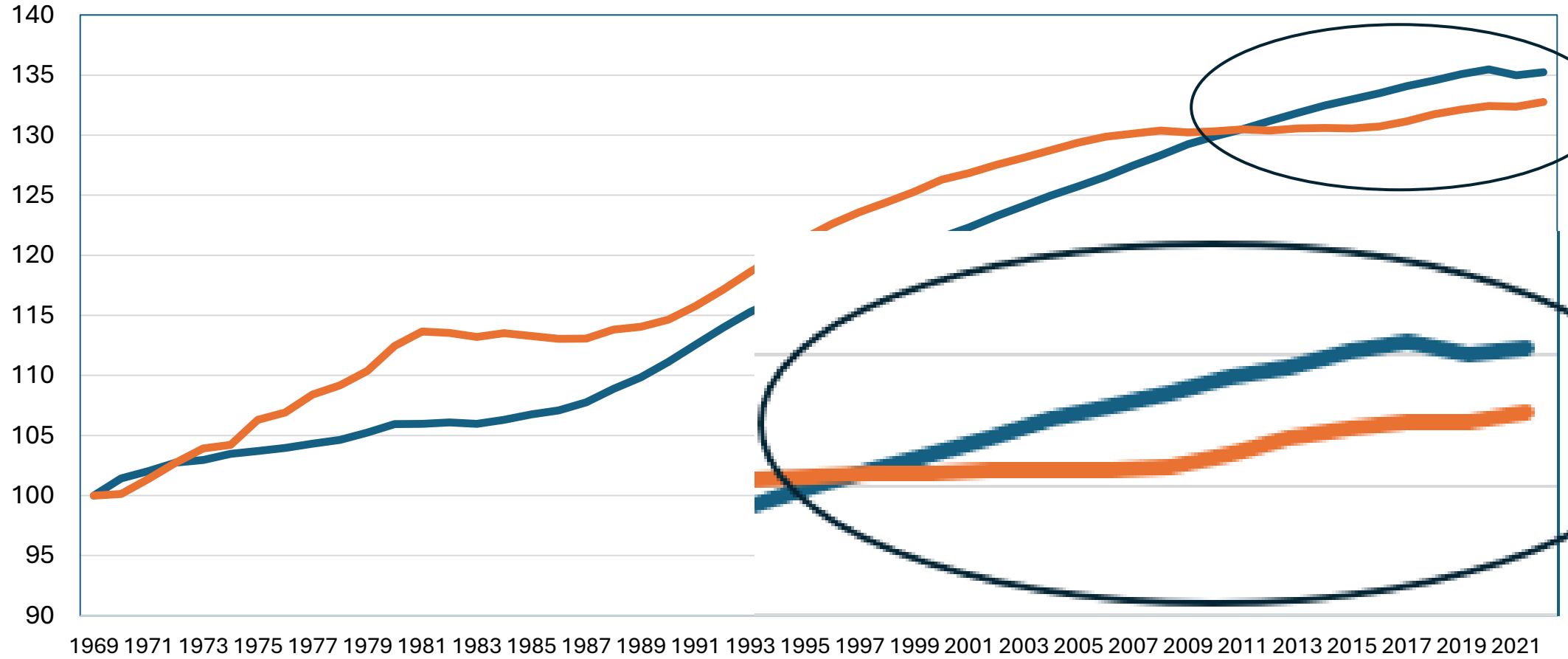
**2019**



Source: Kures and Deller, *Economic Development Quarterly*, 2023



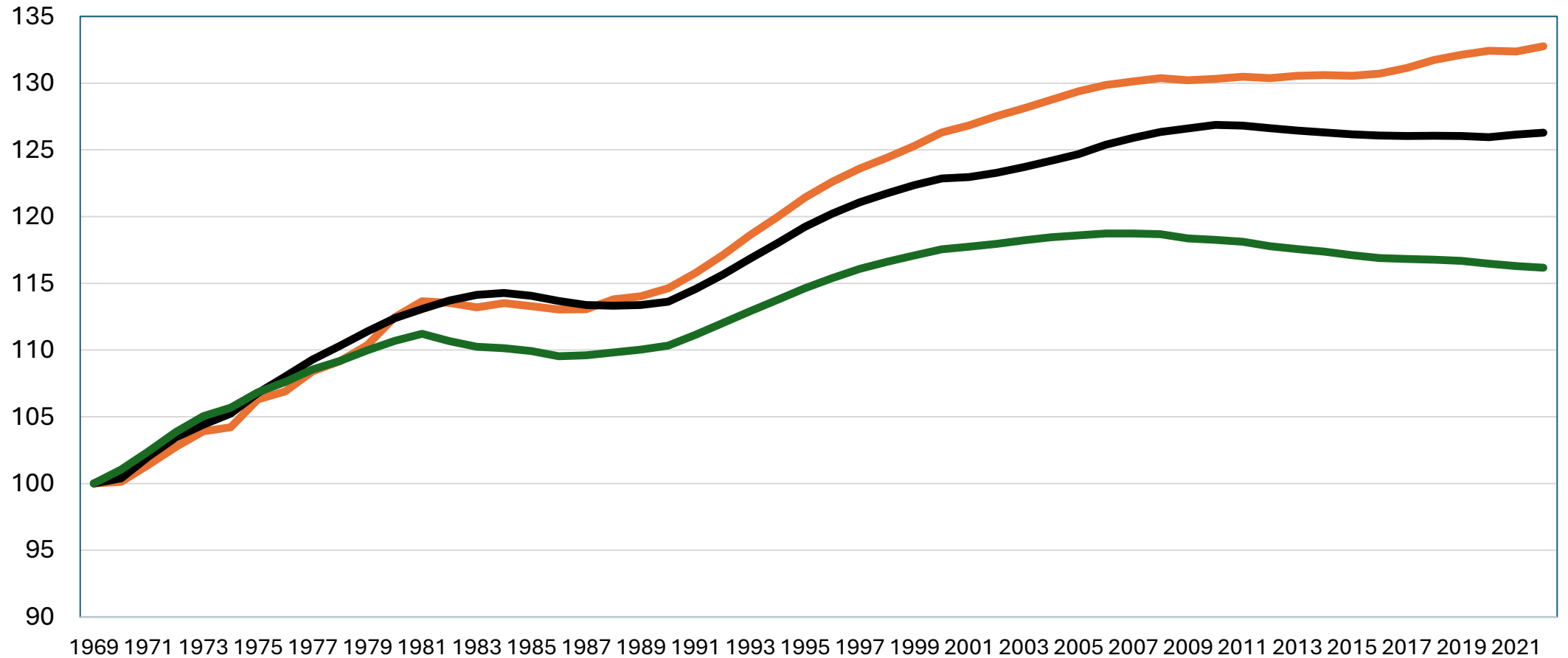
# Population Growth Index: Wisconsin



— Metro — Nonmetro



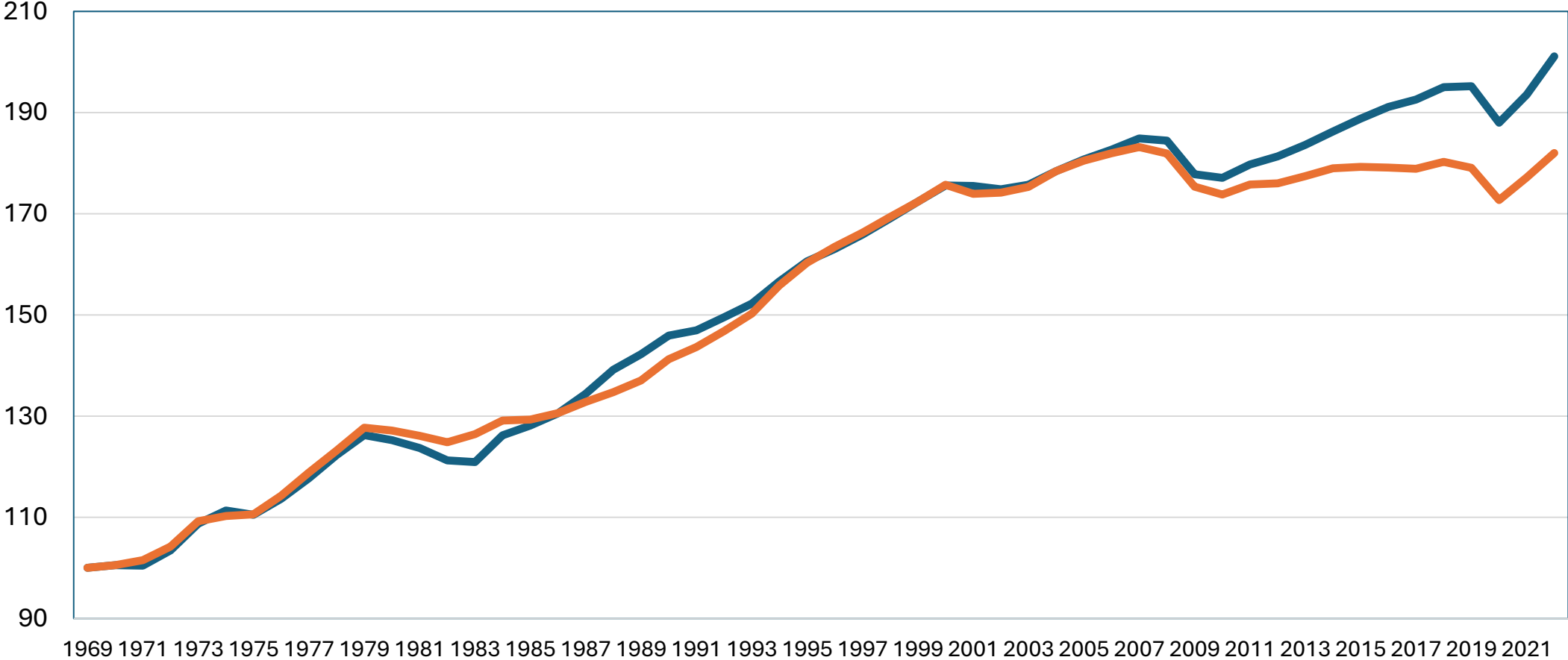
## Population Growth Index: Nonmetropolitan



— Wisconsin — U.S. — Great Lakes



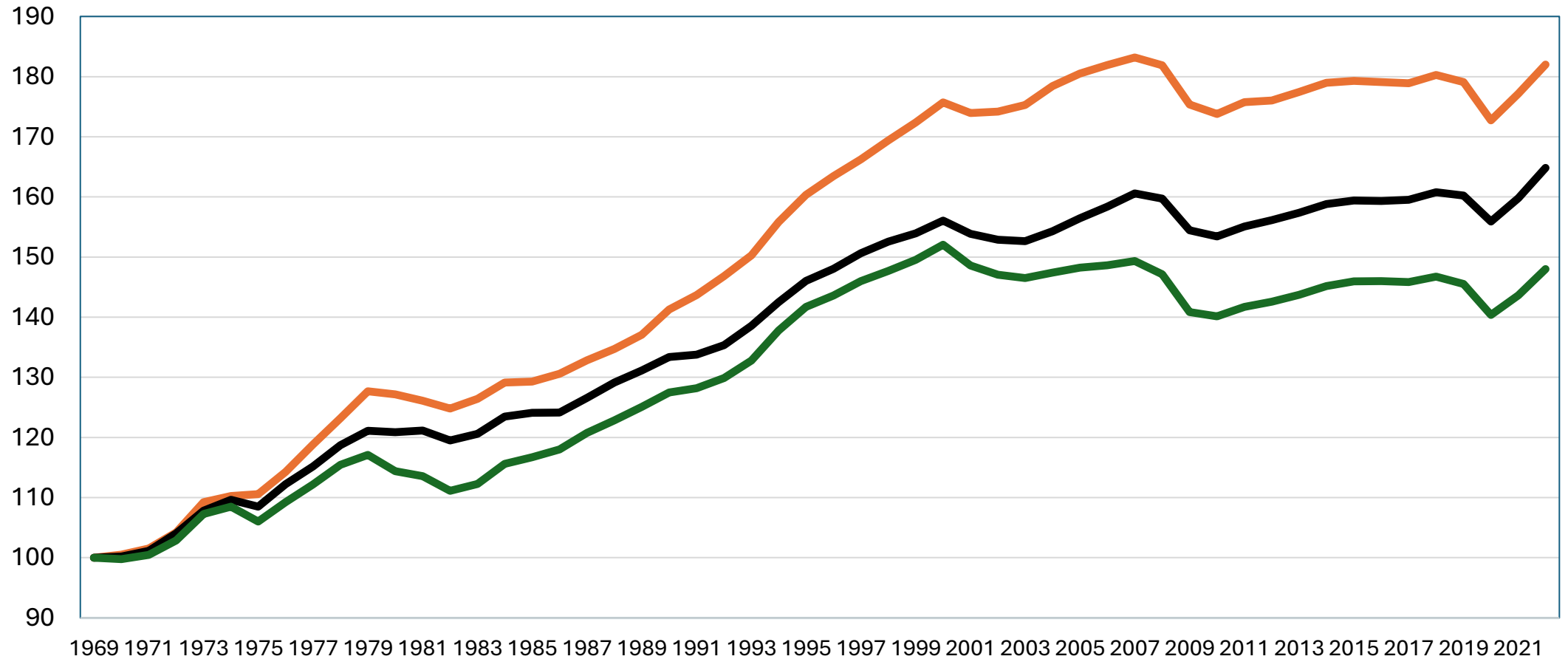
# Employment Growth Index: Wisconsin



— Metro — Nonmetro



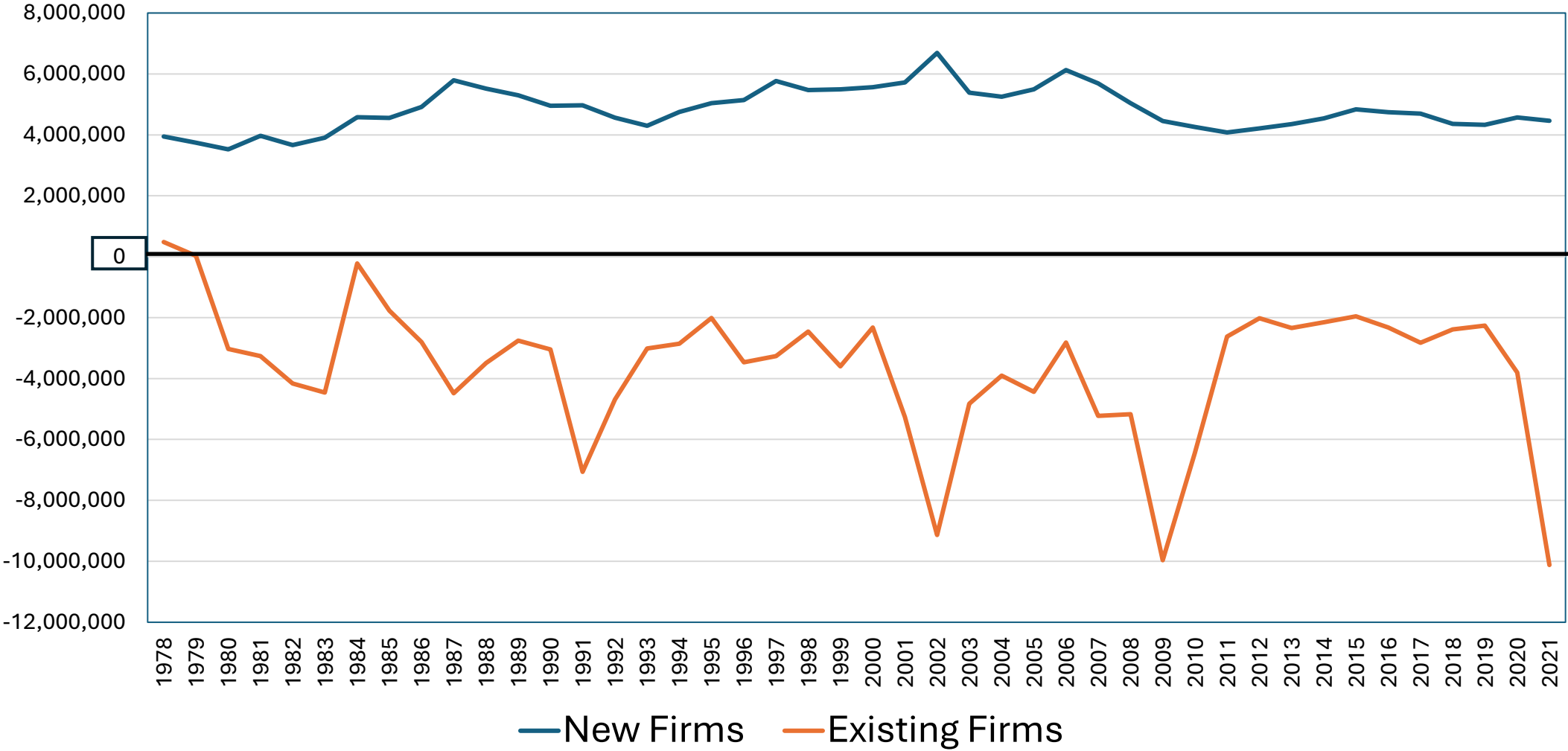
## Employment Growth Index: Nonmetropolitan



— Wisconsin — U.S. — Great Lakes

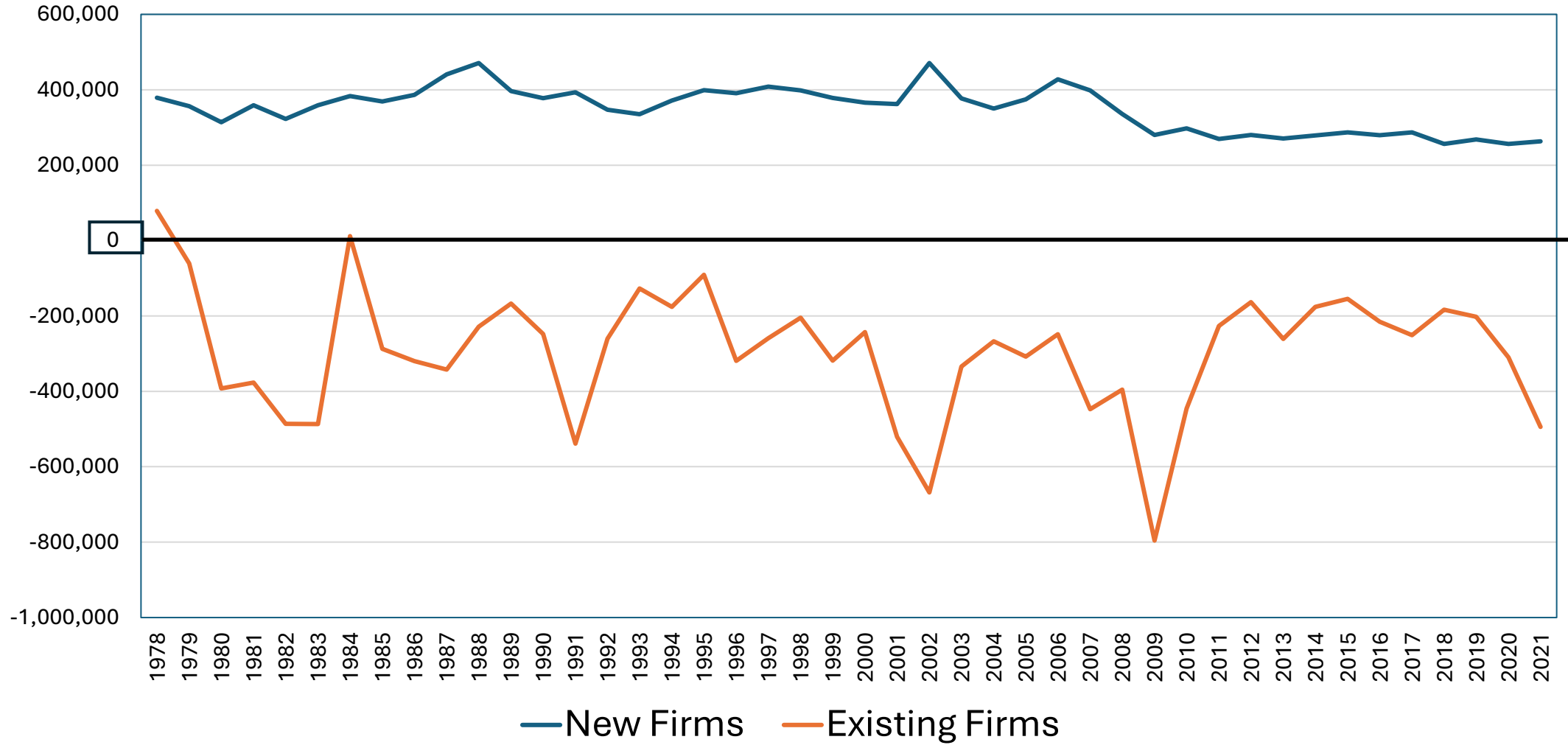


### Sources of Job Growth U.S.: Metropolitan Counties

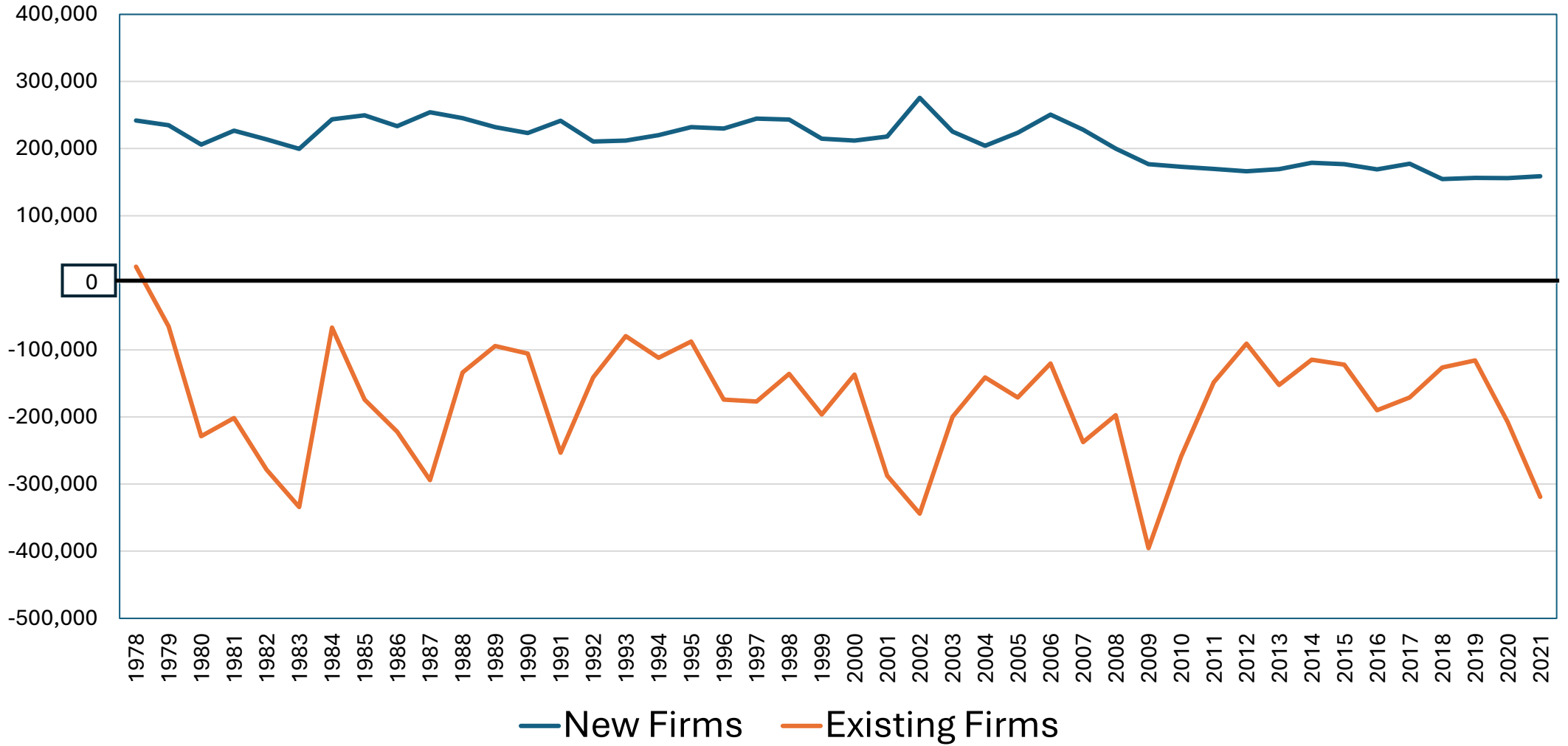




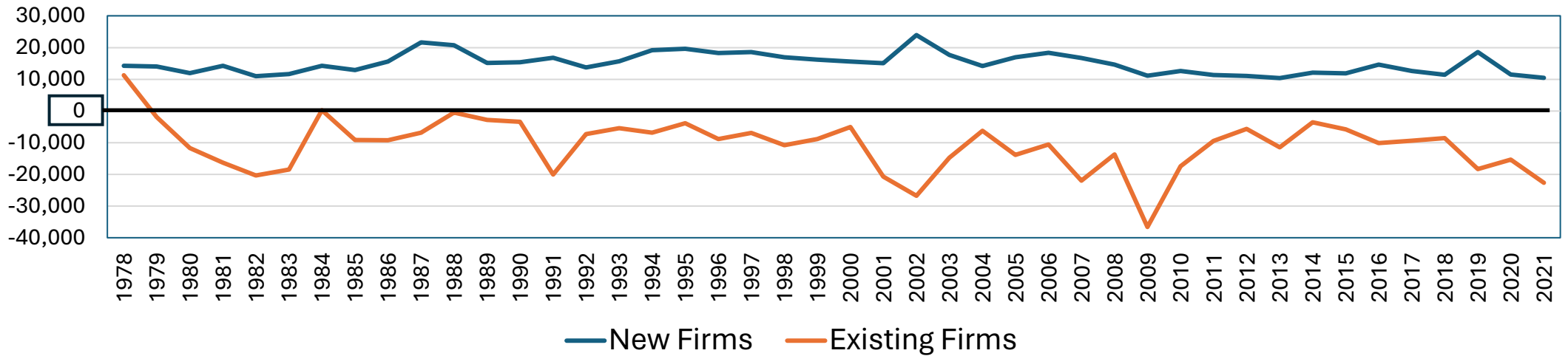
## Sources of Job Growth U.S.: Nonmetro Adjacent Counties



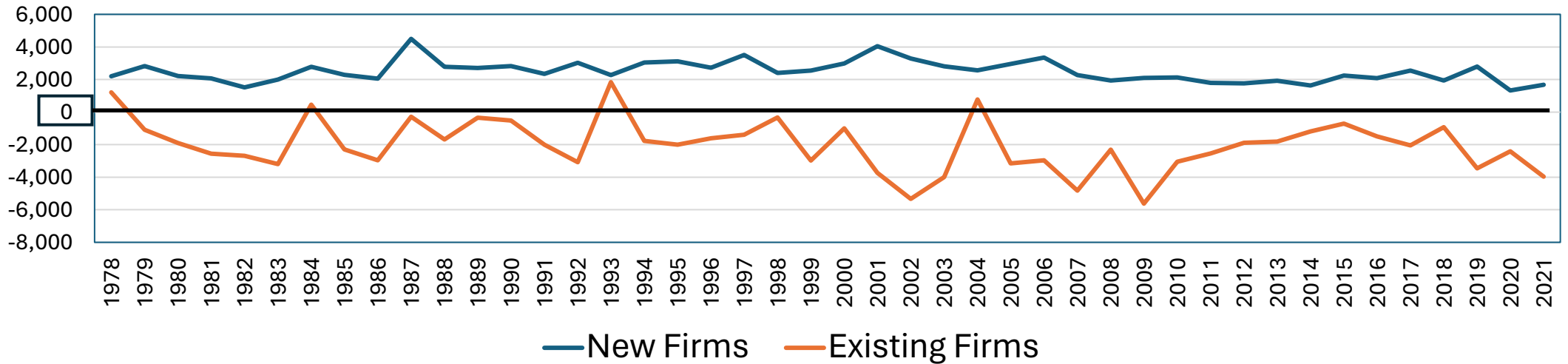
## Sources of Job Growth U.S.: Nonmetro Remote Counties



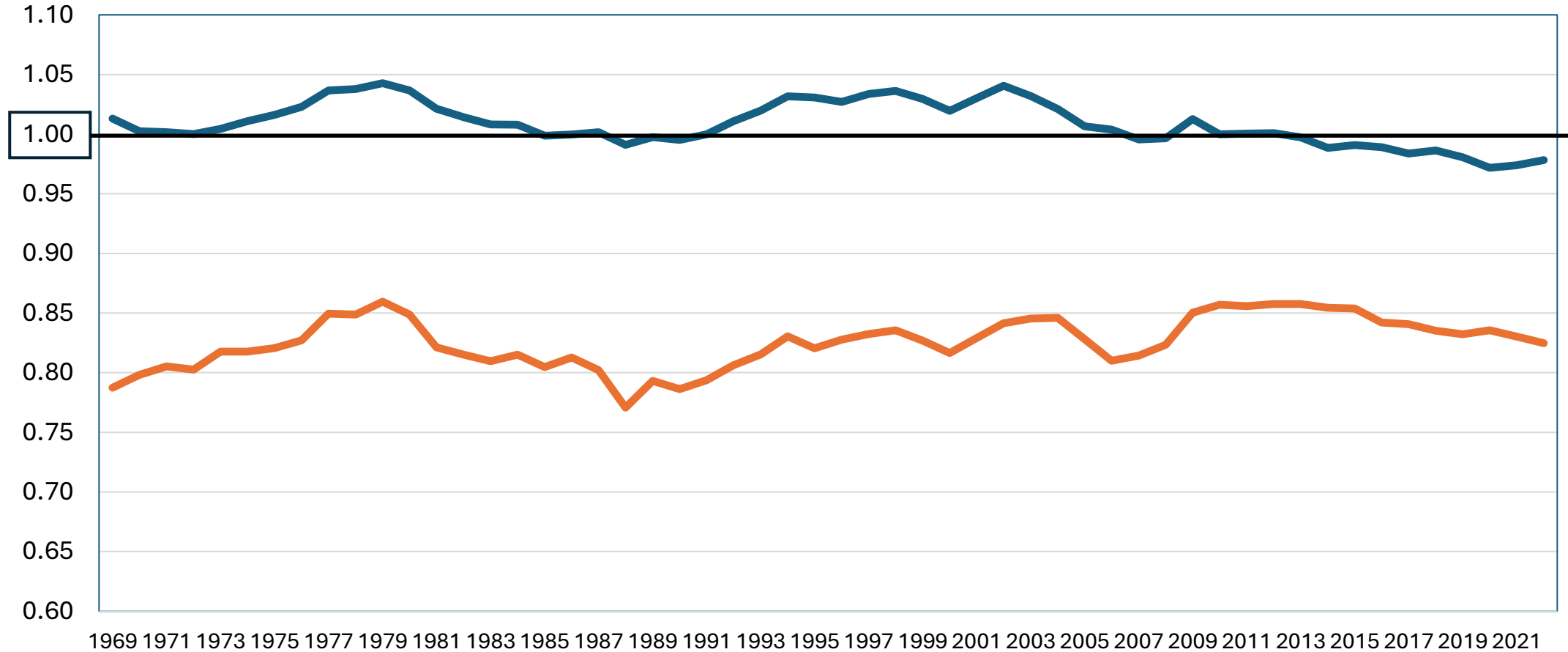
## Sources of Job Growth Wisconsin: **Nonmetro Adjacent Counties**



## Sources of Job Growth Wisconsin: **Nonmetro Nonadjacent Counties**



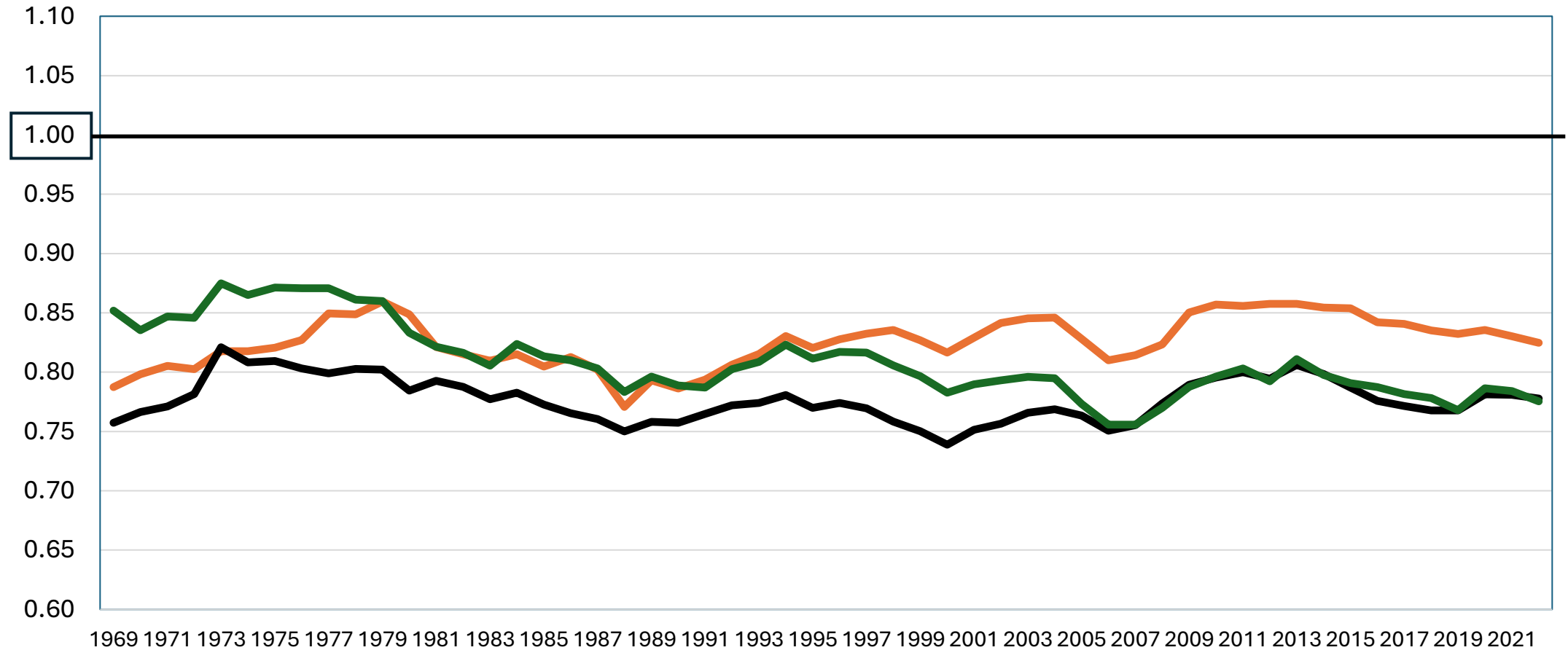
# Wisconsin Per Capita Income Relative to the U.S. Average



— Metro — Nonmetro



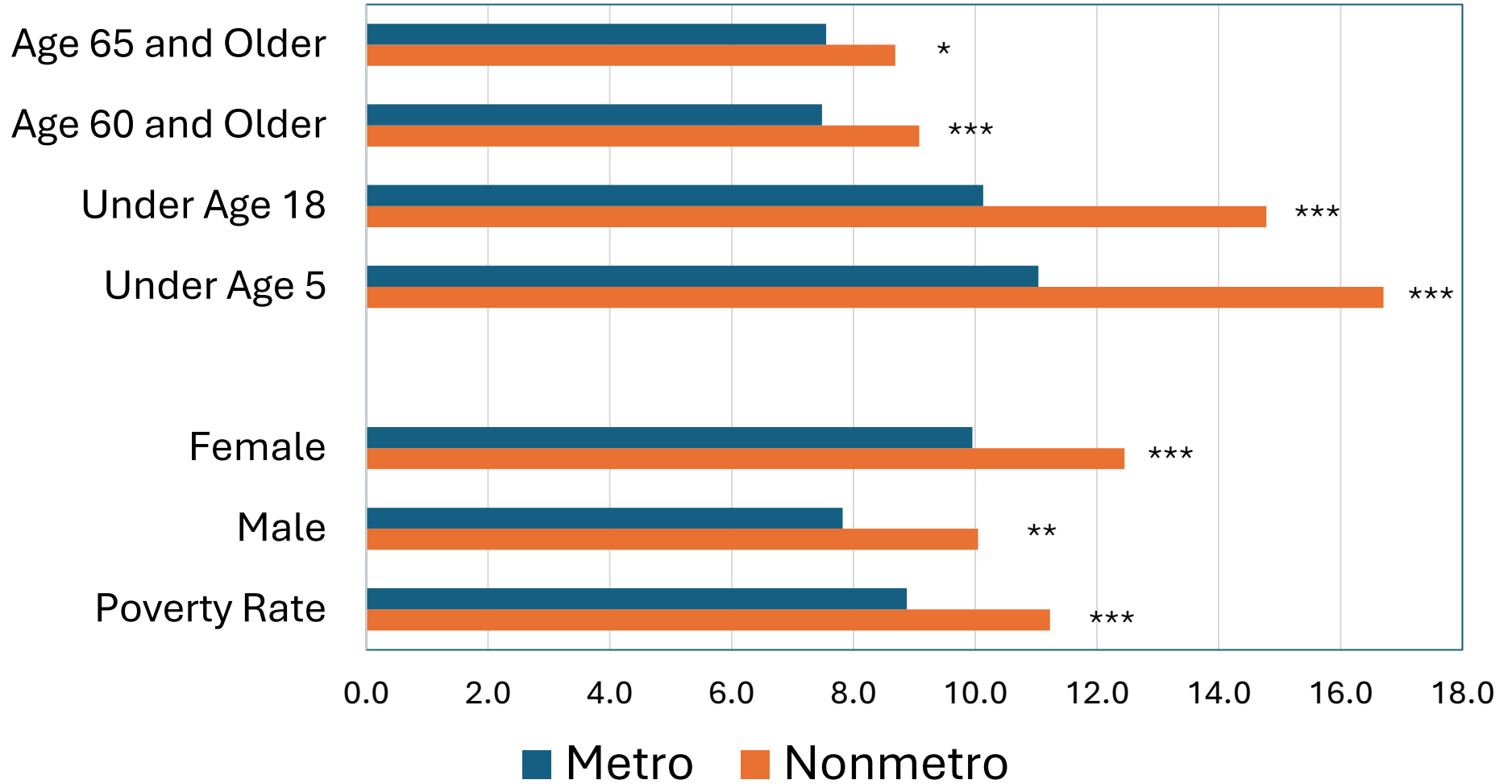
# Nonmetro Per Capita Income Relative to the U.S. Average



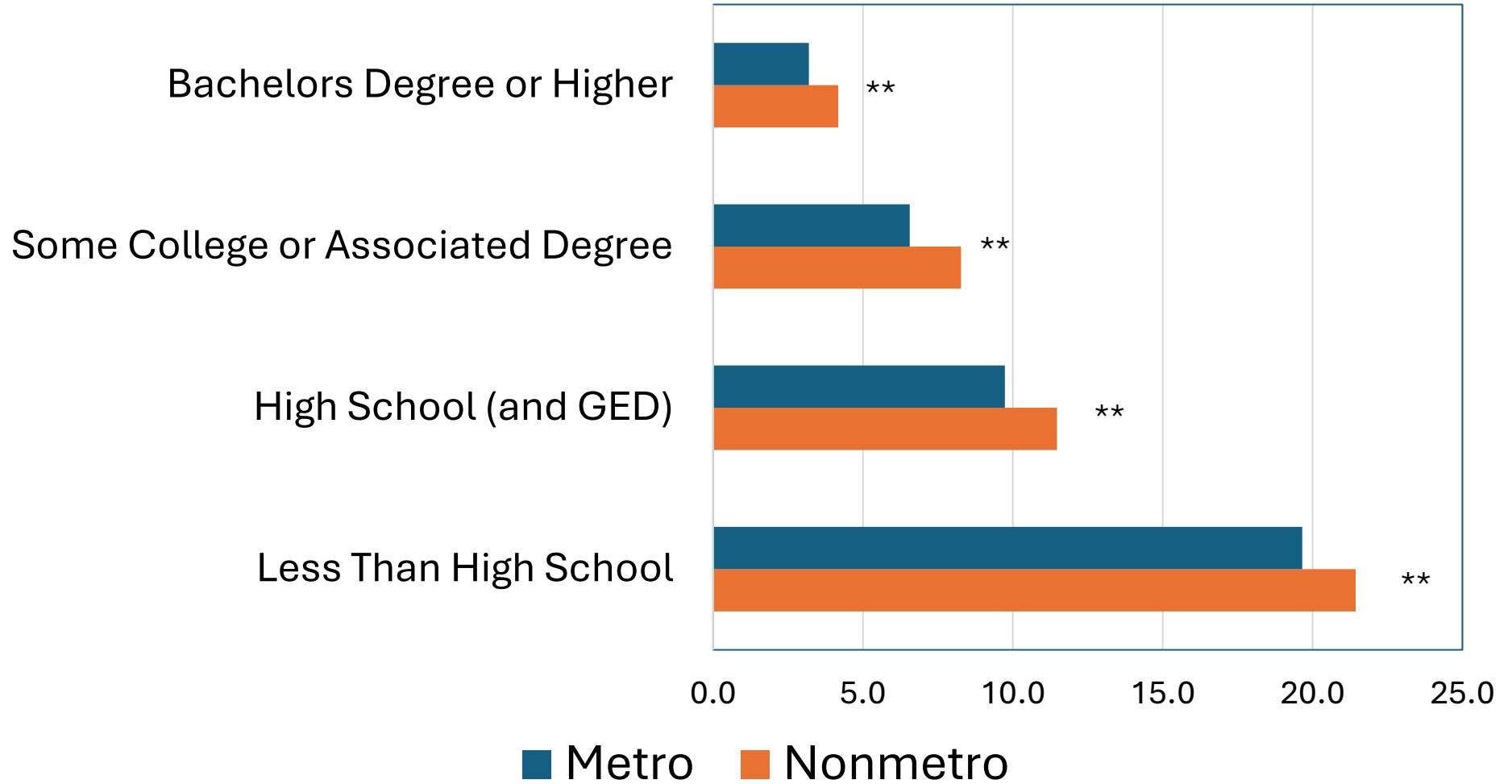
— Wisconsin — U.S. — Great Lakes



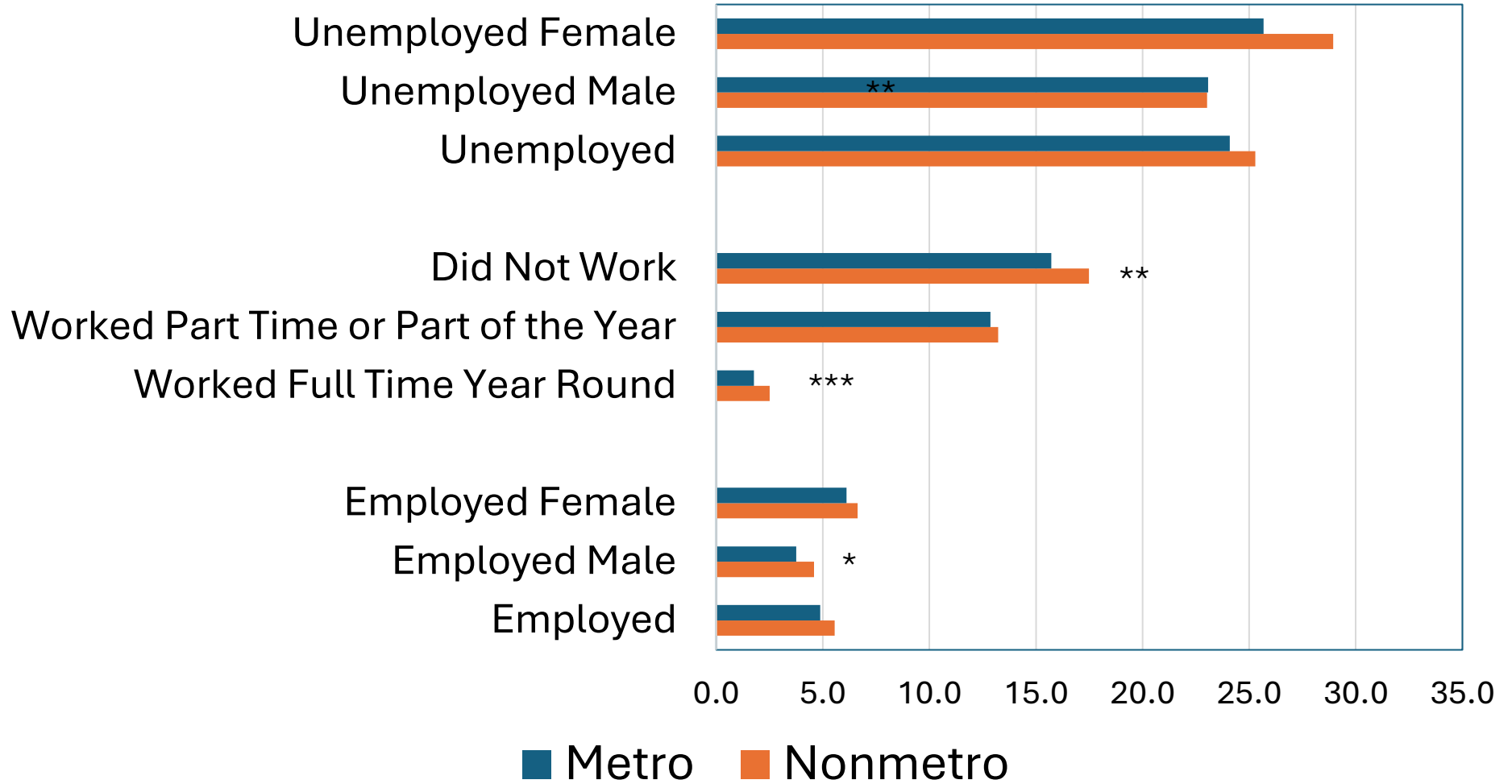
# Wisconsin Poverty Rates



# Wisconsin Poverty Rates



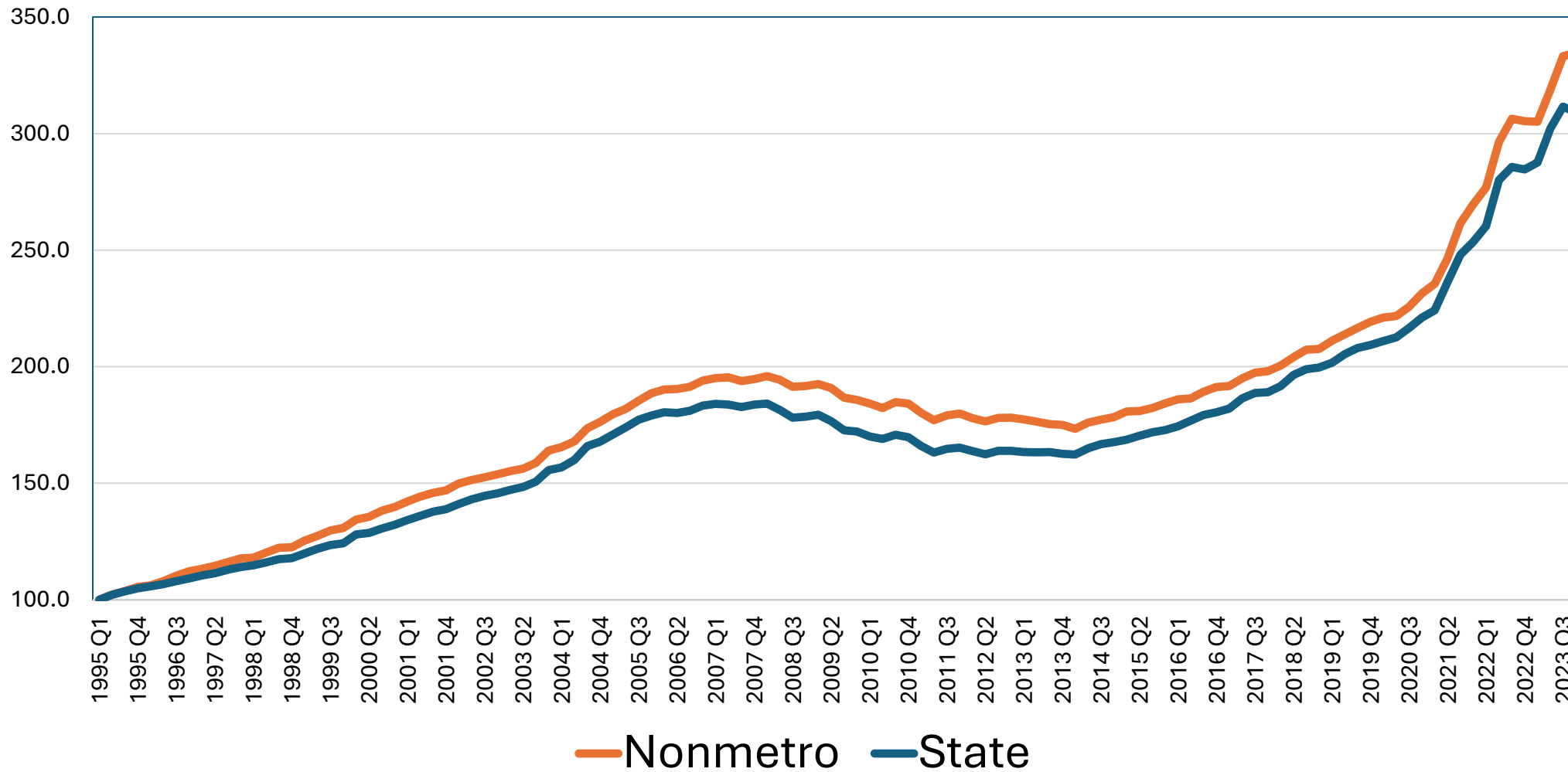
# Wisconsin Poverty Rates



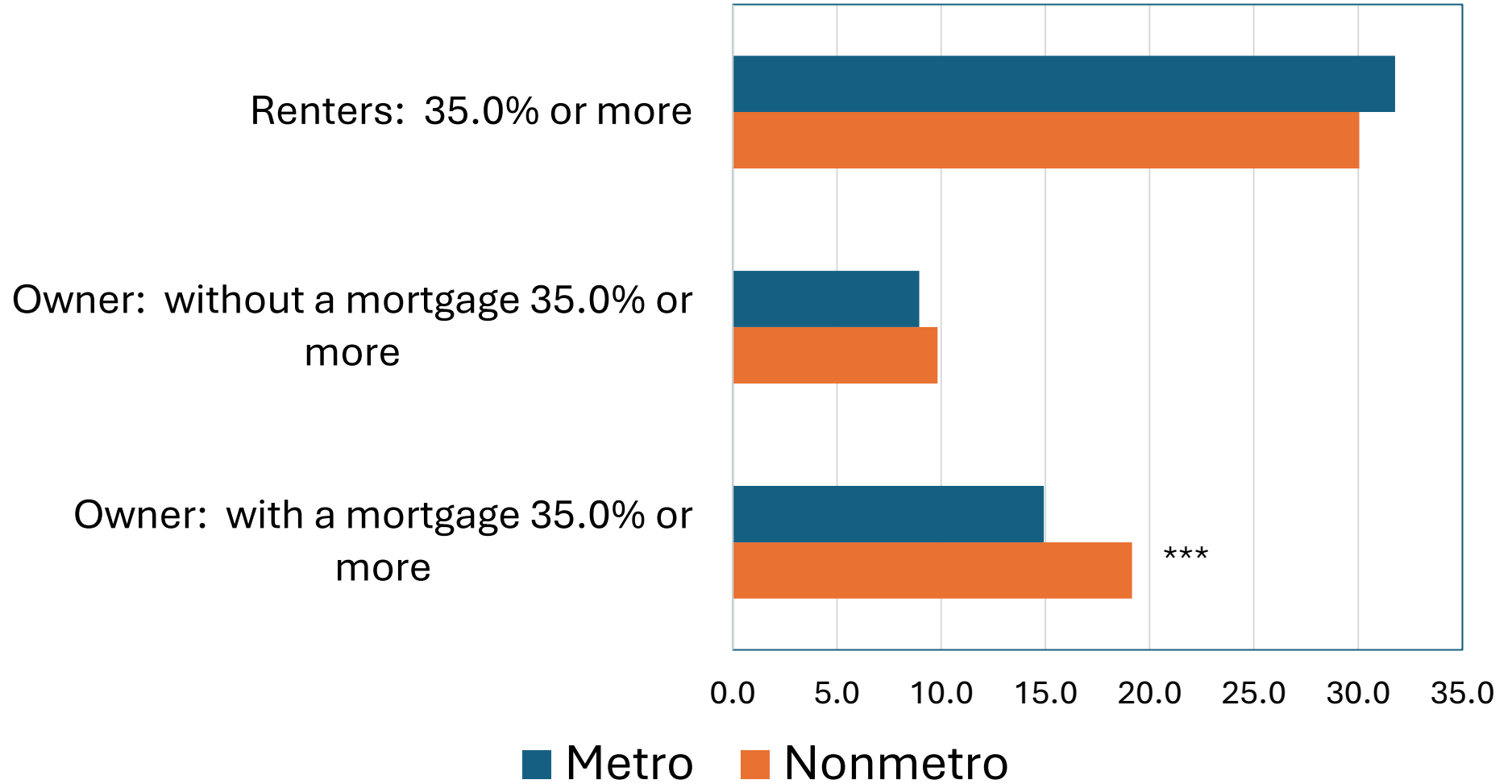




# Wisconsin All-Transactions Indexes



# Wisconsin Housing Financial Stress



Thanks for your time and attention.....

Steven Deller  
scdeller@wisc.edu

