

Ho-Chunk Nation

Summary of Broadband Equity, Access, and Deployment (BEAD) Program Eligibility and Deployment Progress

BEAD Eligible = Not Served and Not Enforceable Commitment

469 Total Broadband Serviceable Locations (BSLs)

222 Ineligible for BEAD: Served or Enforceable Commitment

183 Served (100/20 Mbps+ from wireline or licensed fixed wireless)

39 In progress state or federal grants, determined to be Enforceable Commitment

247 Eligible for BEAD: Not Served and Not Enforceable Commitment

62 Other federal funding awarded, not determined to be Enforceable Commitment

185 Not served

Projects Determined to be Enforceable Commitments			
Recipient	Program	Already Served	In Progress
Wittenberg Telephone Company - WI	FCC E-ACAM	40	1
Lynxx Networks	State Expansion	11	0
Bug Tussel Wireless	State Expansion	0	13
Vernon Telephone Cooperative, Inc. - WI	FCC E-ACAM	2	0
Wood County Telephone Company - WI	FCC E-ACAM	26	0
Telephone & Data Systems - WI	FCC E-ACAM	3	27
Total		82	41

Other Federal Funding Awarded but not determined to be an Enforceable Commitment			
Recipient	Program	Already Served	In Progress
Charter Fiberlink CCO, LLC - WI - Gigabit	FCC RDOF	23	6
Reedsburg Utility Commission - WI - Gigabit	FCC RDOF	1	36
Reedsburg Utility Commission-WI1702-A72	FCC E-ACAM	5	56
Total		29	98

Note: In-Progress Enforceable Commitment Total may exceed In-Progress location Total due to overlapping commitments

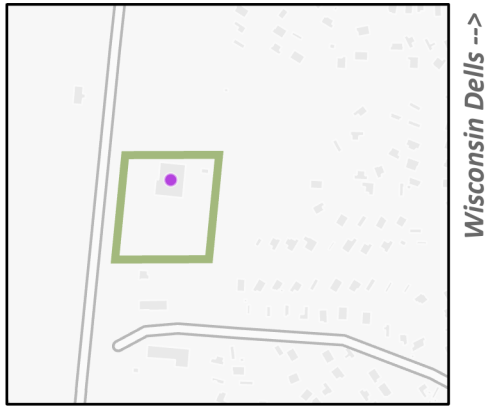
Data Source: Federal Communications Commission (FCC) Broadband Data Collection as of December 31, 2023. Service reflects internet service provider advertised service. Disclaimer: FCC data is known to undercount locations that may need broadband service, particularly in Tribal areas.

What is a broadband serviceable location (BSL)? A business or residential location at which mass-market fixed broadband internet access service is, or can be, installed. This includes single family homes, multifamily buildings, and business locations. This does not include empty parcels of land, secondary structures on a residential parcel (such as a standalone garage or barn), or abandoned structures that are not inhabitable.

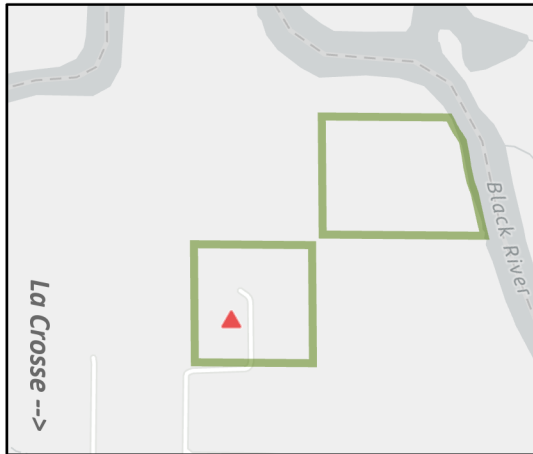
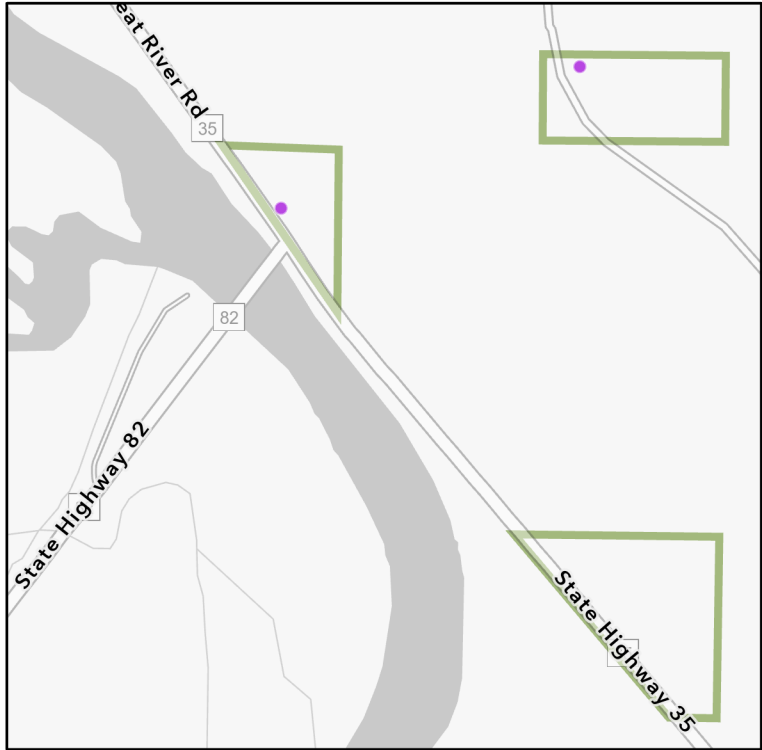


Ho-Chunk Nation

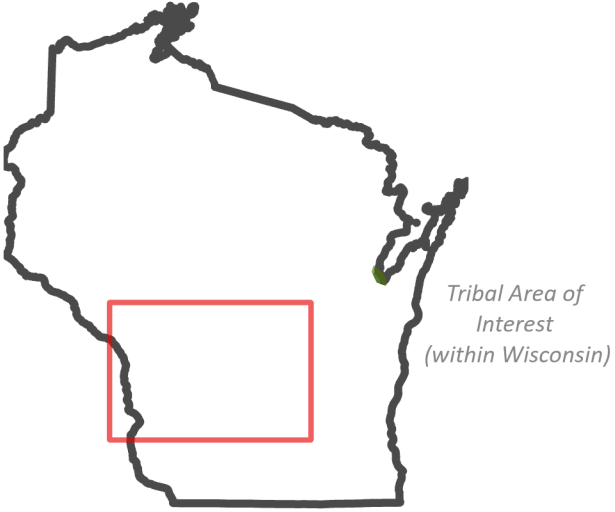
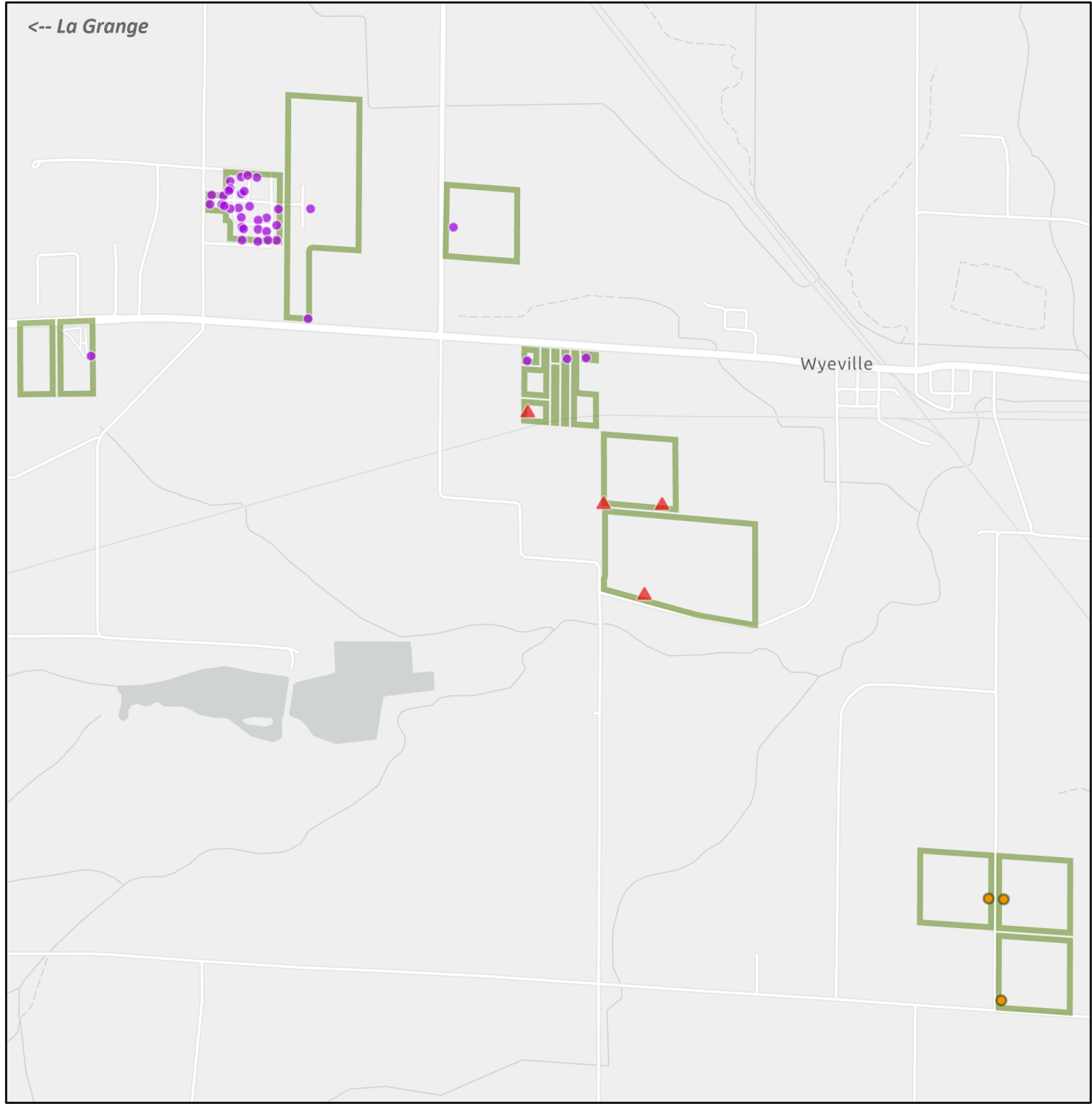
Central Sections



Wisconsin Dells -->



La Crosse -->



Tribal Area of Interest (within Wisconsin)

BEAD Eligibility

- ▲ Ineligible - In Progress
- ▲ Other Federal Funding - Potentially BEAD eligible
- Eligible
- Ineligible - Served

Inset maps display non-contiguous multipart sections of tribal areas to display data as clearly as possible. Some parcels may be omitted.

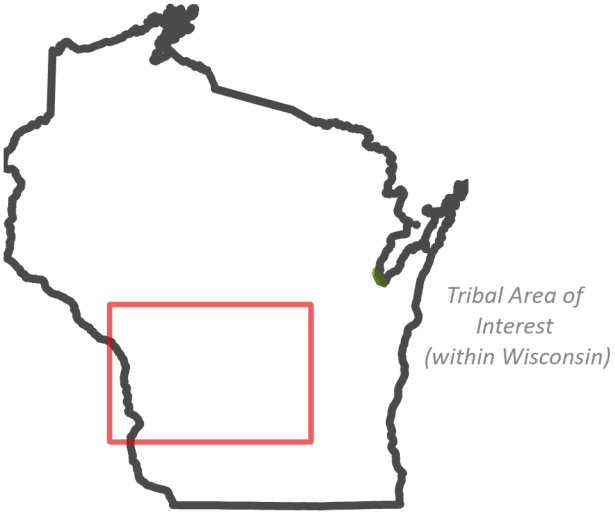
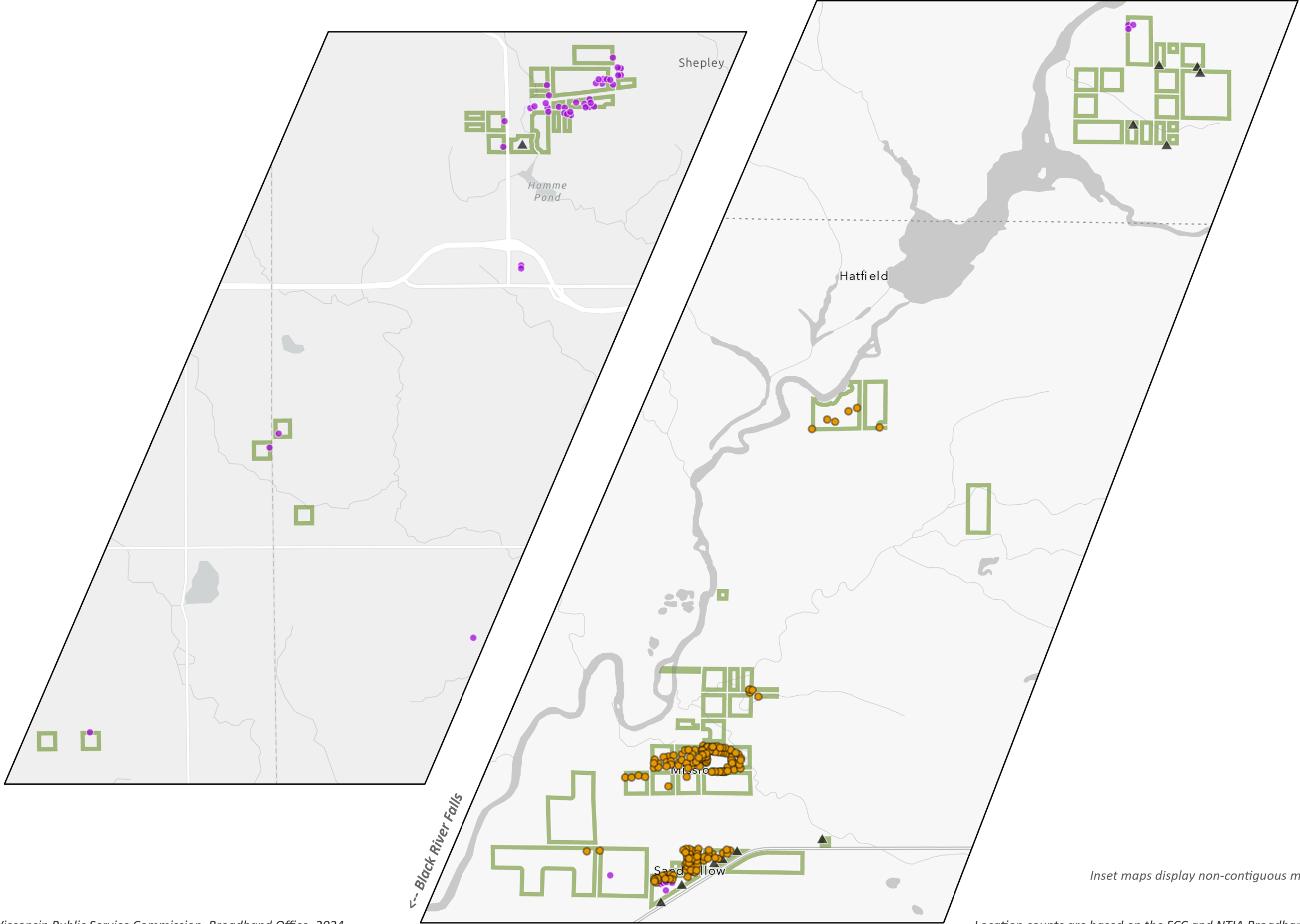
Wisconsin Public Service Commission, Broadband Office, 2024. Data compiled by the Public Service Commission. FCC data is known to undercount locations which may need broadband service, especially on tribal lands; Location counts and related analyses are subject to change based on this data and applicable version. Please refer to the FCC National Broadband Map for further information.

Location counts are based on the FCC and NTIA Broadband Fabric and availability, version 4 [December 2023 and May 2024]. Territory designations are based on U.S. Census Bureau dataset of tribal lands. BEAD eligibility is a preliminary determination based on the BEAD Challenge Process and is pending approval by NTIA.



Ho-Chunk Nation

Northern Sections [1 of 2]



BEAD Eligibility

- ▲ Ineligible - In Progress
- ▲ Other Federal Funding- Potentially BEAD eligible
- Eligible
- Ineligible - Served

Inset maps display non-contiguous multipart sections of tribal areas to display data as clearly as possible. Some parcels may be omitted.

Wisconsin Public Service Commission, Broadband Office, 2024. Data compiled by the Public Service Commission. FCC data is known to undercount locations which may need broadband service, especially on tribal lands; Location counts and related analyses are subject to change based on this data and applicable version. Please refer to the FCC National Broadband Map for further information.

Location counts are based on the FCC and NTIA Broadband Fabric and availability, version 4 [December 2023 and May 2024]. Territory designations are based on U.S. Census Bureau dataset of tribal lands. BEAD eligibility is a preliminary determination based on the BEAD Challenge Process and is pending approval by NTIA.

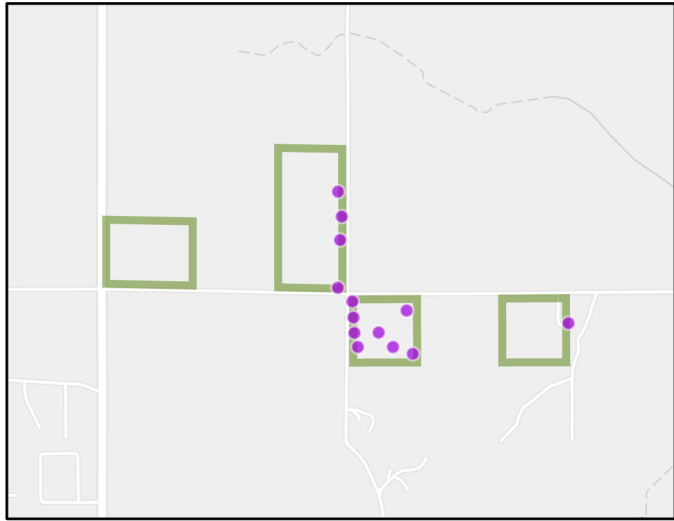


Ho-Chunk Nation

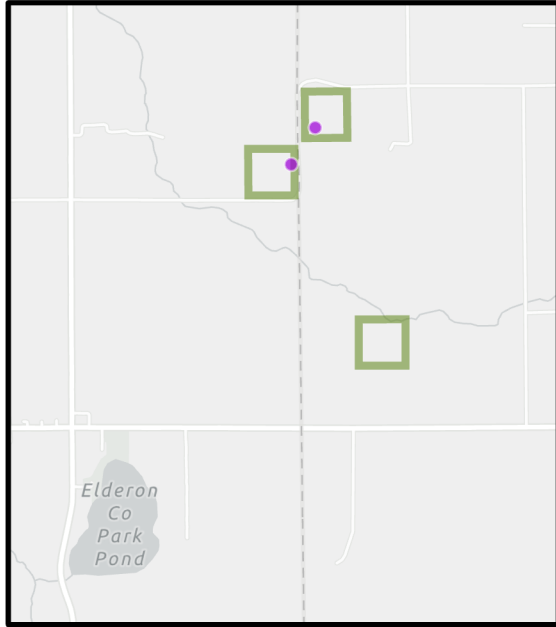
Northern Sections [2 of 2]



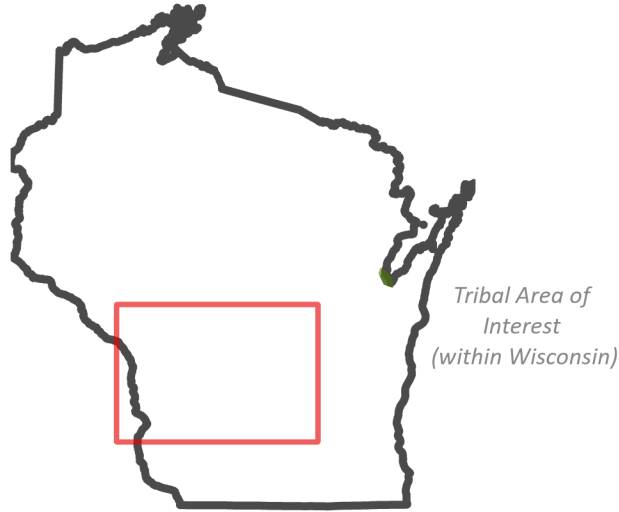
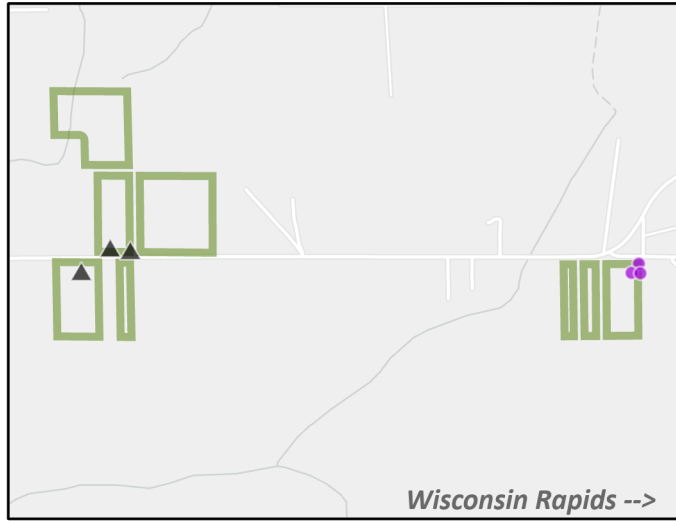
<-- New Lisbon



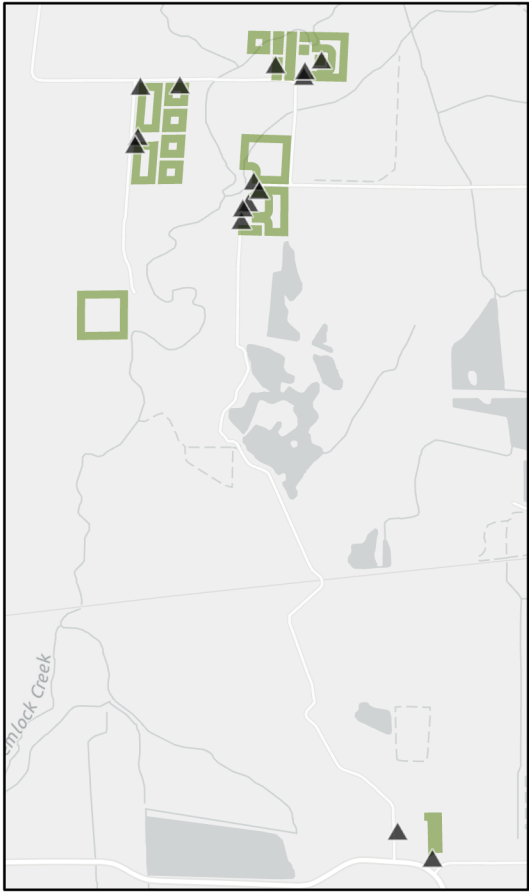
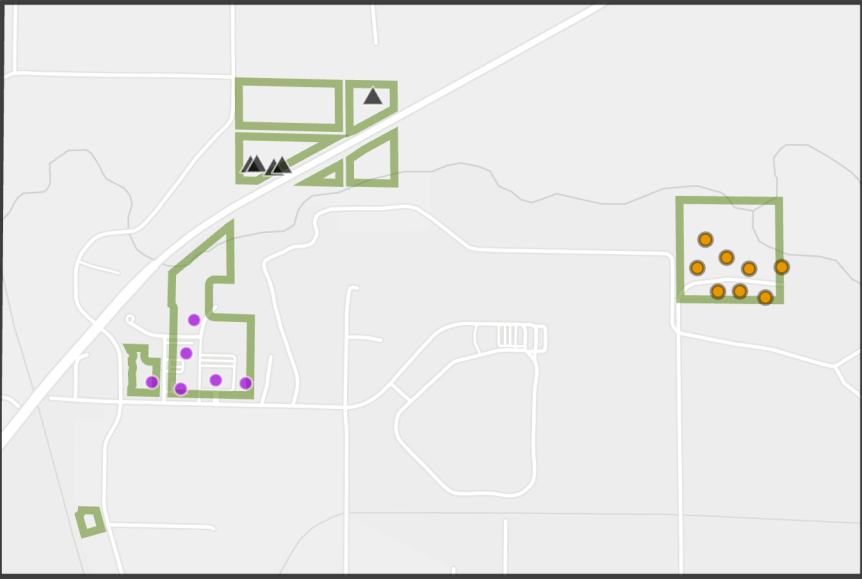
Paac Ciinak -->



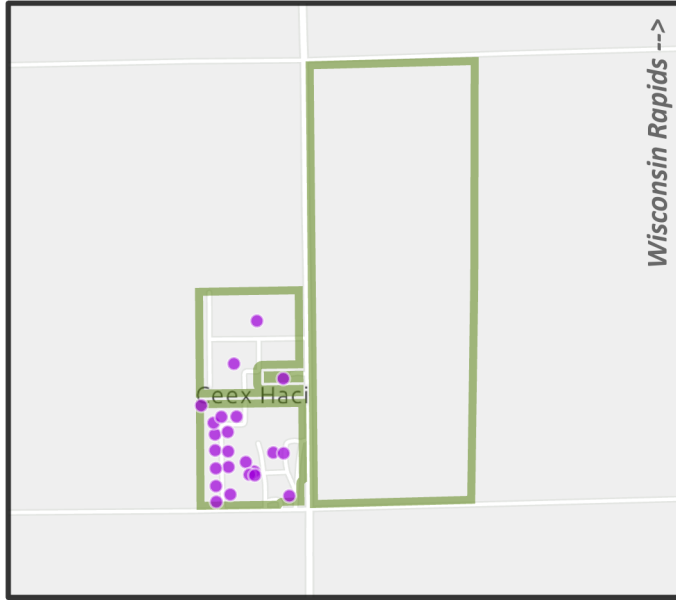
Wisconsin Rapids -->



Wisconsin Rapids -->



Wisconsin Rapids -->



BEAD Eligibility

- ▲ Ineligible - In Progress
- ▲ Other Federal Funding-Potentially BEAD eligible
- Eligible
- Ineligible - Served

Inset maps display non-contiguous multipart sections of tribal areas to display data as clearly as possible. Some parcels may be omitted.

Wisconsin Public Service Commission, Broadband Office, 2024. Data compiled by the Public Service Commission. FCC data is known to undercount locations which may need broadband service, especially on tribal lands; Location counts and related analyses are subject to change based on this data and applicable version. Please refer to the FCC National Broadband Map for further information.

Location counts are based on the FCC and NTIA Broadband Fabric and availability, version 4 [December 2023 and May 2024]. Territory designations are based on U.S. Census Bureau dataset of tribal lands. BEAD eligibility is a preliminary determination based on the BEAD Challenge Process and is pending approval by NTIA.

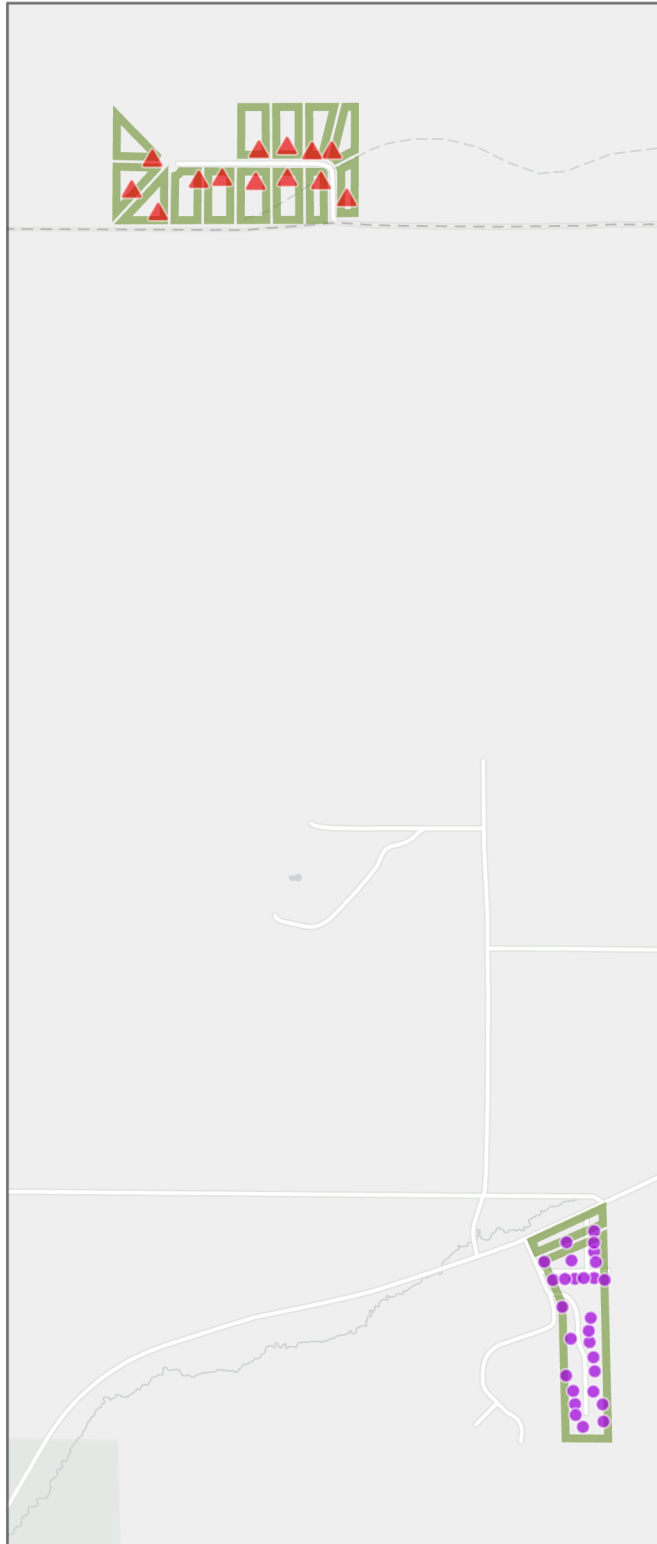


Ho-Chunk Nation

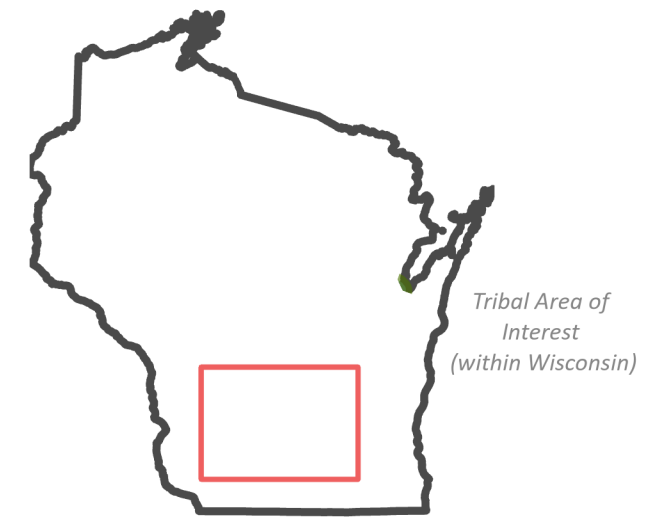
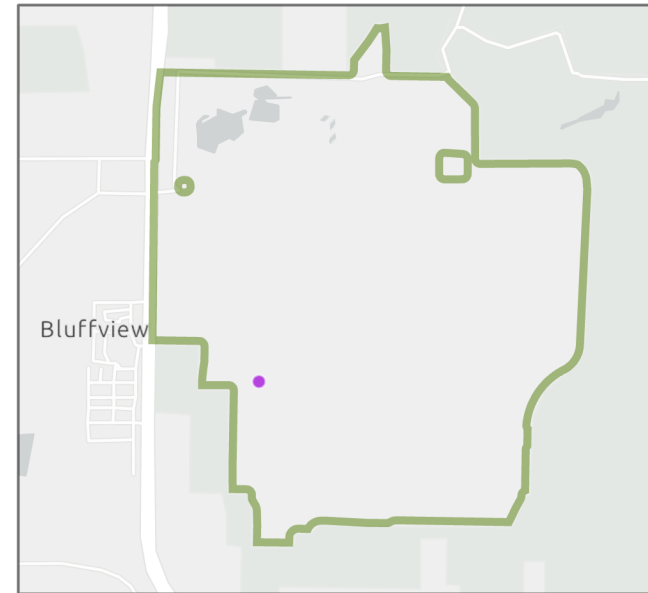
Southern Sections



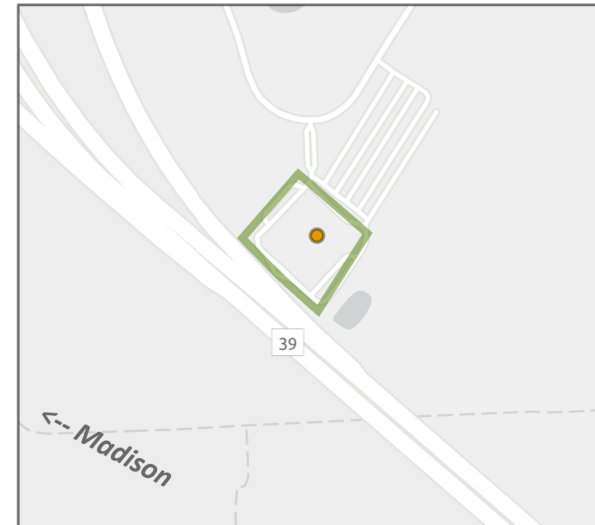
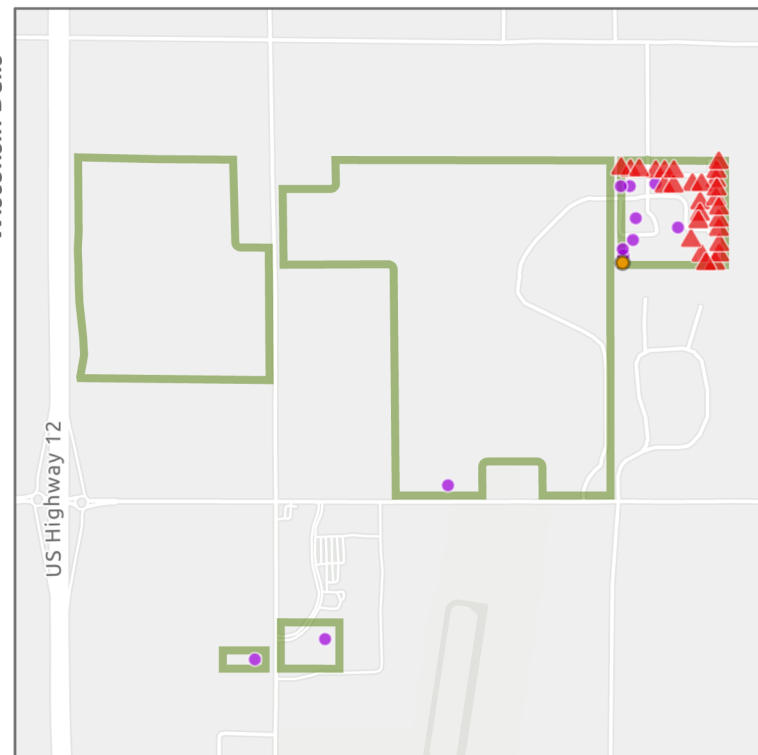
Wisconsin Dells -->



Wisconsin Dells -->



Wisconsin Dells -->



BEAD Eligibility

- ▲ Ineligible - In Progress
- ▲ Other Federal Funding-Potentially BEAD eligible
- Eligible
- Ineligible - Served

Inset maps display non-contiguous multipart sections of tribal areas to display data as clearly as possible. Some parcels may be omitted.