

Lac du Flambeau Band of Lake Superior Chippewa Summary of Broadband Equity, Access, and Deployment (BEAD) Program Eligibility and Deployment Progress

BEAD Eligible = Not Served and Not Enforceable Commitment

2,979 Total Broadband Serviceable Locations (BSLs)

2,032 Ineligible for BEAD: Served or Enforceable Commitment

596 Served (100/20 Mbps+ from wireline or licensed fixed wireless)

1,436 In progress state or federal grants, determined to be Enforceable Commitment

947 Eligible for BEAD: Not Served and Not Enforceable Commitment

947 Not served

Projects Determined to be Enforceable Commitments			
Recipient	Program	Already Served	In Progress
Cellcom	State Broadband Expansion	18	5
Lac Du Flambeau Band of Lake Superior Chippewa Indians	NTIA TBCP	488	1,369
Bug Tussel Wireless	State Broadband Expansion	23	57
Spectrum	State Broadband Expansion	0	4
Charter Fiberlink CCO, LLC - WI - Gigabit	FCC RDOF	3	19
Total		532	1,453

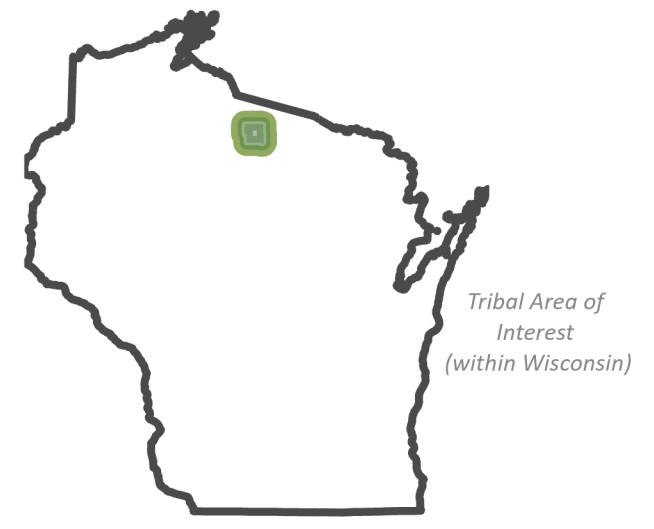
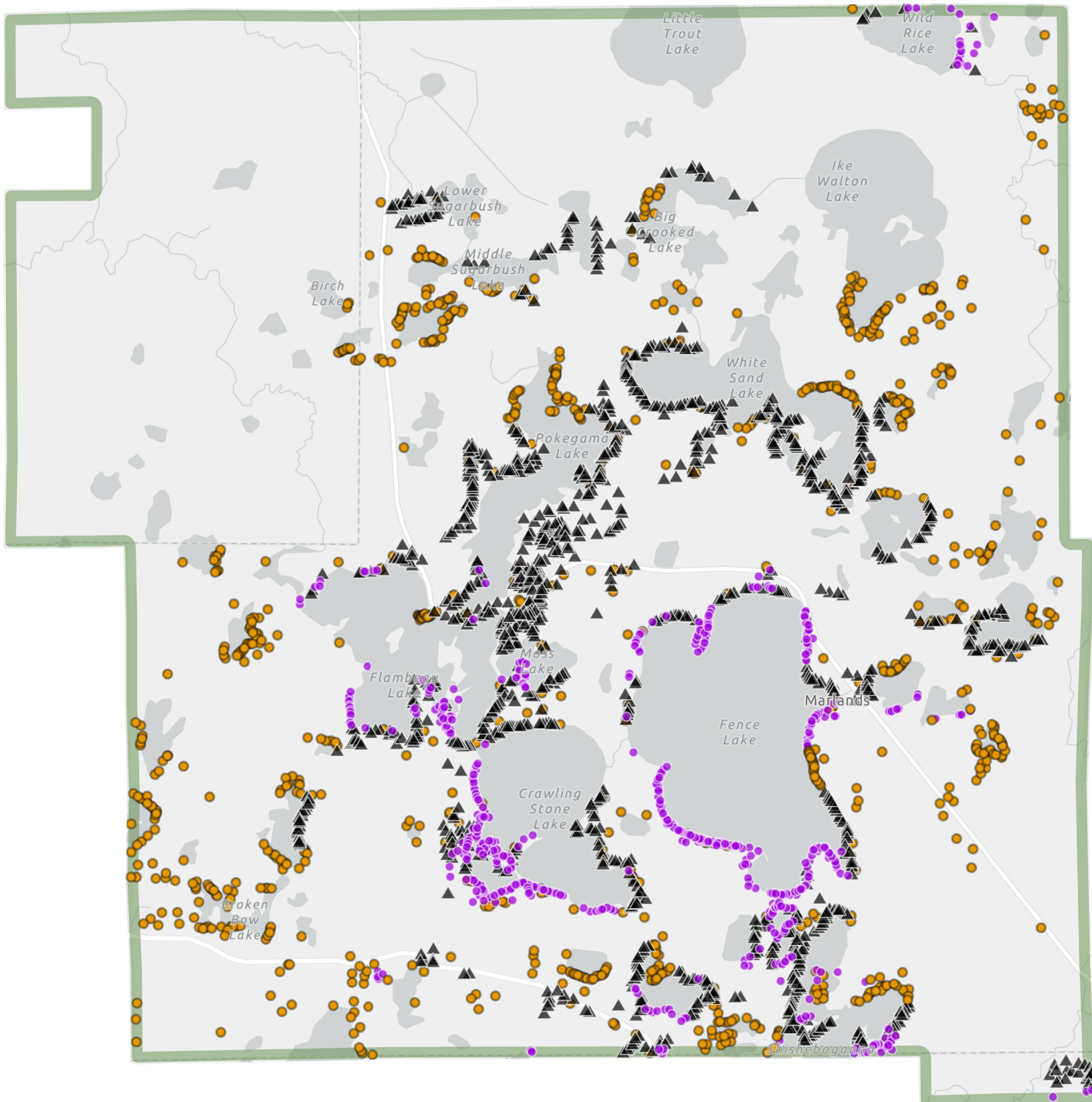
Note: In-Progress Enforceable Commitment Total may exceed In-Progress location Total due to overlapping commitments

Data Source: Federal Communications Commission (FCC) Broadband Data Collection as of December 31, 2023. Service reflects internet service provider advertised service. Disclaimer: FCC data is known to undercount locations that may need broadband service, particularly in Tribal areas.

What is a broadband serviceable location (BSL)? A business or residential location at which mass-market fixed broadband internet access service is, or can be, installed. This includes single family homes, multifamily buildings, and business locations. This does not include empty parcels of land, secondary structures on a residential parcel (such as a standalone garage or barn), or abandoned structures that are not inhabitable.



Lac du Flambeau Band of Lake Superior Chippewa



BEAD Eligibility

- ▲ Ineligible - In Progress
- ▲ Other Federal Funding-Potentially BEAD eligible
- Eligible
- Ineligible - Served

Inset maps display non-contiguous multipart sections of tribal areas to display data as clearly as possible.

Some parcels may be omitted.

Location counts are based on the FCC and NTIA Broadband Fabric and availability, version 4 [December 2023 and May 2024]. Territory designations are based on U.S. Census Bureau dataset of tribal lands. BEAD eligibility is a preliminary determination based on the BEAD Challenge Process and is pending approval by NTIA.

Wisconsin Public Service Commission, Broadband Office, 2024. Data compiled by the Public Service Commission. FCC data is known to undercount locations which may need broadband service, especially on tribal lands; Location counts and related analyses are subject to change based on this data and applicable version. Please refer to the FCC National Broadband Map for further information.