

Menominee Nation

Summary of Broadband Equity, Access, and Deployment (BEAD) Program Eligibility and Deployment Progress

BEAD Eligible = Not Served and Not Enforceable Commitment

2,447 Total Broadband Serviceable Locations (BSLs)

2,401 Ineligible for BEAD: Served or Enforceable Commitment

2,334 Served (100/20 Mbps+ from wireline or licensed fixed wireless)

67 In progress state or federal grants, determined to be Enforceable Commitment

46 Eligible for BEAD: Not Served and Not Enforceable Commitment

46 Not served

Projects Determined to be Enforceable Commitments			
Recipient	Program	Already Served	In Progress
Charter Fiberlink CCO, LLC - WI - Gigabit	FCC RDOF	10	0
Spectrum	State Broadband Expansion	131	39
Menominee Indian Tribe of Wisconsin	NTIA TBCP	82	30
Total		223	69

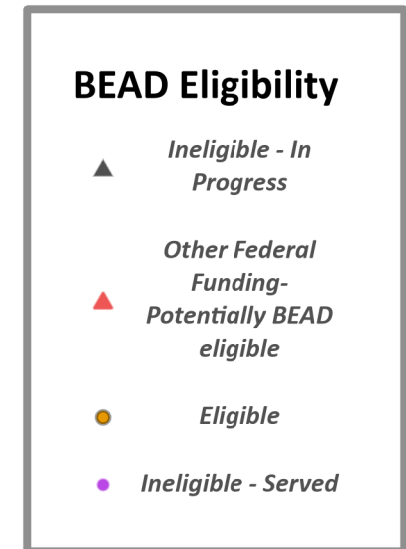
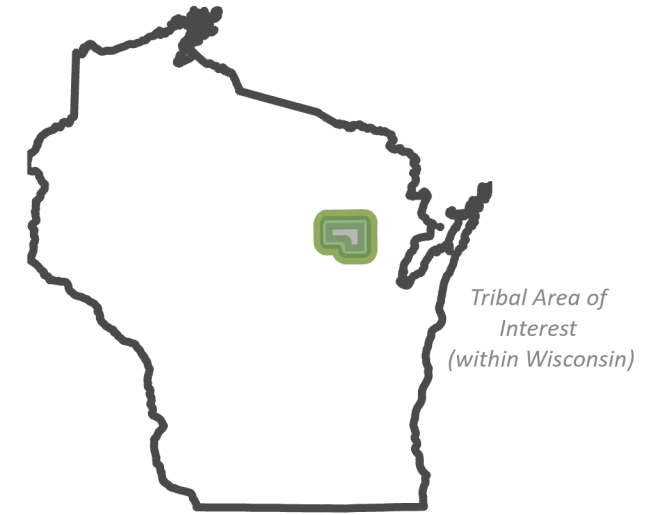
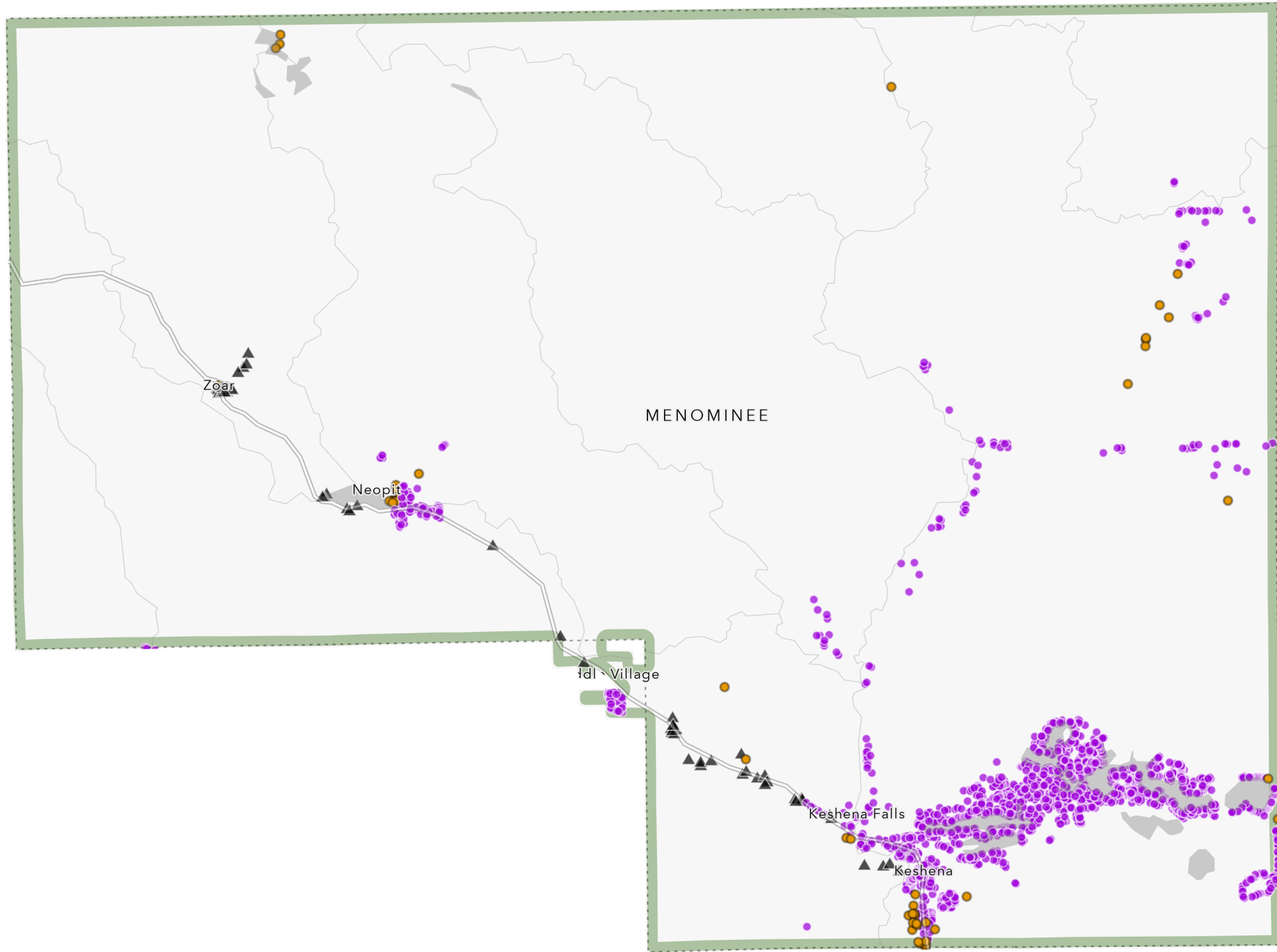
Note: In-Progress Enforceable Commitment Total may exceed In-Progress location Total due to overlapping commitments

Data Source: Federal Communications Commission (FCC) Broadband Data Collection as of December 31, 2023. Service reflects internet service provider advertised service. Disclaimer: FCC data is known to undercount locations that may need broadband service, particularly in Tribal areas.

What is a broadband serviceable location (BSL)? A business or residential location at which mass-market fixed broadband internet access service is, or can be, installed. This includes single family homes, multifamily buildings, and business locations. This does not include empty parcels of land, secondary structures on a residential parcel (such as a standalone garage or barn), or abandoned structures that are not inhabitable.



Menominee Nation



Inset maps display non-contiguous multipart sections of tribal areas to display data as clearly as possible. Some parcels may be omitted.

Location counts are based on the FCC and NTIA Broadband Fabric and availability, version 4 [December 2023 and May 2024]. Territory designations are based on U.S. Census Bureau dataset of tribal lands. BEAD eligibility is a preliminary determination based on the BEAD Challenge Process and is pending approval by NTIA.