

## St. Croix Chippewa Community

### Summary of Broadband Equity, Access, and Deployment (BEAD) Program Eligibility and Deployment Progress

BEAD Eligible = Not Served and Not Enforceable Commitment

#### 247 Total Broadband Serviceable Locations (BSLs)

#### 165 Ineligible for BEAD: Served or Enforceable Commitment

161 Served (100/20 Mbps+ from wireline or licensed fixed wireless)

4 In progress state or federal grants, determined to be Enforceable Commitment

#### 82 Eligible for BEAD: Not Served and Not Enforceable Commitment

82 Not served

Projects Determined to be Enforceable Commitments			
Recipient	Program	Already Served	In Progress
Siren Telephone Company, Inc. - WI	FCC E-ACAM	35	0
Siren Telephone Company	State Broadband Expansion	20	0
Lakeland Communications, Inc. - WI	FCC E-ACAM	63	4
St. Croix Chippewa Indians of Wisconsin	NTIA TBCP	62	4
<b>Total</b>		<b>180</b>	<b>8</b>

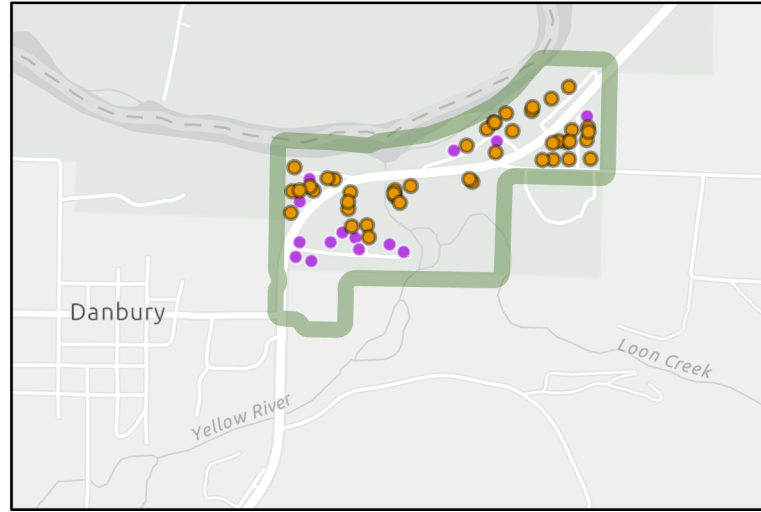
Note: In-Progress Enforceable Commitment Total may exceed In-Progress location Total due to overlapping commitments

**Data Source:** Federal Communications Commission (FCC) Broadband Data Collection as of December 31, 2023. Service reflects internet service provider advertised service. Disclaimer: FCC data is known to undercount locations that may need broadband service, particularly in Tribal areas.

**What is a broadband serviceable location (BSL)?** A business or residential location at which mass-market fixed broadband internet access service is, or can be, installed. This includes single family homes, multifamily buildings, and business locations. This does not include empty parcels of land, secondary structures on a residential parcel (such as a standalone garage or barn), or abandoned structures that are not inhabitable.



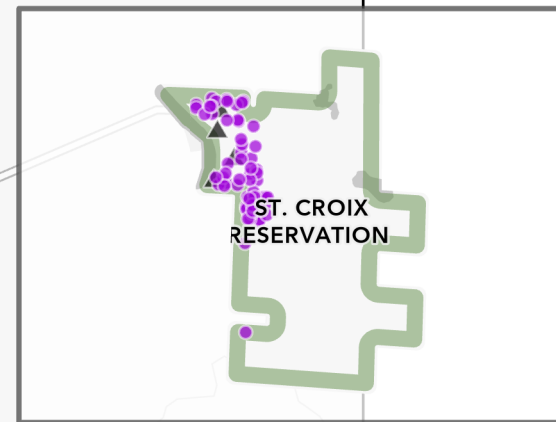
# St. Croix Chippewa Community



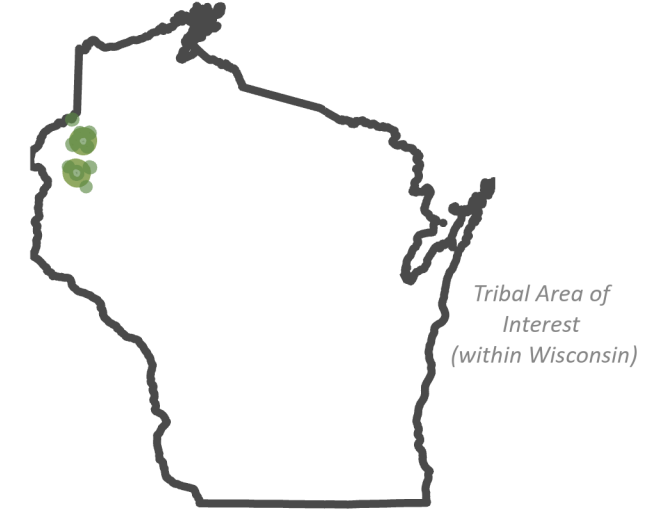
NW



South



Central



## BEAD Eligibility

- ▲ Ineligible - In Progress
- ▲ Other Federal Funding- Potentially BEAD eligible
- Eligible
- Ineligible - Served

*Inset maps display non-contiguous multipart sections of tribal areas to display data as clearly as possible. Some parcels may be omitted.*