



Increasing Economic Development through CDFIs Coalition Building Midwest Style

WIHEDC-WISCONSIN INDIGENOUS ECONOMIC DEVELOPMENT CORPORATION

Increasing Economic Development through Native CDFIs



We are a 501(c)(3) non-profit corporation, and a coalition of non-profit Native community development financial institutions (CDFIs).

Our mission is to expand Native economic development by building the financial sovereignty of Native individuals, families, Native-owned businesses, Tribal enterprises and communities in Wisconsin.



Introductions



WIHEDC is a coalition of Wisconsin's four Native CDFIs.

A nonprofit collaboration of four U.S. Department of the Treasury-certified Native American Community Development Financial Institutions (NCDFIs)

Each CDFI has a focus and expertise that they provide in technical services and loan product(s).

Our collaborations allow us to provide a much larger expansion of the types of services that we can provide, such as:

- Economic Development Trainings
- Workforce Development Trainings
- Personal Financial Services – Budgeting, Credit Understanding, Taxation, Investments
- Homebuyer Education
- Small Business Establishment and Growth to Scale
- Technical Assistance
- Financial Literacy

INTRODUCTIONS



Becky Albert Breed
Executive Director
Cedar Growth
Ho-Chunk Tribal Member



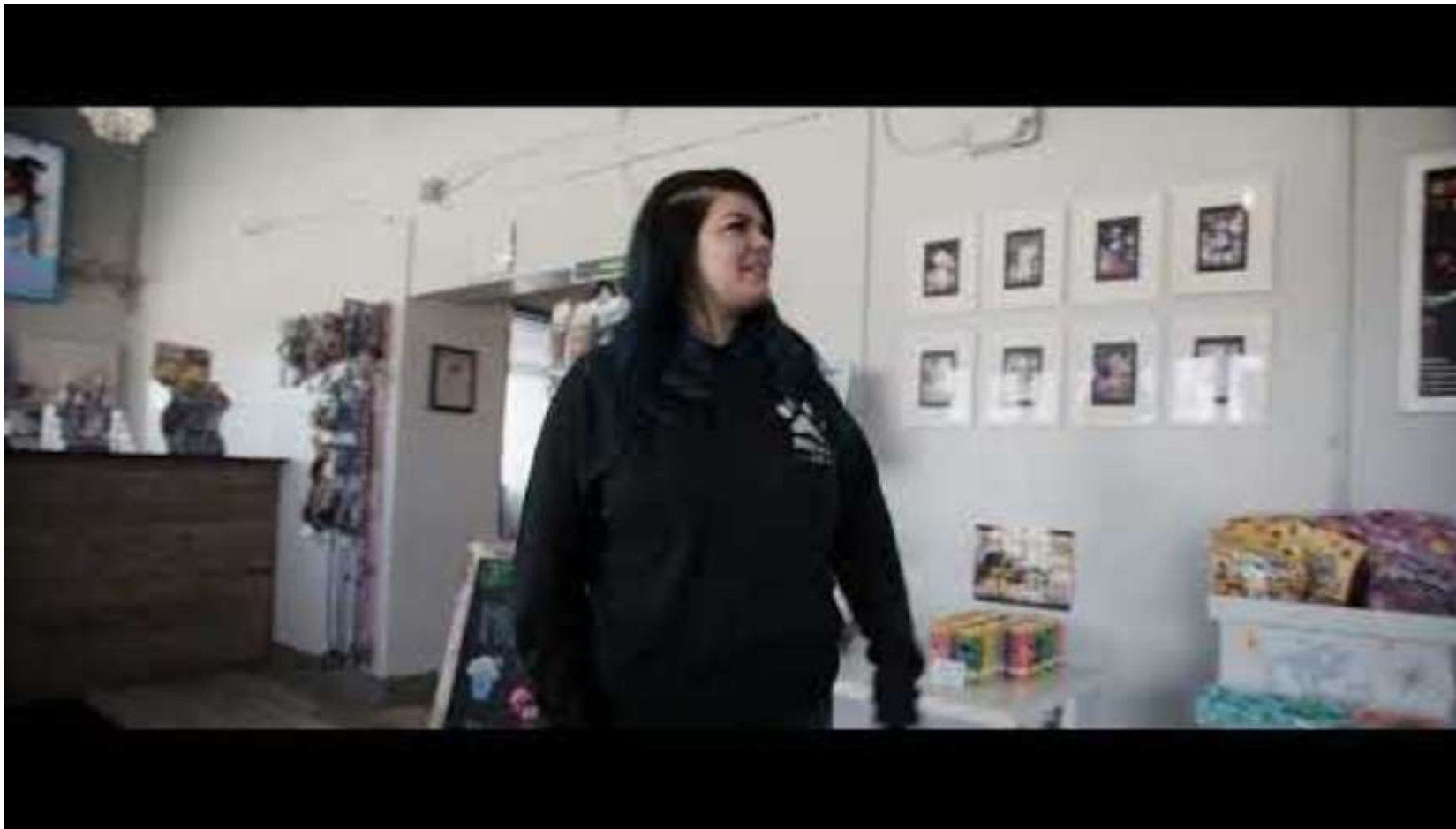
Fern Orie
Chief Executive Officer
WIHEDC
Oneida Tribal Member



Allyssa Verstoppfen
Woodland Financial
Partners
Stockbridge Munsee Tribal
Member

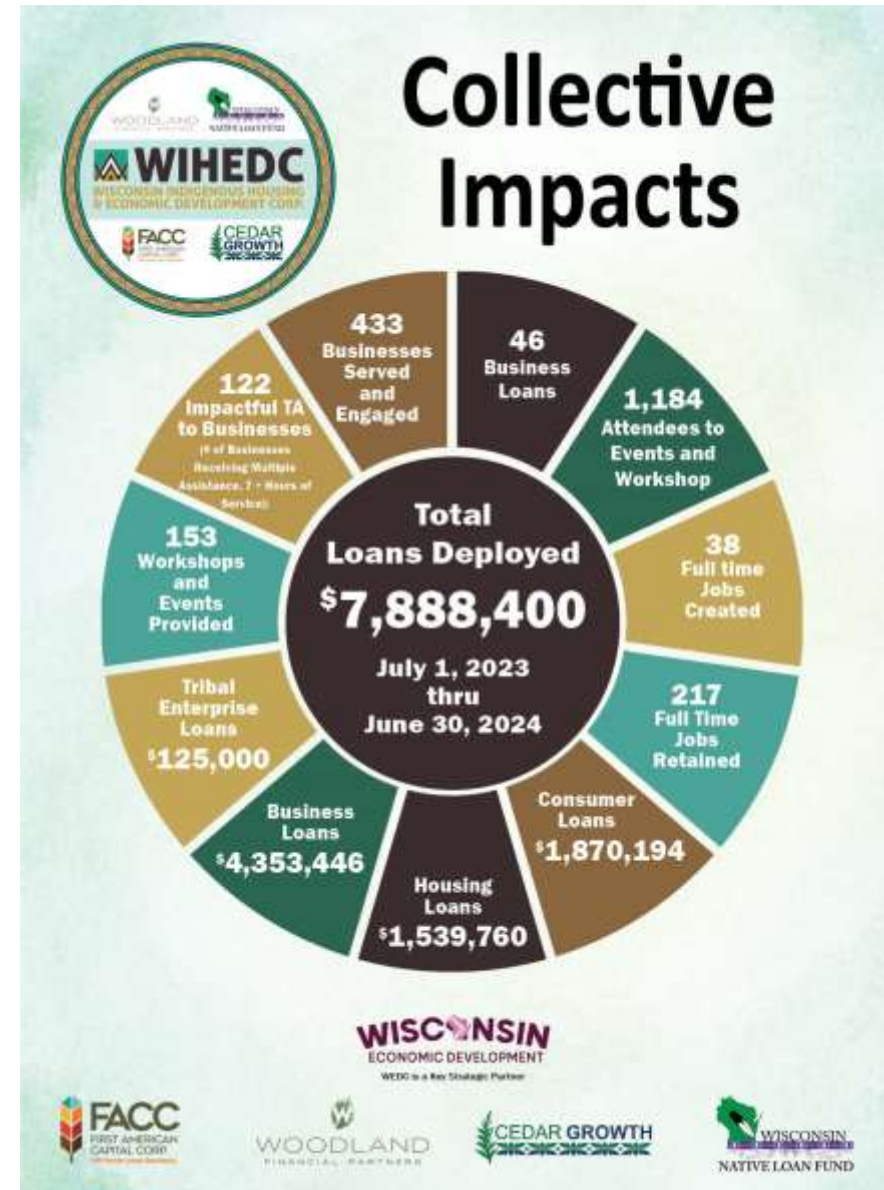


WHO WE ARE





WIHEDC	WFP	CEDAR GROWTH	FACC	Member's Continuum of Products & Services
				Business Loan Products
X	X	X		Fast Track Business Loan - less than \$10,000
X	X	X	X	Micro-Enterprise Loan - less than \$50,000
X	X	X		Small Business Loan up to \$250,000
X		X		Tribal Enterprises Loan up to \$250,000
X	X	X	X	Refinancing
				Business Development Services
X	X	X	X	Start-Up Business Development Services
X	X	X	X	Pre and Post Loan Development Services
X		X		Preparing to Qualify for a Bank Loan
X	X	X	X	Business Growth and Expansion Services
				Consumer Loans and Mortgage Services
X				Auto Loan
X	X	X		Consumer Loan
X		X		Credit Repair Loan
X				Debt Consolidation Loan
X				Down Payment Assistance Loan
		X		Family First Loan
X				Home Purchase Loan
X				Home Improvement Loan
				Consumer and Home Ownership Development Services
X		X		Consumer Credit Development Services
X	X	X		Financial Literacy Development Services
X		X		Home Ownership Development Services
X	X	X		Pre-Loan and Loan Readiness Development Services
X	X	X		Post Loan Development Services
X	X			Preparing to Qualify for a Bank Loan
X				Agricultural Loans





COLLECTIVE LOAN DEPLOYMENTS

WIHEDC Member												Other Tribal, Minority or Disadvantaged Borrowers	Total
Loans Deployed through FY 2023	\$2,188,615	\$246,785	\$12,027,909	\$1,168,641	\$8,549,558	\$4,647,892	\$5,391,286	\$1,229,736	\$212,495	\$353,901	\$123,648	\$6,241,743	\$42,382,209
2023-2024 FACC (Business)	\$23,500	\$0	\$203,000	\$955,000	\$274,172	\$29,500	\$175,750	\$0	\$0	\$290,000	\$0	\$276,534	\$2,227,45
2023-2024 Cedar Growth (Consumer)	\$5,500	\$0	\$215,539	\$21,775	\$0	\$0	\$1,000	\$1,000	\$0	\$0	\$0	\$309,266	\$554,080
2023-2024 Cedar Growth (Business)	\$17,750	\$0	\$0	\$0	\$0	\$0	\$0	\$118,871	\$10,000	\$65,000	\$0	\$17,750	\$229,371
2023-2024 WFP (Business)	\$0	\$0	\$0	\$0	\$0	\$1,104,801	\$263,642	\$0	\$0	\$0	\$0	\$0	\$1,368,443
2023-2024 WINLF (Business)	\$0	\$0	\$0	\$1,000,000	\$0	\$0	\$61,800	\$0	\$0	\$0	\$0	\$0	\$1,061,800
2023-2024 WINLF (Housing)	\$354,463	\$0	\$0	\$0	\$460,141	\$25,081	\$302,080	\$313,965	\$0	\$0	\$0	\$0	\$1,455,730
2023-2024 WINLF (Consumer)	\$117,902	\$0	\$7,712	\$64,724	\$692,414	\$84,738	\$114,715	\$168,099	\$0	\$0	\$15,710	\$32,804	\$1,298,817
Loans Deployed in FY 2024	\$519,116	\$0	\$426,251	\$2,041,499	\$1,426,728	\$1,244,120	\$918,987	\$601,935	\$10,000	\$355,000	\$15,710	\$636,353	\$8,195,697
Total Loans Deployed through FY 2024	\$2,707,731	\$246,785	\$12,454,160	\$3,210,140	\$9,976,286	\$5,892,012	\$6,310,273	\$1,831,671	\$222,495	\$708,901	\$139,358	\$6,878,096	\$50,577,906

Figures aggregated through 6/30/2024

For more information, visit wihedc.org



INNOVATING FOR IMPACT

HOW TRIBAL COMMUNITIES ARE
REIMAGINING ENTREPRENEURSHIP
FOR FUTURE GENERATIONS



Presented By:

KARL OLSON



LAC DU FLAMBEAU

WORKFORCE TRAINING CENTER

Mission: To empower individuals and entrepreneurs through tailored education, business support, and tribal values, fostering career growth, goal fulfillment, and a sense of community.



- ✓ Career training with real-world skills
- ✓ Business support for entrepreneurs
- ✓ Programs rooted in tribal culture and values





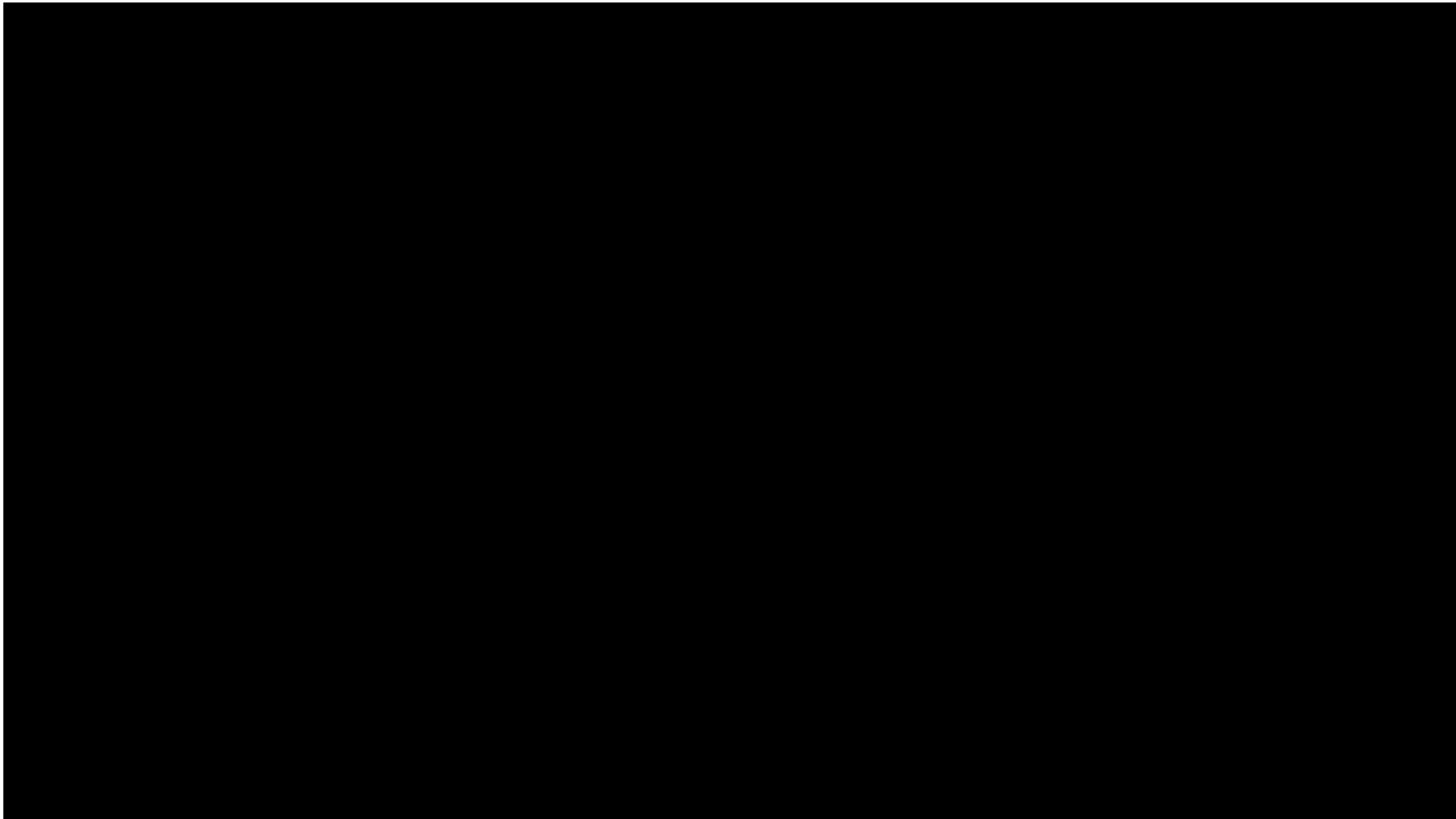
POTAWATOMI

VENTURES

B R I G H T E R T O G E T H E R

POTAWATOMI VENTURES
OVERVIEW

BRIGHTER TOGETHER



VISION

NURTURING NEW PATHS
**TO SHARED
PROSPERITY FOR
GENERATIONS**



MISSION

CULTIVATING BUSINESS VENTURES
THAT TURN OPPORTUNITY
INTO SUCCESS FOR
THE FOREST COUNTY
**POTAWATOMI
COMMUNITY**



VALUES



AT POTAWATOMI
VENTURES,
WE ARE



**AUTHENTICALLY
HUMBLE**



**BOLDLY
COURAGEOUS**



**CONSISTENTLY
RESILIENT**



**GENUINELY
KIND**



**PROFOUNDLY
VISIONARY**



POTAWATOMI VENTURES' PORTFOLIO

FEDERAL



COMMERCIAL



PASSIVES





New Portfolio Addition



POTAWATOMI
VENTURES

INDIAN COUNTRY INNOVATION CENTER:(IC)²

**BRIGHTER
TOGETHER**

